

# AUCTION CATALOGUE

THU 27 JUNE - WH CAPE TOWN



WHAUCTIONS.COM

# Guideline for the auction



**Bid on Webcast at**  
**www.whauctions.com**

Note: Your bid excludes buyers premium, Natis fee & VAT. This will be added to your bid amount when invoiced.

**Register at the auction or on [www.whauctions.com](http://www.whauctions.com) to bid online.**

Call Zelda 021 204 0599 or email [zeldat@whauctions.com](mailto:zeldat@whauctions.com) for registration forms & banking info

**AUCTION DATE: Thursday 27 June (10h30)**

**VIEW:** Wednesday 26 June (9am to 4pm)

**ADDRESS:** 17 Dacres Avenue, Epping 2, Cape Town

**TO BID:** R25,000 Refundable deposit (EFT only) & FICA Docs.  
 International bidders: R100,000 / \$8,500

**BUYERS PREMIUM:** 10% Live bidding / 12% Webcast bidding

**VAT:** 15%

**OTHER FEES:** Cash deposit fee: 2%. Natis fee per vehicle (if applicable): R2100.00 including VAT.

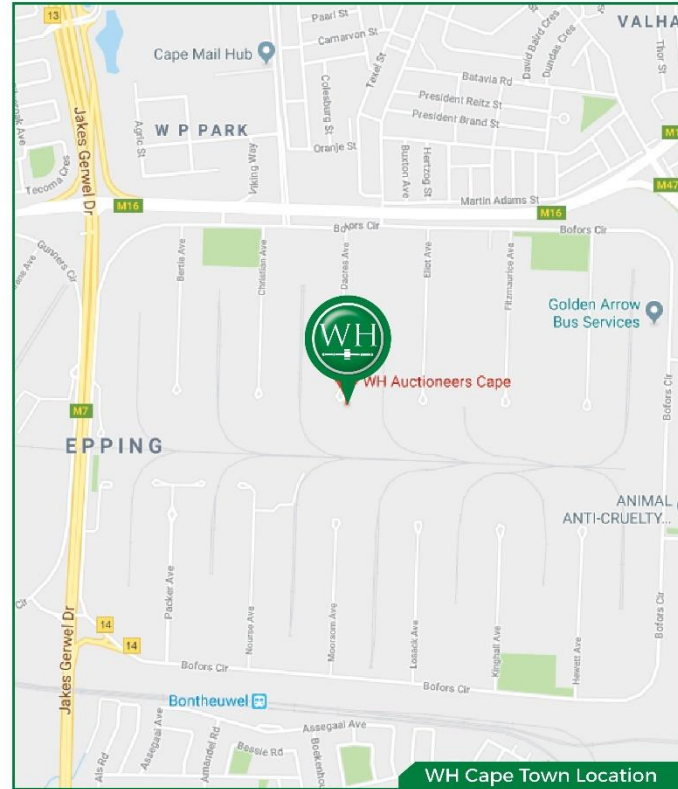
**PAYMENTS:** Invoices are issued immediately after the auction & must be settled in 24 hours.

**DISPATCH:** 7 Days after auction, excl. weekends & holidays.  
 Rigging, dismantling & safety is the buyers responsibility.

**INFO:** Graeme 084 200 6272

**REGISTRATION FORMS:** Zelda 021 204 0599 / [zeldat@whauctions.com](mailto:zeldat@whauctions.com)

**AUCTIONEER:** Martin Dibowitz 083 264 1646



**NOTICE TO BIDDERS:**

To bid, a refundable registration deposit & Fica documents will be required. Bidding will not be approved unless all necessary documents are completed. Bids exclude Buyers Premium, any applicable Fee's (such as vehicle Natis doc fees) & VAT - this will be added on your Invoice). Webcast bidders can pre-bid online as soon as you are registered.

All printed information regarding this sale is merely a guide, subject to change and neither the auction company, sellers or publishers shall be liable for any errors in this brochure. E&OE.

**Know what you're bidding on!**

Inspect goods personally before bidding. This brochure is merely a guide, contact our offices or visit our website for final auction catalogues.



**WesBank**

**PRE-APPROVED FINANCE**

**af AUCTION FINANCE**

WH has teamed up with **AuctionFinance** to provide bidders with pre-approved bank finance on qualifying lots. Call now for tailored finance deals.

**Mathilda 082 337 2210**





<b>1</b>	<b>2.8 kva Generator</b>  Quantity Available: 2
<b>2</b>	<b>2.8 Kva Generator</b>
<b>3</b>	<b>3.5 Kva Generator</b>
<b>4</b>	<b>3. 5 Kva Generator</b>
<b>5</b>	<b>5 Kva Generator</b>
<b>6</b>	<b>Motoline 3 Phase 5.5kw Pump</b>  Quantity Available: 2
<b>7</b>	<b>Tile Cutter</b>
<b>8</b>	<b>New Desk Mover DM270</b>  Quantity Available: 4
<b>9</b>	<b>Man Steel Drum Dollies SD30</b>  Quantity Available: 7
<b>10</b>	<b>Manhand Electric Lift Table ETF100D</b>

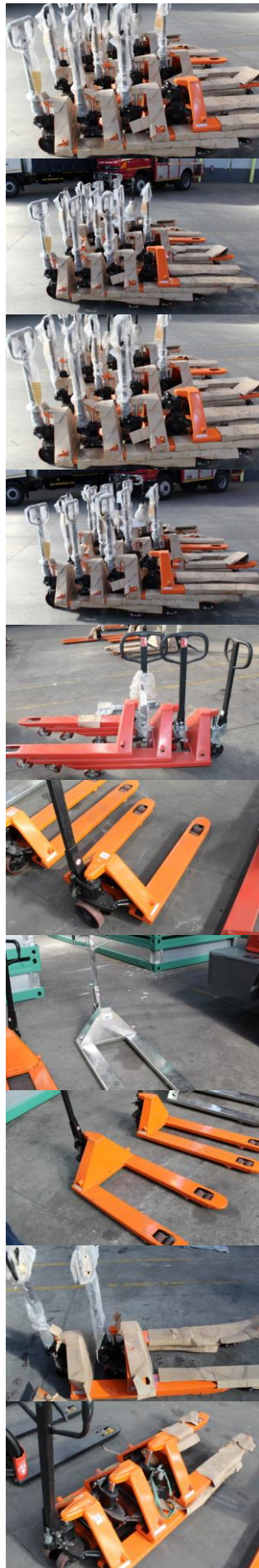


<b>11</b>	<b>500 KG Manhand Lift Table TF50</b>
<b>12</b>	<b>Manhand 500KG Lift Table TF50</b>  Quantity Available: 4
<b>13</b>	<b>Manhand Single Drum Grabber 16TA40366</b>  Quantity Available: 6
<b>14</b>	<b>Manhand 1.4T Drum Grabber 16TA40369</b>
<b>15</b>	<b>Manhand Double Drum Grabber 16TA40367</b>  Quantity Available: 4
<b>16</b>	<b>Manhand 1T Pallet Truck HL 550 x 1150mm PT006</b>  Quantity Available: 3
<b>17</b>	<b>1.0 T Manhand Pallet Truck HL 550 x 1150mm PT006</b>
<b>18</b>	<b>Manhand 1.5T Pallet Truck PL 550 x 1150mm PT008</b>  Quantity Available: 2
<b>19</b>	<b>1.5 T Manhand Pallet Truck LP 550 x 1150mm PT008</b>  Quantity Available: 5
<b>20</b>	<b>1.5 T Manhand Pallet Truck LP 680 x 1200mm PT007</b>  Quantity Available: 9





<b>21</b>	<b>Manhand 2.5T Pallet Truck STD</b> 520 x 1000mm PT004  Quantity Available: 5
<b>22</b>	<b>Manhand 2.5T Pallet Truck STD</b> 550 x 1000mm PT0014  Quantity Available: 12
<b>23</b>	<b>Manhand 2.5T Pallet Truck</b> 680 x 1200mm PT001NYLON  Quantity Available: 11
<b>24</b>	<b>Manhand 2.5T Pallet Truck STD</b> 680 x 1000mm PT002  Quantity Available: 15
<b>25</b>	<b>Manhand 2.5 Pallet Truck 685</b> EPD25  Quantity Available: 3
<b>26</b>	<b>2.5 T Manhand Pallet Truck STD</b> 680 x 1000 PT002
<b>27</b>	<b>2.5 T Manhand Pallet Truck SS 680</b> x 1200mm PT001SS
<b>28</b>	<b>2.5 T Manhand Pallet Truck STD</b> 520 x 1200mm PT009
<b>29</b>	<b>Manhand 3.5T Pallet Truck HD 6</b> PT015  Quantity Available: 2
<b>30</b>	<b>3.5 T Manhand Pallet Truck HD 6</b> PT015



<b>31</b>	<b>Manhand 1.2T Electric Pallet T</b> EPT12-EZ
<b>32</b>	<b>Manhand 1T Electric Stacker 3</b> ES10-22DM-3.3M  Quantity Available: 12
<b>33</b>	<b>Manhand 1T Manual Stacker 1.6M</b> MSA1000-1.6M  Quantity Available: 2
<b>34</b>	<b>1.5 T Manhand Manual Stacker</b> 1.6 M MSA 1500-1.6
<b>35</b>	<b>Manhand 1.6T Manual Stacker 1</b> SDJAS1000
<b>36</b>	<b>Manhand Drum Stacker</b> YMSS00
<b>37</b>	<b>350 KG Manhand Drum Stacker</b> YTD-35
<b>38</b>	<b>Manhand 1.2T Electric Stacker</b> ES12-25DM (3.3M)  Quantity Available: 5
<b>39</b>	<b>1 T Manhand Electric Tow Tractor</b> QDD10
<b>40</b>	<b>Manhand 1.5T Pedestrian Electric</b> ES15-33DM  Quantity Available: 2





<b>41</b>	<b>1.5 T Manhand Electric Counter</b> ES15-15CS
<b>42</b>	<b>Manhand 1T Electric Stacker 3</b> ES10-10ES (3.3m)  Quantity Available: 2
<b>43</b>	<b>Manhand 2T Electric Ride on PA</b> EPT20-20RAS  Quantity Available: 2
<b>44</b>	<b>Manhand 1.4T Electric Stacker</b> ES14-14RA-FO (3.3M)
<b>45</b>	<b>1.4 T Manhand Electric Stacker</b> ES14-30RA (4.5M)
<b>46</b>	<b>Manhand 1.4T Electric Stacker</b> ES14-30RA (4.5M)
<b>47</b>	<b>Manhand 1.5T Semi Electric STA</b> CTD15B-III  Quantity Available: 3
<b>49</b>	<b>1.5 Ton Manhand Semi Electric Stacker</b> CTD15B-III  Quantity Available: 3
<b>49a</b>	<b>Manhand 1.5T Electric Counter</b> ES15-15CS (4.5M)
<b>50</b>	<b>1.5 T Manhand Electric Pallet Truck with Side Loading</b> EPT20-15ET(1)



<b>51</b>	<b>Saker 7 Ton Forklift</b> 606205001 VIN: 04P110130J3002708 Serial No.: 511010389201806032
<b>52</b>	<b>Manhand 4.5T Perkins 1104D 4M</b> Diesel Forklift 2 Stage Mast (Demo) CPCD45N-RW35 (2)
<b>53</b>	<b>Manhand 3.5T A498BT1 4.8M</b> Diesel Forklift 3 Stage Mast CPCD35N-RW27(2)
<b>54</b> <b>55</b>	<b>Hyster-Yale Maximal FD30T-M3G(1)3</b> 3m Duplex mast 1070mm Forks Electric shift transmission  Quantity Available: 2
<b>56</b>	<b>Manhand 1.8T Electric 3M</b> 2 Stage Mast CPD18-AC4
<b>57</b>	<b>Manhand 1.8T Electric 4.8M</b> Forklift 3 Stage Mast CPD18-AC4 (2)
<b>58</b> <b>59</b>	<b>Totem AF300-J 3 Ton Articulated Forklift</b>  Quantity Available: 2
<b>60</b>	<b>Totem AP218- J Articulate Wheel Loader With Bucket and Fork Attachments</b> VIN: 18NYJW762
<b>61</b>	<b>2018 Escorts EC-2420 Roller</b> VIN: ECE03465CJ0007521 Engine: 4H.328/1820032
<b>62</b>	<b>Escorts EC3664 3 Ton Ride-on Roller</b> VIN: ECE03421KJ0006713 Engine: 03.3502/1820003





<b>63</b>	<b>Unused Zoomlion RK754 Tractor</b> With Roll Over Protection 55Kw Engine Serial Number: ZLRKR50579PH **NO NATIS**
<b>64</b>	<b>2012 Broce RCT-350 Enclosed Broom</b> Hours: 3285 VIN: 407957
<b>65</b>	<b>Caterpillar 305CR Excavator</b> Hours: 539 VIN: CAT00305JDGT01234
<b>66</b>	<b>GB Power GBT-4000 Lighting Tower</b> Diesel Engine 11Kva Standby Power 4 x LED Lights SmartGen Control Panel Serial No.: GB380A/10/12KW
<b>67</b>	<b>CFG18093 Wacker Light Tower Box Body</b> Custom Built ERA VIN: AA9T17500JHEX2336
<b>68</b>	<b>Ollivett D Copia MFP 3514 Multi Function Copier</b>  Quantity Available: 3
<b>69</b>	<b>Toshiba E Studio 357 MPF Photocopier</b>
<b>70</b>	<b>2007 Raemor Trading Flat Deck Trailer</b> VIN: AF9B234BM7PJT1021
<b>71</b>	<b>2010 CY66052 Nissan Hardbody 2.5 TDI LWB</b> VIN: ADNK030000A002475 Engine: YD25220125T Color: White
<b>72</b>	<b>2013 CJ21BGGP Isuzu KB250D LDV</b> Kilometers: 348568 VIN: ADM2RS54AA4615598 Engine: 4JA1256422 Color: White



<b>73</b>	<b>2010 CY37977 Nissan NP200 1.6 Bakkie</b> Kilometers: 205241 VIN: ADNUSN1D5U0009327 Engine: K7MF710UE38373 Color: White
<b>74</b>	<b>2016 FF96SMGP Ford Ranger 2.2TDCI S/C</b> With Tool Box Canopy Kilometers: 48970 VIN: AFANXXMJ2NGA54768 Engine: PF2KNGA54768 Color: White
<b>75</b>	<b>2017 CY174539 Mercedes Benz GLA200</b> Kilometers: 47348 VIN: WDC1569432J350337 Engine: 27091031213325 Color: White Asset No.: 909564
<b>76</b>	<b>2011 Audi R8 V10 Spider Convertable</b> Kilometers: 73733 VIN: WUAZZZ428AN002681 Color: Silver
<b>77</b>	<b>2015 CF212912 Toyota Rav 4 SUV</b> Kilometers: 26727 VIN: JTMZD3EV10D055258 Engine: 3ZR6345825 Color: White
<b>78</b>	<b>2015 CA 983436 Nissan NP200 1.6 LDV</b> With Canopy Kilometers: 117280 VIN: ADNUSN1D5U0087757 Engine: K7MF710UJ26318 Color: White
<b>79</b>	<b>2006 BMW 650I Convertable</b> Kilometers: 170877 VIN: WBAEK12060B865799 Engine: 51763831 Color: Gold
<b>80</b>	<b>2010 CY66048 Nissan Hardbody 2.5TDI NP300 LWB</b> With Tool Box Canopy Kilometers: 150413 VIN: ADNK030000A002462 Engine: YD25223359T Color: White
<b>81</b>	<b>2013 CY332658W Ford Bantam 1.3 LDV</b> Kilometers: 183397 VIN: AFAWXXMJKWB115612 Engine: AL022806 Color: White
<b>82</b>	<b>2017 CA899491 Toyota Corolla 1.6 Auto</b> Kilometers: 12782 VIN: AHTBBOJEX00020627 Engine: 1ZR591852





**83** **2010 CA232724 Toyota Hilux 2L VVTI LWB**  
With Canopy  
Kilometers: 463529  
VIN: AHTCW12G804031343  
Engine: 1TR8256922  
Color: White

**84** **2013 CY176613 Mercedes Benz C180**  
Kilometers: 179908  
VIN: WDD2040312R316243  
Engine: 27491030093040  
Color: Red

**85** **2018 CF180375 Ford Ranger 2.2XL 6 Speed S/C**  
Kilometers: 86235  
VIN: AFANXXMJ2NHHK25976  
Engine: QJ2LNHK25976  
Color: White

**86** **2010 CA232201 Toyota Hilux VVT LWB**  
With Canopy  
Kilometers: 369036  
VIN: AHTCW12G804030371  
Engine: 1TR8247285  
Color: White

**87** **2009 ND170870 BMW 330i Convertable**  
Kilometers: 118807  
VIN: WBAWL52000PX33519  
Engine: 74524486  
Color: White

**88** **2013 CY314903 Nissan NP200 1.6 LDV**  
With Canopy  
Kilometers: 226850  
VIN: ADNUSN1D5U0064937  
Engine: K7MF710UH62028  
Color: White

**89** **2016 CF155647 Toyota Hilux 2.5D4D LWB**  
Kilometers: 140054  
VIN: AHTCS12GX07637981  
Engine: 2KDA888449  
Color: White

**90** **2012 CFM25808 Hyundai I20 1.4 Hatch Back**  
Kilometers: 102027  
VIN: MALBB51CLBM332763  
Engine: G4FABW327831  
Color: White

**91** **2018 CF179879 Ford Ranger 2.2XL 6 Speed S/C**  
Kilometers: 89438  
VIN: AFANXXMJ2NHD42732  
Engine: QJ2LNHD42732  
Color: White

**92** **2011 CA979287 Aston Martin DB9 Convertable**  
Kilometers: 17778  
VIN: SCFFCABE6BGB13210  
Engine: AM0929086  
Color: Black



**93** **2014 Yamaha YZ 450 F Scrambler**  
Non Runner

**94** **2001 CA373359 Nissan UD Cabstar 3.5 Dropside**  
Kilometers: 255022  
VIN: ADN552000000001185  
Color: White

**95** **2007 VNJ053GP Isuzu FTR800 Dropside**  
Kilometers: 310837  
VIN: ADMFTR33M6Z356876  
Engine: 6HH1418585  
Color: White

**96** **2004 DCN644EC Mercedes-Benz 1517 Atego 8T Dropside Truck**  
Kilometers: 251593.2  
VIN: WDB9700786K899026  
Engine: 90491100371153

**97** **2004 DRC891EC Mercedes-Benz 1517 Atego 8T Dropside Truck**  
Kilometers: 210540  
VIN: WDB9700786K899030  
Engine: 90491100371151

**98** **2004 DDC215EC Mercedes-Benz 1517 Atego 8T Dropside Truck**  
Kilometers: 227850  
VIN: WDB9700786K895307  
Engine: 90491100369706

**99** **2013 HDC096EC Hino 500 Super F Cattle Truck**  
Kilometers: 469031  
VIN: AHFFG1JPPXX22947  
Engine: JO8CTT48537

**100** **1991 PYB283GP Toyota Hino Roll Back**  
Kilometers: 934030  
VIN: FGA27010550  
Engine: MK02034SA101174C  
Color: White

**101** **2005 CF252896 Toyota Dyna 150**  
Kilometers: 293845  
VIN: JTF AF34Y409010697  
Engine: 5L5612403  
Color: White

**102** **2006 JBJ337EC UD UD90 Fridge Truck**  
Kilometers: 303444  
VIN: ADDT5500000004716  
Engine: FE6221210C





<b>103</b>	<b>2006 FPX886EC Nissan UD80 Fridge Truck</b> Kilometers: 293239 VIN: ADDT530000004305 Engine: FE6207710B Color: White
<b>104</b>	<b>2003 CZV339EC Mercedes-Benz Atego 8T 1517 Volume Truck</b> Kilometers: 256947.1 VIN: WDB9700786K840032 Engine: 90491100317347
<b>105</b>	<b>2004 DDT477EC Mercedes-Benz 1517 Atego 8T Volume Truck With Tail Lift</b> Kilometers: 332132.2 VIN: WDB9700786K895138 Engine: 90491100368467
<b>106</b>	<b>2005 SRW089GP Hino 15.257 Tautliner</b> Kilometers: 311787 VIN: AHHFG1JPP00013650 Engine: J08CTT20665
<b>107</b>	<b>2010 FJW256EC Hino 500 15.258 4x4 Fire Truck</b> Kilometers: 37704 VIN: AHHGT1JKPXXX12007 Engine: J08CUL11497 Color: Red
<b>108</b>	<b>2006 Hyundai HL760-7 Front End Loader</b> Non Runner Engine Partly Stripped No Gear Box Vin: 1C110542 Engine: 207/152/2200
<b>109</b>	<b>2014 Hyundai 220LC-95H Excavator</b> Right Side Track Has Been Removed, Parts Missing From Under Carriage. Hours: 6937.8 Vin: HHKHZ615J0002681 Engine: D6BVD077436
<b>110</b>	<b>Assorted Cement Buckets</b>
<b>111</b>	<b>Steel Skips</b> Plastic and Paper Bins  Quantity Available: 4
<b>112</b>	<b>Turner Morris Site Conveyor 9M</b>



<b>114</b>	<b>2004 CCC7939 Kearneys Truck &amp; Trailer 25m3 Tipper</b> VIN: AA9A340MA4RKR1637
<b>115</b>	<b>2010 CAW75010 Freightliner CISX-530 Truck Tractor</b> Kilometers: 1127522 VIN: 1FUJAWBG88LAY9246 Engine: 79449285 Color: White
<b>116</b>	<b>1999 CAW83122 Henred Fruehauf 12M Tri Axle Flat De Trailer</b> VIN: H101356
<b>117</b>	<b>2015 CF177731 Iveco Trakker 440 6X4 Truck Tractor</b> Non Runner VIN: WJMS2NSS50C302785 Engine: F3BEE681CB111232387
<b>118</b>	<b>2017 CF233607 Iveco Trakker 440 6X4 Truck Tractor</b> Kilometers: 74742 VIN: AANE2NSL00K000328 Engine: F3BEE681EA111239390
<b>119</b>	<b>2015 CF193172 Mercedes Benz Axor 3340S/33 6X4 Truck</b> Kilometers: 160866 VIN: WDB9441616L932760 Engine: 457962C0311022 Color: White Asset No.: 873923
<b>120</b>	<b>2016 CF238544 Mercedes Benz Axor 3535K/51 Tipper 12m3</b> Kilometers: 152383 VIN: WDB94230760041699 Engine: 457956C0312611 Color: White Asset No.: 874953
<b>121</b>	<b>2014 CF142008 Mercedes Benz Axor 2628B/33 Tipper</b> Kilometers: 304181 VIN: WDB9536416L340093 Engine: 906926C1067034 Color: White
<b>121</b>	<b>2015 CF212298 Iveco Trakker 380 Tipper 10M3</b> Kilometers: 193677 VIN: WJME3TRS40C291666 Engine: F3BEE681GB201226083



**End of auction – thank you for participating.**