

AUCTION CATALOGUE

AVAVENG
GRINAKE-LTA

Disposal of non-core assets

WED 11 SEP AT 1 JURGENS STREET, JETPARK

NOTE! AUCTION STARTS AT 10H00



WHAUCTIONS.COM

Guideline for the auction



BID LIVE OR ON WEBCAST
whauctions.com

Note: Your bid excludes buyers premium, Natis fee & VAT. This will be added to your bid amount when invoiced.

Register at the auction or on www.whauctions.com to bid online.

Call **011 574 5700** or email info@whauctions.com for registration forms & banking info

Aveng Grinaker-LTA Live & Webcast Auction

WED 11 SEPTEMBER (10H00)

Aveng Park - 1 Jurgens Street, Boksburg

VIEW: Mon 9 & Tue 10 September
CONTACT: Shannon 084 520 5000
Vicki 084 323 5000
Wihan 084 253 5000
Office 011 574 5700



5km / 7min from OR Tambo Airport.

NEARBY ACCOMODATION

Emperors Palace - 011 928 1000

TO BID: R50,000 Refundable deposit (EFT only) & FICA Docs.
International bidders: R100,000 / \$8500)

BUYERS PREMIUM: 10% if bidding live / 12% if bidding via Webcast

VAT: 15%

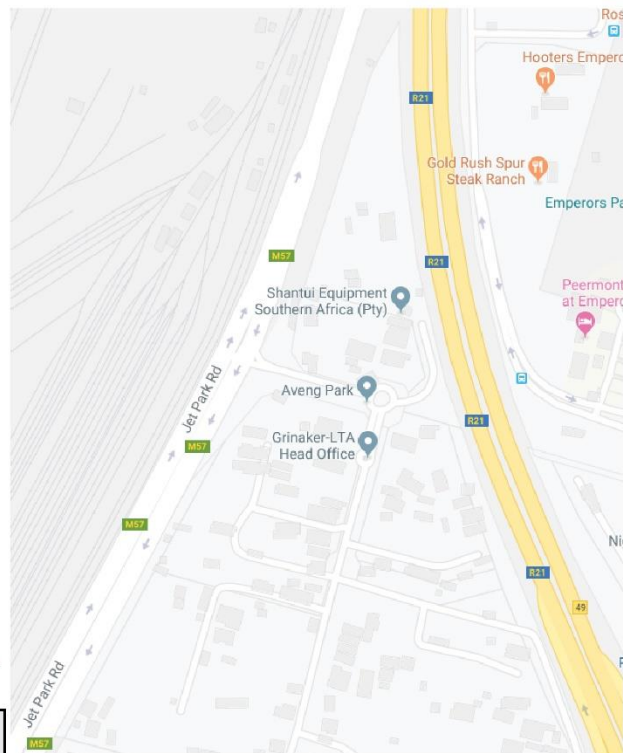
OTHER FEES: Natis fee per vehicle: R2100.00 including VAT.

PAYMENTS: Invoices are issued immediately after the auction & must be settled in 24 hours. by EFT. Cash is not accepted. An admin fee of 2% will be levied on cash deposits made into our account.

DISPATCH: 7 Days after auction, excl. weekends & holidays.
Rigging, dismantling & safety is the buyers responsibility.

REGISTRATION HELP: 011 574 5700 / info@whauctions.com

AUCTIONEERS: Shannon Winterstein
Mathew Henderson



NOTICE TO BIDDERS:

To bid, a refundable registration deposit & Fica documents will be required. Bidding will not be approved unless all necessary documents are completed. Bids exclude Buyers Premium & any applicable Fee's (such as vehicle Natis doc fees) & VAT - this will be added on your Invoice. Webcast bidders can pre-bid online as soon as you are registered.

Our rules of auction comply with section 45 of the Consumer Protection Act, Act 68 of 2008.

All printed information regarding this sale is merely a guide, subject to change and neither the auction company, sellers or publishers shall be liable for any errors in this brochure.

KNOW WHAT YOUR'RE BIDDING ON!

This catalogue is merely a guide, you are encouraged to inspect goods before bidding. We / the sellers do not verify hour / meter readings. Goods are sold as-is with no duty to repair. E&OE.



Bank finance

Anton : 083 790 0090



Transport

Rob : 011 609 3005



















Cargo freight & clearance

Kumarie : 061 734 7394

The auctioneers are not responsible for any errors or discrepancies in descriptions.
All goods sold as-is - no duty to repair. Odometers & hour readings not verified. E&OE.



<p>1</p>	<p>12m Steel Container PC012041 **Containers are sold without contents and contents will be removed on collection** Booking for collection required.</p>		<p>9</p>	<p>12m Steel Container - 4 Office PC012003 **Containers are sold without contents and contents will be removed on collection** Booking for collection required.</p>	
<p>2</p>	<p>12m Steel Container CO0210/9807 **Containers are sold without contents and contents will be removed on collection** Booking for collection required.</p>		<p>10</p>	<p>12m Steel Container Ablution PC012028 **Containers are sold without contents and contents will be removed on collection** Booking for collection required.</p>	
<p>3</p>	<p>12m Steel Container PC012060 **Containers are sold without contents and contents will be removed on collection** Booking for collection required.</p>		<p>11</p>	<p>12m Steel Container Ablution PC012111 **Containers are sold without contents and contents will be removed on collection** Booking for collection required.</p>	
<p>4</p>	<p>12m Steel Container PC012019 **Containers are sold without contents and contents will be removed on collection** Booking for collection required.</p>		<p>14</p>	<p>12m Portacamp 4opc/2000/309 **Containers are sold without contents and contents will be removed on collection** Booking for collection required.</p>	
<p>5</p>	<p>12m Steel Container PC012066 **Containers are sold without contents and contents will be removed on collection** Booking for collection required.</p>		<p>15</p>	<p>12m Portacamp PH012006 **Containers are sold without contents and contents will be removed on collection** Booking for collection required.</p>	
<p>6</p>	<p>12m Steel Container PC012118 **Containers are sold without contents and contents will be removed on collection** Booking for collection required.</p>		<p>16</p>	<p>12m Portacamp PH012024 **Containers are sold without contents and contents will be removed on collection** Booking for collection required.</p>	
<p>7</p>	<p>12m Steel Container - Store PC0012112 **Containers are sold without contents and contents will be removed on collection** Booking for collection required.</p>		<p>17</p>	<p>9m Portacamp Office 102015P **Containers are sold without contents and contents will be removed on collection** Booking for collection required.</p>	
<p>8</p>	<p>12m Steel Container - Store PC0012070 **Containers are sold without contents and contents will be removed on collection** Booking for collection required.</p>		<p>18</p>	<p>6m Steel Container PC006217 **Containers are sold without contents and contents will be removed on collection** Booking for collection required.</p>	

<p>19</p>	<p>6m Steel Container PC006164 **Containers are sold without contents and contents will be removed on collection** Booking for collection required.</p>		<p>27</p>	<p>6m Steel Container PC006736 **Containers are sold without contents and contents will be removed on collection** Booking for collection required.</p>	
<p>20</p>	<p>6m Steel Container PC006496 **Containers are sold without contents and contents will be removed on collection** Booking for collection required.</p>		<p>28</p>	<p>6m Steel Container PC006829 **Containers are sold without contents and contents will be removed on collection** Booking for collection required.</p>	
<p>21</p>	<p>6m Steel Container PC006097 **Containers are sold without contents and contents will be removed on collection** Booking for collection required.</p>		<p>29</p>	<p>6m Steel Container PC006119 **Containers are sold without contents and contents will be removed on collection** Booking for collection required.</p>	
<p>22</p>	<p>6m Steel Container 540 **Containers are sold without contents and contents will be removed on collection** Booking for collection required.</p>		<p>30</p>	<p>6m Steel Container PC006532 **Containers are sold without contents and contents will be removed on collection** Booking for collection required.</p>	
<p>23</p>	<p>6m Steel Container PC006385 **Containers are sold without contents and contents will be removed on collection** Booking for collection required.</p>		<p>31</p>	<p>6m Steel Container PC006178 **Containers are sold without contents and contents will be removed on collection** Booking for collection required.</p>	
<p>24</p>	<p>6m Steel Container PC006160 **Containers are sold without contents and contents will be removed on collection** Booking for collection required.</p>		<p>32</p>	<p>6m Steel Container WS009 **Containers are sold without contents and contents will be removed on collection** Booking for collection required.</p>	
<p>25</p>	<p>6m Steel Container PC006176 **Containers are sold without contents and contents will be removed on collection** Booking for collection required.</p>		<p>33</p>	<p>6m Steel Container **Containers are sold without contents and contents will be removed on collection** Booking for collection required.</p>	
<p>26</p>	<p>6m Steel Container PC006210 **Containers are sold without contents and contents will be removed on collection** Booking for collection required.</p>		<p>34</p>	<p>6m Steel Container PC006290 **Containers are sold without contents and contents will be removed on collection** Booking for collection required.</p>	

<p>35</p>	<p>6m Steel Container PC006279 **Containers are sold without contents and contents will be removed on collection** Booking for collection required.</p>		<p>43</p>	<p>6m Steel Container PC006673 **Containers are sold without contents and contents will be removed on collection** Booking for collection required.</p>	
<p>36</p>	<p>6m Steel Container PC006501 **Containers are sold without contents and contents will be removed on collection** Booking for collection required.</p>		<p>44</p>	<p>6m Steel Container PC006244 **Containers are sold without contents and contents will be removed on collection** Booking for collection required.</p>	
<p>37</p>	<p>6m Steel Container PC006198 **Containers are sold without contents and contents will be removed on collection** Booking for collection required.</p>		<p>45</p>	<p>6m Steel Container **Containers are sold without contents and contents will be removed on collection** Booking for collection required.</p>	
<p>38</p>	<p>6m Steel Container PC006250 **Containers are sold without contents and contents will be removed on collection** Booking for collection required.</p>		<p>46</p>	<p>6m Steel Container C0056/2902 **Containers are sold without contents and contents will be removed on collection** Booking for collection required.</p>	
<p>39</p>	<p>6m Steel Container IND/408/GLTA/2009 **Containers are sold without contents and contents will be removed on collection** Booking for collection required.</p>		<p>47</p>	<p>6m Steel Container PC006272 **Containers are sold without contents and contents will be removed on collection** Booking for collection required.</p>	
<p>40</p>	<p>6m Steel Container 105011 Cons6m **Containers are sold without contents and contents will be removed on collection** Booking for collection required.</p>		<p>48</p>	<p>6m Steel Container PC006278 **Containers are sold without contents and contents will be removed on collection** Booking for collection required.</p>	
<p>41</p>	<p>6m Steel Container PC006132 **Containers are sold without contents and contents will be removed on collection** Booking for collection required.</p>		<p>49</p>	<p>6m Steel Container **Containers are sold without contents and contents will be removed on collection** Booking for collection required.</p>	
<p>42</p>	<p>6m Steel Container PC006149 **Containers are sold without contents and contents will be removed on collection** Booking for collection required.</p>		<p>50</p>	<p>6m Steel Container LAB004 **Containers are sold without contents and contents will be removed on collection** Booking for collection required.</p>	

51	<p>6m Steel Container PC0082 **Containers are sold without contents and contents will be removed on collection** Booking for collection required.</p>		59	<p>6m Steel Container - Turnstyle SC/2009/419/GDY **Containers are sold without contents and contents will be removed on collection** Booking for collection required.</p>	
52	<p>6m Steel Container PC006158 **Containers are sold without contents and contents will be removed on collection** Booking for collection required.</p>		60	<p>6m Steel Container - Turnstyle 578/070 **Containers are sold without contents and contents will be removed on collection** Booking for collection required.</p>	
53	<p>6m Steel Container CTO216 **Containers are sold without contents and contents will be removed on collection** Booking for collection required.</p>		61	<p>6m Steel Container - Turnstyle PC006587 **Containers are sold without contents and contents will be removed on collection** Booking for collection required.</p>	
54	<p>6m Steel Container **Containers are sold without contents and contents will be removed on collection** Booking for collection required.</p>		62	<p>6m Steel Container - Turnstyle PC006034 **Containers are sold without contents and contents will be removed on collection** Booking for collection required.</p>	
55	<p>6m Steel Container 15016cons6m **Containers are sold without contents and contents will be removed on collection** Booking for collection required.</p>		63	<p>6m Steel Container - Turnstyle PC006816 **Containers are sold without contents and contents will be removed on collection** Booking for collection required.</p>	
56	<p>6m Steel Container CTS032 **Containers are sold without contents and contents will be removed on collection** Booking for collection required.</p>		64	<p>6m Steel Container - Clocking C01410/0014 **Containers are sold without contents and contents will be removed on collection** Booking for collection required.</p>	
57	<p>6m Steel Container PC006588 **Containers are sold without contents and contents will be removed on collection** Booking for collection required.</p>		65	<p>6m Steel Container - Clocking PC006478 **Containers are sold without contents and contents will be removed on collection** Booking for collection required.</p>	
58	<p>6m Steel Container - Turnstyle PC006035 **Containers are sold without contents and contents will be removed on collection** Booking for collection required.</p>		66	<p>6m Container - Flammable PC006261 **Containers are sold without contents and contents will be removed on collection** Booking for collection required.</p>	

67	<p>6m Container - Flammable PC006455 **Containers are sold without contents and contents will be removed on collection** Booking for collection required.</p>		75	<p>6m Steel Container - Foreman PC006088 **Containers are sold without contents and contents will be removed on collection** Booking for collection required.</p>	
68	<p>6m LAB Container LAB001 **Containers are sold without contents and contents will be removed on collection** Booking for collection required.</p>		76	<p>6m Steel Container - Foreman PC006558 **Containers are sold without contents and contents will be removed on collection** Booking for collection required.</p>	
69	<p>6m Seel Container Kitchen PC006227 **Containers are sold without contents and contents will be removed on collection** Booking for collection required.</p>		77	<p>6m Steel Container - Foreman AUB 503 **Containers are sold without contents and contents will be removed on collection** Booking for collection required.</p>	
70	<p>6m Steel Container - Foreman PC006372 **Containers are sold without contents and contents will be removed on collection** Booking for collection required.</p>		78	<p>6m Steel Container - Foreman WS001 **Containers are sold without contents and contents will be removed on collection** Booking for collection required.</p>	
71	<p>6m Steel Container - Foreman CTO100 **Containers are sold without contents and contents will be removed on collection** Booking for collection required.</p>		79	<p>6m Steel Container - Foreman PC006548 **Containers are sold without contents and contents will be removed on collection** Booking for collection required.</p>	
72	<p>6m Steel Container - Foreman PC006510 **Containers are sold without contents and contents will be removed on collection** Booking for collection required.</p>		80	<p>6m Steel Container - Foreman ABL004 **Containers are sold without contents and contents will be removed on collection** Booking for collection required.</p>	
73	<p>6m Steel Container - Foreman PC006163 **Containers are sold without contents and contents will be removed on collection** Booking for collection required.</p>		81	<p>6m Steel Container - Foreman 101010Cons6m **Containers are sold without contents and contents will be removed on collection** Booking for collection required.</p>	
74	<p>6m Steel Container - Foreman CTO082 **Containers are sold without contents and contents will be removed on collection** Booking for collection required.</p>		82	<p>6m Steel Container - Foreman **Containers are sold without contents and contents will be removed on collection** Booking for collection required.</p>	

<p>83</p>	<p>6m Steel Container - Store PC006044 **Containers are sold without contents and contents will be removed on collection** Booking for collection required.</p>		<p>91</p>	<p>6m Steel Container - Store PC006555 **Containers are sold without contents and contents will be removed on collection** Booking for collection required.</p>	
<p>84</p>	<p>6m Steel Container - Store PC006278 **Containers are sold without contents and contents will be removed on collection** Booking for collection required.</p>		<p>92</p>	<p>6m Steel Container - Store PC006486 **Containers are sold without contents and contents will be removed on collection** Booking for collection required.</p>	
<p>85</p>	<p>6m Steel Container - Store PC006550 **Containers are sold without contents and contents will be removed on collection** Booking for collection required.</p>		<p>93</p>	<p>6m Steel Container - Store PC006500 **Containers are sold without contents and contents will be removed on collection** Booking for collection required.</p>	
<p>86</p>	<p>6m Steel Container - Store PC006452 **Containers are sold without contents and contents will be removed on collection** Booking for collection required.</p>		<p>94</p>	<p>6m Steel Container - Store CTS154 **Containers are sold without contents and contents will be removed on collection** Booking for collection required.</p>	
<p>87</p>	<p>6m Steel Container - Store PC006553 **Containers are sold without contents and contents will be removed on collection** Booking for collection required.</p>		<p>95</p>	<p>6m Steel Container - Store PC006273 **Containers are sold without contents and contents will be removed on collection** Booking for collection required.</p>	
<p>88</p>	<p>6m Steel Container - Store **Containers are sold without contents and contents will be removed on collection** Booking for collection required.</p>		<p>96</p>	<p>6m Steel Container - Store 105027 Cons6m **Containers are sold without contents and contents will be removed on collection** Booking for collection required.</p>	
<p>89</p>	<p>6m Steel Container - Store PC006086 **Containers are sold without contents and contents will be removed on collection** Booking for collection required.</p>		<p>97</p>	<p>6m Steel Container - Store CTS200 **Containers are sold without contents and contents will be removed on collection** Booking for collection required.</p>	
<p>90</p>	<p>6m Steel Container - Store WS004 **Containers are sold without contents and contents will be removed on collection** Booking for collection required.</p>		<p>98</p>	<p>3m Steel Container - Store PC0115 042070 **Containers are sold without contents and contents will be removed on collection** Booking for collection required.</p>	

99

6m Steel Container - Store
 PC006523 **Containers are sold without contents and contents will be removed on collection** Booking for collection required.



100

6m Steel Container - Store
 PC006189 **Containers are sold without contents and contents will be removed on collection** Booking for collection required.



101

6m Steel Container - Store
 PC006714 **Containers are sold without contents and contents will be removed on collection** Booking for collection required.



102

6m Steel Container - Store
 PC006098 **Containers are sold without contents and contents will be removed on collection** Booking for collection required.



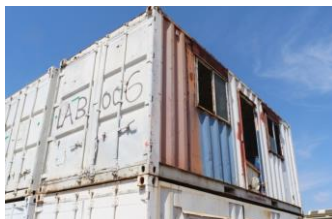
103

6m Steel Container - Store
 PC006588 **Containers are sold without contents and contents will be removed on collection** Booking for collection required.



104

6m Steel Container - Store
 LAB006 **Containers are sold without contents and contents will be removed on collection** Booking for collection required.



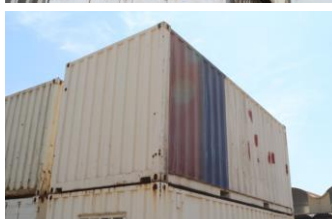
105

6m Steel Container - Store
 LAB007 **Containers are sold without contents and contents will be removed on collection** Booking for collection required.



106

6m Steel Container - Store
 LAB011 **Containers are sold without contents and contents will be removed on collection** Booking for collection required.



107

6m Steel Container - Store
 PC006146 **Containers are sold without contents and contents will be removed on collection** Booking for collection required.



108

6m Steel Container - Store
 PC006472 **Containers are sold without contents and contents will be removed on collection** Booking for collection required.



109

6m Steel Container - Store
 CTS011 **Containers are sold without contents and contents will be removed on collection** Booking for collection required.



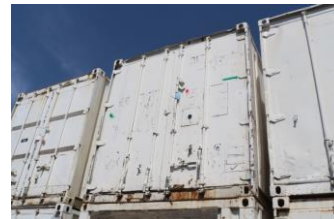
110

6m Steel Container - Oil Store
 PC006460 **Containers are sold without contents and contents will be removed on collection** Booking for collection required.



111

6m Steel Container - Oil Store
 PC006489 **Containers are sold without contents and contents will be removed on collection** Booking for collection required.



112

6m Steel Container - Oil Store
 C/2002/251/GDY **Containers are sold without contents and contents will be removed on collection** Booking for collection required.



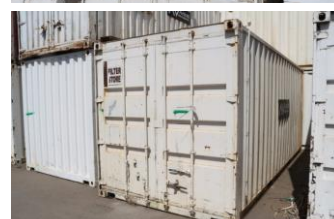
113

6m Steel Container - Oil Store
 PC006084 **Containers are sold without contents and contents will be removed on collection** Booking for collection required.



114

6m Steel Container - Filter Store
 105030 Cons6m **Containers are sold without contents and contents will be removed on collection** Booking for collection required.



115
6m Steel Container - Office
 PC006533 **Containers are sold without contents and contents will be removed on collection** Booking for collection required.



123
6m Steel Container - Office
 PC006535 **Containers are sold without contents and contents will be removed on collection** Booking for collection required.



116
6m Steel Container - Office
 PC006142 **Containers are sold without contents and contents will be removed on collection** Booking for collection required.



124
6m Steel Container - Office
 PC006099 **Containers are sold without contents and contents will be removed on collection** Booking for collection required.



117
6m Steel Container - Office
 PC006614 **Containers are sold without contents and contents will be removed on collection** Booking for collection required.



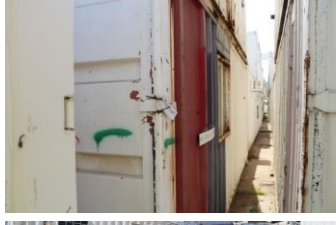
125
6m Steel Container - Office
 PC006577 **Containers are sold without contents and contents will be removed on collection** Booking for collection required.



118
6m Steel Container - Office
 578/306 **Containers are sold without contents and contents will be removed on collection** Booking for collection required.



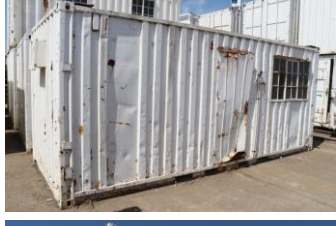
126
6m Steel Container - Office
 C00704/1000 **Containers are sold without contents and contents will be removed on collection** Booking for collection required.



119
6m Steel Container - Office
 CTS073 **Containers are sold without contents and contents will be removed on collection** Booking for collection required.



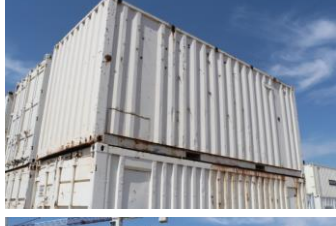
127
6m Steel Container - Office
 PC006612 **Containers are sold without contents and contents will be removed on collection** Booking for collection required.



120
6m Steel Container - Office
 578/244 **Containers are sold without contents and contents will be removed on collection** Booking for collection required.



128
6m Steel Container - Office
 CT0073 **Containers are sold without contents and contents will be removed on collection** Booking for collection required.



121
6m Steel Container - Office
 578/274 **Containers are sold without contents and contents will be removed on collection** Booking for collection required.



129
6m Steel Container - Office
 PC006139 **Containers are sold without contents and contents will be removed on collection** Booking for collection required.



122
6m Steel Container - Office
 PC006675 **Containers are sold without contents and contents will be removed on collection** Booking for collection required.



130
6m Steel Container - Office
 PC006475 **Containers are sold without contents and contents will be removed on collection** Booking for collection required.



131	<p>6m Steel Container - Office PC006450 **Containers are sold without contents and contents will be removed on collection** Booking for collection required.</p>		139	<p>6m Steel Container - Ablution PC006040 **Containers are sold without contents and contents will be removed on collection** Booking for collection required.</p>	
132	<p>6m Steel Container - Office C0114 **Containers are sold without contents and contents will be removed on collection** Booking for collection required.</p>		140	<p>6m Steel Container - Ablution PC006823 **Containers are sold without contents and contents will be removed on collection** Booking for collection required.</p>	
133	<p>6m Steel Container - Ablution MTC/2002/258/GDY MTC **Containers are sold without contents and contents will be removed on collection** Booking for collection required.</p>		141	<p>6m Steel Container - Ablution PC006381 **Containers are sold without contents and contents will be removed on collection** Booking for collection required.</p>	
134	<p>6m Steel Container - Ablution PC006059 **Containers are sold without contents and contents will be removed on collection** Booking for collection required.</p>		142	<p>6m Steel Container - Shower PC006390 **Containers are sold without contents and contents will be removed on collection** Booking for collection required.</p>	
135	<p>6m Steel Container - Ablution PC006695 **Containers are sold without contents and contents will be removed on collection** Booking for collection required.</p>		143	<p>6m Steel Container - Shower PC006657 **Containers are sold without contents and contents will be removed on collection** Booking for collection required.</p>	
136	<p>6m Steel Container - Ablution ABL004 **Containers are sold without contents and contents will be removed on collection** Booking for collection required.</p>		144	<p>3m Container Guard House CT0209 **Containers are sold without contents and contents will be removed on collection** Booking for collection required.</p>	
137	<p>6m Steel Container - Ablution PC006358 **Containers are sold without contents and contents will be removed on collection** Booking for collection required.</p>		145	<p>3m Container Guard House PC0040 **Containers are sold without contents and contents will be removed on collection** Booking for collection required.</p>	
138	<p>6m Steel Container - Ablution PC006377 **Containers are sold without contents and contents will be removed on collection** Booking for collection required.</p>		146	<p>2005 15 Ton A-Frame Gantry Crane Overhead cranes must be dismantled by the OEM (DEMAG) or equivalent competent companies which is for the cost of the buyer. Booking for collection required. Asset / Fleet No.: GC150002</p>	



- 147
- 2016 XHZ373GP Toyota Hilux 2.7VVTi SRX D/Cab**
 Kilometers: 157467
 VIN: AHTCS12G107636492
 Engine: 2TR8090099
 Color: White
 Asset No.: VL027063
- 148
- 2011 BP97FFGP Toyota Hilux D-4D 4x4 D/Cab**
 Kilometers: 232409
 VIN: AHTFR22GX06051236
 Engine: 2KD5573764
 Color: White
 Asset No.: VL030117
- 149
- 2008 XHZ383GP Toyota Hilux 2.7 VVTi D/Cab**
 Kilometers: 308797
 VIN: AHTEX39G407009555
 Engine: 2TR8110007
 Color: White
 Asset No.: VL027064
- 150
- 2011 BM46YFGP Toyota Hilux 2.5 D4D RB SRX LDV**
 With Mechanics Tool Canopy
 Kilometers: 343212
 VIN: AHTCR32G908014952
 Engine: 2KD5533894
 Color: White
 Asset No.: VL025098
- 151
- 2010 ZWS885GP Toyota Hilux 2.5D 4x2 LDV**
 with Service Canopy
 Kilometers: 252656
 VIN: AHTCR32G008012345
 Engine: 2KD5153433
 Color: White
 Asset No.: VL025039
- 152
- 2010 ZVX159GP Toyota Hilux 2.5D 4x2 LDV**
 With Service Canopy
 Kilometers: 306254
 VIN: AHTDR226605516379
 Engine: 2KD5150949
 Color: White
 Asset No.: VL025040



153

2011 BG36MGPP Toyota Hilux 2.5D RB SRX LDV
 With Service Canopy
 Kilometers: 358858
 VIN: AHTCR32G408013577
 Engine: 2KD5322694
 Color: White
 Asset No.: VL025042



154

2010 ZVV448GP Toyota Hilux D-4D S/Cab
 with Field Service Canopy
 Kilometers: 424173
 VIN: AHTCR32G008012216
 Engine: 2KD5132531
 Color: White
 Asset No.: VL025037



155

2011 FY56ZSGP Toyota Hilux D-4D S/Cab
 With Service Canopy
 Kilometers: 296675
 VIN: AHTCR32G608014777
 Engine: 2KD5506298
 Color: White
 Asset No.: VL025170



156

2011 BJ14LCGP Toyota Hilux 2.5D RB SRX
 Kilometers: 327473
 VIN: AHTCR32G908014160
 Engine: 2KD5377620
 Color: White
 Asset No.: VL025046



157

2014 DJ02ZXGP Toyota Hilux 2.5 D4D LDV
 Kilometers: 173847
 VIN: AHTCS12G607626358
 Engine: 2KDA598291
 Color: White
 Asset No.: VL025147



158

2011 BH14TZGP Toyota Hilux 2.5D 4D RB SRX LDV
 Kilometers: 300315
 VIN: AHTCR32G008013642
 Engine: 2KD5326275
 Color: White
 Asset No.: VL025044/LV025044



159

2010 ZDS113GP Toyota Hilux 2.5D LDV
 Kilometers: 306639
 VIN: AHTCS12G807541749
 Engine: 2KD7980503
 Color: White
 Asset No.: VL025093



160

2007 HT23BRGP Toyota Hilux 2.0 VVTi SRX LDV
 Kilometers: 321702
 VIN: AHTCW12G704017563
 Engine: 1TR8076387
 Color: White
 Asset No.: VL020173/LV006173



161	<p>2011 BK78WNGP Toyota Hilux 2.0 VVTi S/Cab Kilometers: 324778 VIN: AHTCW12G804039197 Engine: 1TR7129885 Color: White Asset No.: VL020235/ VL020081</p>		169	<p>2011 BG45NNGP Isuzu KB250 LE S/Cab Kilometers: 288488 VIN: ADM2RS86AA4555407 Engine: 4JK1991524 Color: White Asset No.: VL025013</p>	
162	<p>2010 YXR499GP Toyota Hilux VVTi Kilometers: 161027 VIN: AHTCW12G104028963 Engine: 1TR8230694 Color: White Asset No.: VL020248</p>		170	<p>2013 CS33FGGP Isuzu KB250 4x4 LDV Kilometers: 270336 VIN: ADMHSRCR3C4640814 Engine: 4JK1KS4838 Color: White Asset No.: VL025112</p>	
163	<p>2014 DH47SLGP Toyota Hilux 2.5 D4D LDV Kilometers: 234503 VIN: AHTCS12G607625990 Engine: 2KDA578710 Color: White Asset No.: VL025137</p>		171	<p>2006 DRK504EC Hyundai H100 2.6D Drop Side Kilometers: 292335 VIN: KMFZBN7BR6U224030 Engine: D4BB6339620 Color: White Asset No.: VL026039</p>	
164	<p>2016 FB61ZWGP Toyota Hilux 2.5D4D SRX RB S/C Kilometers: 203741 VIN: AHTCS12G407636423 Engine: 2KDA869454 Color: White Asset No.: VL025168</p>		172	<p>2008 XHS264GP Hyundai H100 Bakkie Kilometers: 215936 VIN: KMFZBN7BR8U394481 Engine: D4BB7550394 Color: White Asset No.: VL026072</p>	
165	<p>2010 ZLX708GP Toyota Hilux 2.0 VVTi LDV Kilometers: 299005 VIN: AHTCW12G904032856 Engine: 1TR6923536 Color: White Asset No.: VL020252</p>		173	<p>2010 YXM462GP Opel Corsa Utility 1.8 LDV Kilometers: 249957 VIN: ADMXF80JE84512102 Engine: 7W0015822 Color: White Asset No.: VL018019</p>	
166	<p>2010 ZDS058GP Toyota Hilux 2.5D LDV Kilometers: 301815 VIN: AHTCS12G007541292 Engine: 2KD7968396 Color: White Asset No.: LV0010092/VL025092</p>		174	<p>2009 YMR035GP Opel Corsa Utility 1.4 Base LDV Kilometers: 123384 VIN: ADMXF80JA84508499 Engine: 6W0101993 Color: White Asset No.: VL014014</p>	
167	<p>2008 XBP190GP Toyota Hilux 2.0 VVTi S/Cab Kilometers: 332119 VIN: AHTCW12G104019390 Engine: 1TR8102428 Color: White Asset No.: VL020244</p>		175	<p>2011 BG62PTGP Corsa Utility 1.4 A/C LDV Kilometers: 224883 VIN: ADMXF80JJ84557847 Engine: 6W0124239 Color: White Asset No.: VL014032</p>	
168	<p>2010 ZHG621GP Toyota Hilux 2.5D LDV **Not Selecting Gear** Kilometers: 410343 VIN: AHTCS12G407540128 Engine: 2KD7932825 Color: White Asset No.: VL025089</p>		176	<p>2010 ZNC514GP Chevrolet Corsa 1.4i Base LDV Kilometers: 137235 VIN: ADMXF80JA84536709 Engine: 6W0114885 Color: White Asset No.: VL014025</p>	

177	<p>2010 ZWD092GP Chevrolet Corsa 1.4i Base LDV Kilometers: 177889 VIN: ADMXF80JA84539464 Engine: 6W0116583 Color: White Asset No.: VL014028</p>		185	<p>2017 HB90MTGP Toyota Quantum 2.5D-4D GL 14 Seater Kilometers: 69510 VIN: JTFSS23P100167000 Engine: 2KDA940402 Color: White Asset No.: BU014041</p>	
178	<p>2010 ZHT590GP Chevrolet Corsa 1.4i Base LDV Cluster Faulty VIN: ADMXF80JA84529900 Engine: 6W0112113 Color: White Asset No.: VL014022</p>		186	<p>2016 FH95DVGTP Toyota Quantum 2.5D-4D 14 Seater Kilometers: 135506 VIN: JTFSS23P100153517 Engine: 2KDA906507 Color: White Asset No.: BU014038</p>	
179	<p>2008 XHY772GP Opel Corsa 1.4 LDV with Canopy Kilometers: 162439 VIN: ADMXF80JA84458997 Engine: 6W0084141 Color: White Asset No.: VL014005/ MU10005</p>		187	<p>2016 FB75FGGP Toyota Quantum 2.5D4D 14 Seater Kilometers: 128051 VIN: JTFSS23PX00150762 Engine: 2KDA897956 Color: White Asset No.: BU014036</p>	
180	<p>2016 FC63JYGP Toyota Corolla Quest 1.6 Kilometers: 136516 VIN: AHTLB52E703104922 Engine: 1ZRV205829 Color: White Asset No.: VC016001</p>		188	<p>2009 NU7720 Toyota Quantum VVTi GL 14 Seater Kilometers: 370209 VIN: JTFSS23P406058707 Engine: 2TR8186272 Color: White Asset No.: BU014031</p>	
181	<p>2016 FC77XRGP Toyota Corolla Quest 1.6 Kilometers: 123232 VIN: AHTLB52E703105018 Engine: 1ZRV216159 Color: White Asset No.: VC016002</p>		189	<p>2009 CA55697 Toyota Quantum D-4D 14 Seater Kilometers: 309292 VIN: JTFSS23P600037195 Engine: 2KD1679662 Color: White Asset No.: BU014001</p>	
182	<p>2011 BP26SFGP Isuzu KB250 D-Tech LE LWB Kilometers: 140942 VIN: ADM2RS86AA4570312 Engine: 4JK1142664 Color: White Asset No.: VL025018</p>		190	<p>2005 SKF385GP Mercedes Benz 115CD Vito Bus Kilometers: 295441 VIN: WDF63970323115289 Engine: 64698250109195 Color: White Asset No.: BU008002</p>	
183	<p>2010 YXR528GP Toyota Hilux VVTi LDV Kilometers: 307286 VIN: AHTCW12G504028948 Engine: 1TR8230720 Color: White Asset No.: VL020009</p>		191	<p>2008 XHK037GP Mercedes Benz Sprinter 315 Cdi 15 Seater Bus Kilometers: 196957 VIN: WDF9066332A985954 Engine: 64698951469266 Color: White Asset No.: BU015001</p>	
184	<p>2016 FB61YNGP Toyota Hilux 2.5 D4D RB SRX LDV Kilometers: 151000 VIN: AHTCR32G008031350 Engine: 2KDA869402 Color: White Asset No.: VL025159</p>		192	<p>2014 DH47RMGP Toyota Hilux 2.5D4D Kilometers: 382988 VIN: AHTCS12G807626011 Engine: 2KDA579628 Color: White Asset No.: VL025130</p>	

193	<p>2014 DH88WWGP Toyota Hilux 2.5D4D Kilometers: 151693 VIN: AHTCS12G307626336 Engine: 2KDA596385 Color: White Asset No.: VL025151</p>		201	<p>2013 CS33FDGP Isuzu KB250 4x4 S/cab Kilometers: 172256 VIN: ADMHSRRC3C4637220 Engine: 4JK1KS5946 Color: White Asset No.: VL025111</p>	
194	<p>2014 DH43HXGP Toyota Hilux 2.5 D4D Kilometers: 332872 VIN: AHTCS12G807625899 Engine: 2KDA578101 Color: White Asset No.: VL025142</p>		202	<p>2011 CN76DSGP Toyota Hilux 2.0 VVTi S/Cab With Canopy Kilometers: 165445 VIN: AHTCW12G204037171 Engine: 1TR7065137 Color: White Asset No.: VL020239</p>	
195	<p>2014 DH43GTGP Toyota Hilux 2.5D4D Kilometers: 211498 VIN: AHTCS12G707626162 Engine: 2KDA587229 Color: White Asset No.: VL025141</p>		203	<p>2016 FB62HJGP Toyota Hilux 2.5D4D SRX RB S/Cab Kilometers: 130238 VIN: AHTCR32G208031205 Engine: 2KDA862810 Color: White Asset No.: VL025158</p>	
196	<p>2007 DY90YHGP Toyota Hilux 2.5 D4D with Service Canopy Kilometers: 349583 VIN: AHTCS12GX07513631 Engine: 2KD7370163 Color: White Asset No.: VL025077</p>		204	<p>2008 XJG865GP Isuzu KB250 Fleetside S/Cab Kilometers: 218820 VIN: ADM2RS54H73467354 Engine: 4JA1666896 Color: White Asset No.: VL025080</p>	
197	<p>2014 DJ03BPGP Toyota Hilux 2.5 D4D Kilometers: 160094 VIN: AHTCS12G907626521 Engine: 2KDA606252 Color: White Asset No.: VL025146</p>		205	<p>2011 BD14MCGP Isuzu KB250 LWB Kilometers: 228484 VIN: ADM2RS54AA4539752 Engine: 4JA1921091 Color: White Asset No.: VL025015/10115</p>	
198	<p>2014 DH47MWGP Toyota Hilux 2.5 D4D Kilometers: 243429 VIN: AHTCS12G407626037 Engine: 2KDA578417 Color: White Asset No.: VL025136</p>		206	<p>2007 VYL191GP Nissan Hardbody LDV Kilometers: 91756 VIN: ADNJ080000E005231 Engine: KA20102246X Color: White Asset No.: VL020109</p>	
199	<p>2011 BL75WPGP Toyota Hilux D-4D S/Cab with Service Canopy Kilometers: 409284 VIN: AHTCR32G408014468 Engine: 2KD5421720 Color: White Asset No.: VL025236/ VL025106</p>		207	<p>2007 VYV707GP Nissan Hardbody LDV Kilometers: 111578 VIN: ADNJ080000E005344 Engine: KA20102374X Color: White Asset No.: VL020113</p>	
200	<p>2014 DH88XFGP Toyota Hilux 2.5 D4D Kilometers: 76146 VIN: AHTCS12G607626461 Engine: 2KDA603688 Color: White Asset No.: VL025152</p>		208	<p>2010 ZCW117GP Toyota Hilux 2.5D LDV **Speedometer not working** Kilometers: 407530 VIN: AHTCS12G607541071 Engine: 2KD7962840 Color: White Asset No.: VL025091</p>	

209
 2008 XJC614GP Ford Ranger
 2.5TD Super Cab
 Kilometers: 237366
 VIN: AFASXXMJ2S8G02629
 Engine: WLAT903145
 Color: White
 Asset No.: VL025076



210
 1998 NRL447GP Home Built
 Service Trailer
 VIN: AAPV0039830161922
 Asset No.: T0004034



211
 TMB823GP 1,000L Diesel
 Bowser
 Asset No.: TD010303



212
 1981 NBJ008GP Zanli 1,000L
 Diesel Bowser
 VIN: 75738
 Asset No.: TD010005



213
 2006 TLY362GP Forgeweld
 1,000L Diesel Bowser
 VIN: AAF114BRVBEE2396
 Asset No.: TD010012



214
 2007 VDS118GP Forgeweld
 1,000L Diesel Bowser
 VIN: AA9F114BRVBEE2476
 Asset No.: TD010015



215
 2008 XLH092GP Road Dog
 1,000L Diesel Bowser
 VIN: AA9B175008BKS1015
 Asset No.: TD010019



216
 2008 XTV461GP Road Dog
 1,000L Diesel Bowser
 VIN: AA9B175008BKS1107
 Asset No.: TD010022



217
 2007 VDS146GP Forgeweld
 1,000L Tanker
 VIN: AA9F114BRVBEE2477
 Asset No.: TD010014



218
 2010 YZF286GP AM
 Steelwork 1,000L Diesel
 Bowser
 VIN: AA9T115TMAMWD1006
 Asset No.: TD010002



219
 1984 LBD010GP Venter
 Single Axle Trailer
 VIN: SB135
 Color: White
 Asset No.: DB004006



220
 Tool Box Canopy For Hilux
 Asset / Fleet No.: VL025036.1



221
 2007 Demag 7.5 Ton Overhead
 Gantry Crane
 Overhead cranes must be
 dismantled by the OEM (DEMAG)
 or equivalent competent
 companies which is for the cost
 of the buyer. Booking for
 collection required.
 Asset / Fleet No.: GC080001



222
 2007/1971 Demag 5Ton Over
 Head Electric Crane
 Overhead cranes must be
 dismantled by the OEM (DEMAG)
 or equivalent competent
 companies which is for the cost
 of the buyer. Booking for
 collection required.
 Asset / Fleet No.: GC075001



223
 2007 Over Head Crane 3 Ton
 Overhead cranes must be
 dismantled by the OEM (DEMAG)
 or equivalent competent
 companies which is for the cost
 of the buyer. Booking for
 collection required.
 Asset / Fleet No.: GC030002



224
 Overhead Workshop Crane
 (LTA003) Incomplete & Dismantled
 Overhead cranes will be dismantled
 by the OEM (DEMAG) or equivalent
 competent companies which is for
 the cost of the buyer. Up to 60
 Working days for collections due to
 one mobile crane being available to
 assist with the dispatching.
 Booking of collection is important
 ad only booked collections will be
 helped on the day.





225
 2007 CNW974L Volvo A35D
ADT
 Hours: 30256
 VIN: A35DV72530
 Engine: 606843
 Asset No.: DUMP11



226
 2005 CNW981L Volvo A35D
ADT
 Hours: 26830 **CE-Plate**
 VIN: A35DV72156
 Engine: 523558



227
 2008 BYM368L Volvo A30E
ADT
 Hours: +- 14,500 **CE-Plate**
 VIN: VCE0A30EC00072315
 Engine: 163531



228
 2007 CNW971L Volvo A35D
ADT
 Hours: 29554
 VIN: A35DV72533
 Engine: 607542
 Asset No.: DUMP5



229
 2008 Volvo A30E ADT
 Hours: 13148
 VIN: VCE0A30EC00072413
 Asset / Fleet No.: SF156J



230
 2004 CPV672L Volvo A35D
ADT
 VIN: A35DV71023
 Engine: 332868
 Asset No.: DUMP 8



231
 2010 Caterpillar 730 6x6 ADT
 Hours: 10940
 VIN: CAT00730EB1M02998
 Asset / Fleet No.: DA030073



232

2004 SJT996GP Bell 2306D
Tractor
 Hours: 7892
 VIN: AEB1344404R001812
 Engine: 90694900399658
 Asset No.: TT170008



233

2004 RNN870GP Bell 2306D
Tractor
 Hours: 9146
 VIN: AEB1344404R001541
 Engine: 94900376014
 Asset No.: TT170006



234

2004 RBY301GP Bell B20D
Water Tanker
 Hours: 15616
 VIN: AEB4138104R001409
 Engine: 90694900361812
 Asset No.: WA018002



234a

2014 Caterpillar 938K Wheel
Loader
 Hours: 10232
 VIN: CAT0938KCCXT00686



**234
 b**

2014 Caterpillar 950H Wheel
Loader
 VIN: CAT0950HMXL00941



235

2011 Caterpillar 938H Wheel
Loader
 Hours: 9723
 VIN: CAT0938HPLKM01475
 Asset / Fleet No.: WL025007



236

2011 BM69MPGP Massey
 Ferguson MF480 4FWD
Tractor
 Hours: 2233
 VIN: ABYMF480CAB4WD013
 Engine: EX96107
 Asset No.: TT0015063



237

2011 BM69MFGP Massey
 Ferguson MF480 Tractor
 Hours: 2476
 VIN: ABYFMF480CAB4WD009
 Engine: EX96369
 Color: Red
 Asset No.: TT0015064



238

2007 VYN571GP New
 Holland 6610 Tractor
 Kilometers: 5653
 VIN: NH6610E400377010M
 Engine: PF182100
 Color: Blue
 Asset No.: TT001005



239

2015 DY36DPGP JCB 3CX 4x4 TLB
 with 4-in-1 Bucket Hours: 9324
 VIN: JCB3CX4TH81339766
 Engine: SB32040241U0843008
 Asset No.: BL004006



240

2009 Miller Big Blue Welder - Winget Dumper
 Serial No.: L4B2VK1536
 Asset / Fleet No.: DW400029



241

2011 Pan Crete Mixer V300D 9Kw
 Asset / Fleet No.: MC300024



242

2001 Winget 4B2000 LD Concrete Dumper
 Serial No.: L4B2MG1078
 Asset / Fleet No.: DC001029



243

2001 Winget 4B2000 LD Concrete Dumper
 Asset / Fleet No.: DC001027



244

2004 Winget Concrete Dumper
 Asset / Fleet No.: DC001021



245

2010 Broce RJT350 Broom Sweeper
 Hours: 4235
 Serial No.: 406597
 Asset / Fleet No.: BS024014



246

2010 Broce RJT350 Broom Sweeper
 Hours: 5454
 Serial No.: 407052
 Asset / Fleet No.: BS024009



247

2010 Broce RJT350 Broom Sweeper
 Hours: 2536
 Serial No.: 407051
 Asset / Fleet No.: BS024008



248

2010 Broce RJT350 Broom Sweeper
 Hours: 4362
 Serial No.: 407053
 Asset / Fleet No.: BS024010



249

2011 Container Type 26,000L Diesel Tanker
 Booking for collection required
 Asset / Fleet No.: DT026010



250

2011 Container Type 26,000L Diesel Tanker
 Booking for collection required
 Asset / Fleet No.: DT026006



251

2011 Container Type 26,000L Diesel Tanker
 Booking for collection required
 Asset / Fleet No.: DT026012



252

2011 Container Type 26,000L Diesel Tanker
 Booking for collection required
 Asset / Fleet No.: DT026007



253

2011 Container Type 26,000L Diesel Tanker
 Booking for collection required
 Asset / Fleet No.: DT026009



254

2011 Container Type 26,000L Diesel Tanker
 Booking for collection required
 Asset / Fleet No.: DT026005



<p>255</p>	<p>2011 Container Type 26,000L Diesel Tanker Booking for collection required Asset / Fleet No.: DT026008</p>		<p>263</p>	<p>2002 RFV019GP Paramount Tri Axle Drop Side Trailer VIN: AA9G336MA2AKA1377 Asset No.: TS040301</p>	
<p>256</p>	<p>2011 BJ34TPGP MAN TGS33.480 6x4 Horse Kilometers: 149328 VIN: AAM76W0333PX24922 Engine: 51527180342720 Color: White Asset No.: MH480021</p>		<p>264</p>	<p>KWT694GP Busaf Double Axle Flat Deck Trailer VIN: 432607 Asset No.: TS030016</p>	
<p>257</p>	<p>2010 YYZ892GP Busaf Bauer 4 Axle Lowbed Trailer VIN: AA9H480WA9WAWU2175 Color: White Asset No.: TL60003</p>		<p>265</p>	<p>1971 LBM847GP Henred Fruehauf Draw Bar Trailer 2 Axle Back / 1 Axle Front Dolly VIN: H18639 Asset No.: TS030018</p>	
<p>258</p>	<p>2010 YXH351GP Mercedes Benz Actros 3350S 6x4 Horse Kilometers: **342004 VIN: WDB9341616L366746 Engine: 54294000630114 Color: White Asset No.: MH500017</p>		<p>266</p>	<p>2014 DJ35MRGP Toyota Land Cruiser Prado Diesel A/T Kilometers: 65870 VIN: JTEBH3FJ30K143284 Engine: 1KD2436988 Color: White Asset No.: VC030052</p>	
<p>259</p>	<p>2007 VVL655GP Henred Fruehauf 2Axle 18Ton Trailer VIN: AAH132646PURF2122 Asset No.: TS018028</p>		<p>267</p>	<p>2013 Powerscreen Chieftan 2100 Mobile Screen Triple Deck Hours: 2288 VIN: PID00124CDGC95675 Asset / Fleet No.: CS521001</p>	
<p>260</p>	<p>2007 WBD449GP Mercedes Benz Actros 3350 6x4 Horse VIN: WDB9341616L211306 Engine: 54294000519408 Color: White Asset No.: MH500016</p>		<p>268</p>	<p>2007 Powerscreen Warrior 1800 Mobile Screen Hours: 11043 Serial No.: PID001237BD05074 Asset / Fleet No.: CS516001</p>	
<p>261</p>	<p>2004 RSC313GP SATB Double Axle Drop Side Trailer VIN: AHBSB3SD4B103342 Color: White Asset No.: TS018027</p>		<p>269</p>	<p>2009 ZLN070GP MAN TGA 34.350 Concrete Pump Truck VIN: WMAH49Z98M522744 Engine: 50519692471973 Color: White Asset No.: CP180017</p>	
<p>262</p>	<p>2007 BD76DHGP Mercedes Benz 2035 Actros 4x2 Horse Kilometers: 355504 VIN: WDB9340126L257782 Engine: 54192200547942 Color: White Asset No.: MH480002</p>		<p>270</p>	<p>2009 YJG216GP Mercedes Benz 2628B/33 Truck Pump Concrete CIFA Pump VIN: WDB9536416L333922 Engine: 90692100744769 Color: White Asset No.: CP100016</p>	

271

2012 Putzmeister BSA1409D Static Concrete Pump
VIN: 210107103
Asset / Fleet No.: CX120031



279

100Ton Cement Silo
Asset / Fleet No.: SI001039



272

2002 Putzmeister 1409D Concrete Pump
Static Concrete Pump
Hours: 3029
VIN: 210100990
Asset / Fleet No.: CX007



280

100Ton Cement Silo
Asset / Fleet No.: SI001040



273

50Ton Cement Silo
Asset / Fleet No.: SI001001



281

100Ton Cement Silo
Asset / Fleet No.: SI000006



274

50Ton Cement Silo
Asset / Fleet No.: SI001045



275

65Ton Cement Silo
Asset / Fleet No.: SI001043



276

65Ton Cement Silo
Asset / Fleet No.: SI001044



282

2017 HC44SMGP Mercedes Benz 1730 66 Seater Bus
Kilometers: 64232
VIN: 9BM384063HB060432
Engine: 926932U1202479
Color: White
Asset No.: BU065024



277

100Ton Cement Silo
Asset / Fleet No.: SI001041



283

2010 ZDJ360GP Mercedes Benz 1726 65 Seater Bus
Kilometers: 374037
VIN: 9BM3840638B625007
Engine: 902939U0800980
Color: White
Asset No.: BU065021



278

100Ton Cement Silo
Asset / Fleet No.: SI001042



284

2010 ZGJ549GP Hino 500-1626 Bus
Kilometers: 255047
VIN: AHHFG1JSPXXX14027
Engine: J08CTT40322
Color: White
Asset No.: BU065028



285
 2010 ZGV045GP Hino 500
 1626 Bus
 Hours: 4186
 VIN: AHHFG1JSPXX14025
 Engine: J08CTT40302
 Color: White
 Asset No.: BU065029



286
 2002 NYT669GP Mercedes
 Benz Atego 1517 Drop Side
 VIN: WDB9700786K745065
 Engine: 90491100241596
 Color: White



287
 2000 LBS957GP Mercedes
 Benz Actros 3331K/33 Water
 12,000L
 Kilometers: 225717
 VIN: WDB9521612K490312
 Engine: 54192000131003
 Color: White
 Asset No.: WR012003



288
 1995 Mercedes Benz Actros
 12,000L Water Tanker
 Hours: 409498
 VIN: 37914526020521
 Engine: VD02026SA008073Y
 Asset / Fleet No.: WR012001



289
 2010 ZSB767GP Isuzu
 NQR500 32 Seater Bus
 Kilometers: 120897
 VIN: ADMNR75RB8G507820
 Engine: 4HK1748038
 Color: White
 Asset No.: BU032005



290
 2010 ZRP435GP Isuzu
 NQR500 32 Seater Bus
 Kilometers: 144757
 VIN: ADMNR75RB8G491070
 Engine: 4HK1729778
 Color: White
 Asset No.: BU032004



291
 2010 YZG889GP Mercedes
 Benz Atego 1323 Drop Side
 Kilometers: 281053
 VIN: WDB9700676L430937
 Engine: 90691500804218
 Color: White
 Asset No.: VH007058



292
 2008 XGJ910GP Mercedes
 Benz Atego 1323 Drop Side
 Kilometers: 310301
 Hours: 7951
 VIN: WDB9700676L266837
 Engine: 90691000696983
 Color: White
 Asset No.: VH007056
 (VH07012)



293
 2014 DN36RTGP Mercedes
 Benz Axor 1823K Diesel Tank
 Kilometers: 70683
 VIN: WDB9525026L879576
 Engine: 906925C1075750
 Color: White
 Asset No.: DB090009



294
 2008 MDC591GP Mercedes
 Benz 8,000L Diesel Tanker
 Kilometers: 390321
 VIN: WDB9720722K521660
 Engine: 90491100157873
 Color: White
 Asset No.: DB009007



295
 2016 FL64CBGP Mercedes
 Benz Axor 2628B/33 Mixer Tr
 Kilometers: 81259
 VIN: WDB9536416L974871
 Engine: 906926C1100006
 Color: White
 Asset No.: TM006023



296
 2016 FL64CNGP Mercedes
 Benz Axor 2628B Mixer Truck
 Kilometers: 73235
 Hours: 3229
 VIN: WDB95364160058051
 Engine: 90626C1115045
 Color: White
 Asset No.: TM006022



297
 2005 SSX216GP MAN
 26.284M 6x4 6m³ Mixer
 Truck
 Kilometers: 103611
 VIN: AAML960486PX14274
 Engine: 15510375031042
 Color: White
 Asset No.: TM006019



298
 2011 BH37HFGP Hino 300
 814 Service Truck
 Kilometers: 300029
 Hours: 8054
 VIN: JHFYL20H009001369
 Engine: N04CTS17438
 Color: White
 Asset No.: VS004012



299
 2012 BS12CPGP Hino
 Service Truck
 with Lubrication System
 Kilometers: 89879
 VIN: JHFYL20H909001855
 Engine: N04CTS19750
 Color: White
 Asset No.: VS004014



300
 2007 NPN70367 Toyota Dyna
 4Ton Drop Side Tipper
 Kilometers: 241663
 VIN: JHFYE207004001595
 Engine: J05CD24822
 Color: White
 Asset No.: VM004031



301

2010 ZLP027GP Isuzu NPR400 Drop Side
 Kilometers: 251403
 VIN: ADMNP75PF8G529966
 Engine: 4HK1809899
 Color: White
 Asset No.: VM004001



307

2007 XYH264GP Grove RT530E-2 Rough Terrain Crane
 Hours: 6768
 VIN: 530227535
 Engine: 46769642
 Asset No.: CM030520



302

2007 WLK227GP MAN 15.220BB Crane Truck
 CW Pesci Crane
 Hours: 9160
 VIN: AAM631235PX17079
 Engine: 15814805241477
 Asset No.: VH907033



308

2009 XZZ342GP Grove RT530E 30 Ton Rough Terrain
 Crane Hours: 7702
 VIN: 530258141
 Engine: 21891559
 Color: Yellow
 Asset No.: CM030524



303

2000 KLP396GP Mercedes Benz 1517 Crane Truck
 with Fassi F120 Cab Mounted
 Crane Hours: 14855
 VIN: WDB9700782K452545
 Engine: 90491100111783
 Color: White



309

2006 Grove RT530E 30Ton Rough Terrain
 Crane with Spare Hook Block
 Serial No.: 224747
 Asset / Fleet No.: CM030035



310

2006 HS86NCGP Grove RT530E 30 Ton Rough Terrain
 Crane Hours: 9014 Serial: 224806
 VIN: G224806
 Engine: 46568712
 Asset No.: CM030034



311

2008 Tadano TR250M-6 25 Ton Rough Terrain Crane
 Serial No.: FB2391
 Asset / Fleet No.: CM025020



304

2009 YPL544GP Grove RT540E 35Ton Rough Terrain
 Crane Serial: 258176 Hours: 7519
 VIN: 540258176
 Engine: 21895875
 Asset No.: CM035002



312

2010 Bobcat T40170 Telescopic Handler
 Hours: 7888
 Serial No.: A8GB12589
 Asset / Fleet No.: TH014014/THB0B14



305

2009 YPL534GP Grove RT540E 35Ton Rough Terrain
 Crane Hours: 8081
 VIN: 540258144
 Engine: 21883094
 Asset No.: CM035001



313

2008 JCB 540-170 Loadall Tele Handler
 Hours: 8539
 Asset / Fleet No.: TH014022/THMH1022



306




2008 XSJ135GP Grove RT530E-2 30Ton Rough Terrain
 Crane Hours: 5915
 VIN: 530228087
 Engine: 46805619
 Asset No.: CM030521



314

2008 HR26CRGP Manitou MT1840 Telehandler
 Hours: 11959
 VIN: MF1259839
 Engine: RG81649U461748S
 Asset No.: TH014028/TLH0017



<p>315</p>	<p>2008 JLG 660SJ 22m Cherry Picker Hours: 3367 Serial No.: 0300122062 Asset / Fleet No.: CH012002/ CH0002</p>		<p>323</p>	<p>Tyre Bead Breaker Asset / Fleet No.: WE001033</p>	
<p>316</p>	<p>2003 JLG 800AJ Diesel Boom Lift Hours: 1134 Serial No.: 0300063665 Asset / Fleet No.: CH024002.1</p>		<p>324</p>	<p>1999 Haco 135Ton x 3800mm Hydraulic Press Brake Serial No.: 90076 Asset / Fleet No.: WE001032</p>	
<p>317</p>	<p>2008 Hyster 5 Ton Diesel Forklift Hours: 8623 Serial No.: K005A08198B Asset / Fleet No.: FL030006</p>		<p>325</p>	<p>2003 Elga 10mm x 2500mm Guillotine Asset / Fleet No.: WE001011</p>	
<p>318</p>	<p>2007 Mitsubishi 2.5Ton Diesel Forklift Hours: 4537 Asset / Fleet No.: FL025001</p>		<p>326</p>	<p>Elga 13mm Guillotine Asset / Fleet No.: WM0014</p>	
<p>319</p>	<p>1974 Bencor 100Ton Hydraulic Press Asset / Fleet No.: WE001017</p>		<p>327</p>	<p>1977 CME FU.2 Milling Machine Asset / Fleet No.: WE001009</p>	
<p>320</p>	<p>2005 Heli MG Plate Roller Asset / Fleet No.: WE001050</p>		<p>328</p>	<p>Metal Hack Saw</p>	
<p>321</p>	<p>2008 Hydraulic Swing Beam Shear Asset / Fleet No.: WE001036</p>		<p>329</p>	<p>2001 Miller 450Amp Welding Machine Asset / Fleet No.: EW450452</p>	
<p>322</p>	<p>2008 Hydraulic Profile Bender Asset / Fleet No.: WE001035</p>		<p>330</p>	<p>2005 Hydraulic Boom & Base 40m Mast Asset / Fleet No.: CB040023</p>	

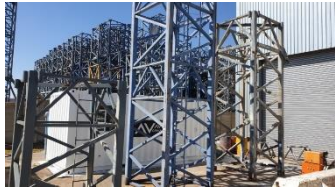
331 2005 Hydraulic Boom & Base
 40m Mast
 Asset / Fleet No.: CB040022



332 5,1m Length Boom Placer Section



333 5,5m Length Boom Placer Sections



334 2,5m Length Boom Placer Section



335 2002 Pressure Power Sandblaster
 Asset / Fleet No.: WE001007



336 2015 Jack Load Testing Machine
 VIN: 140354
 Asset / Fleet No.: WE001203



337 1988 Klerkscale 18m x 3m Weighbridge
 Knocked Down
 Components are currently not on site and will be delivered once collection arrangements are made
 Asset / Fleet No.: WB060801



338 2012 Surface Weighbridge
 Components are currently not on site and will be delivered once collection arrangements are made
 Asset / Fleet No.: WB060805



339 2010 Wirtgen WR2400 Reclaimer
 Left Rear Planetary Gears Removed
 Hours: 5923
 VIN: 05WR0247
 Serial No.: 05WR0247
 Asset / Fleet No.: CB005



340 2006 Wirtgen W1000F Milling Machine
 Hours: 5155
 Serial No.: 0181
 Asset / Fleet No.: MM010001/ MM1001



341 2013 Vogele S1800-2 Spray Jet Paver
 Hours: 3996
 Asset / Fleet No.: PV60006



342 2010 Vogele Super 1803-2 Paver
 Serial No.: 08830683
 Asset / Fleet No.: PV600005



343 2015 Vogele 1800-3 Paver
 Hours: 3787
 Serial No.: 14820605
 Asset / Fleet No.: AP06



344 2006 Dynapac F150C Paver
 Hours: 4850
 Serial No.: 6060729
 Asset / Fleet No.: PV700003



345

2013 Roadtec SB2500D Shuttle Buggy
 Material Transfer Unit
 Serial No.: SB2500D-1239
 Asset / Fleet No.: MT025001



351

2014 Komatsu PC400-8 Excavator
 Hours: 7655
 VIN: KMTPC192L02071256
 Asset / Fleet No.: EX0400001



352

2014 Komatsu PC400-8 Excavator
 Hours: 8148
 VIN: KMTPC192A02071255
 Asset / Fleet No.: EX0400002



353

2015 Komatsu PC300-8 Excavator
 Hours: 4790
 VIN: KMTPC191KFC064262
 Asset / Fleet No.: EX030013



346

2014 DF70ZLGP Caterpillar 140H Motor Grader
 Hours: 7000
 VIN: CAT0140KASZL02463
 Engine: KHX57286
 Asset No.: MG014047



354

2011 Caterpillar 336D LME Excavator
 Hours: 12000
 VIN: CAT0336DPTB00248
 Asset / Fleet No.: EX035003



347

2010 ZCY716GP Bell 770G Motor Grader
 Hours: 8277
 VIN: DW770GX627209
 Engine: RG6090G000713
 Asset No.: MG019004



355

2011 Caterpillar 336D LME Excavator
 With Rock Bucket Trimble
 Hours: 10389
 VIN: CAT0336DLPTB00251
 Asset / Fleet No.: EX035004



348

2008 XLR833GP Caterpillar 140H Motor Grader
 Kilometers: 13250
 VIN: CAT0140HVXZH01001
 Engine: 10Z50301
 Asset No.: MG014039



356

2011 Caterpillar 336D LME Excavator
 Hours: 11331
 VIN: CAT0336DCM4T01047
 Asset / Fleet No.: EX035001



349

2000 NRL704GP Caterpillar 140H Motor Grader
 Hours: 22278
 VIN: ABD0318AHYBMGS031
 Engine: 6NC19673
 Asset No.: MG014035



357

Caterpillar 320D Excavator Bucket
 Asset / Fleet No.: EX020014.1



350

2003 PXX615GP Caterpillar 140H Motor Grader
 Hours: 23657
 VIN: CAT0140HH5HM02256
 Engine: 10Z41469
 Asset No.: MG014034



358

2012 Caterpillar Excavator Quick Coupler & Ripper
 Asset / Fleet No.: EX002



359

Excavator Quick Coupler
Asset / Fleet No.: EX003



360

Excavator Quick Coupler
Asset / Fleet No.: EX004



361

2015 WEP 16m x 12m Quick Assembly Workshop
Complete Structure No Sheeting
Asset / Fleet No.: WS161202



362

2015 WEP 16m x 12m Quick Assembly Workshop
Complete Structure
Asset / Fleet No.: WS161201



363

2008 Komatsu D275A-5 Track Dozer
VIN: KMT0D047C02025658



364

2008 Komatsu D275A-5 Track Dozer
VIN: KMT0D047J02025657



365

2009 Komatsu D155AX-5 Dozer
Hours: 12240
VIN: KMT0D061V02076684
Asset / Fleet No.: TC008006



366

2011 Bomag BW226-DI4 BVC Roller

Hours: 6584
Serial No.: 101582861111
Asset / Fleet No.: VR026001



367

2014 Bomag BW212 Vibrating Roller

Hours: 5412
Serial No.: 101582433045
Asset / Fleet No.: RV010035



368

2015 Bomag BW213-DH-4 BVC Roller

Hours: 4233
VIN: 101584121026
Serial No.: 101584121026
Asset / Fleet No.: RV019005



369

2014 Bomag BW212 Vibrating Roller

Hours: 4925
Serial No.: 101582433094
Asset / Fleet No.: RV010034



370

2004 Bomag BW219-DH-3 Roller

Hours: 13800
Serial No.: 101580541098
Asset / Fleet No.: RV019001



371

2009 YTO LPT2030H Pneumatic Roller

Hours: 2152
Asset / Fleet No.: RP030001



372

2009 YTO LPT2030H Pneumatic Roller

Hours: 4189
 VIN: 093
 Asset / Fleet No.: RP030002/PR03002P



373

2009 YTO LPT2030H Pneumatic Roller

Hours: 2782
 VIN: 095
 Asset / Fleet No.: RP030004



374

2017 Hamm HD75VV Tandem Roller

Hours: 1300
 Asset / Fleet No.: RT008009



375

2009 Hamm HD75 Tandem Roller

Hours: 4191
 VIN: 250215
 Asset / Fleet No.: RT008008



376

2009 Hamm HW90B/12 3-Wheel Roller

Hours: 4121
 Serial No.: H1231066
 Asset / Fleet No.: RS014002



377

2005 Hamm HW90/10 3-Wheel Roller

Hours: 9432
 Serial No.: 44560
 Asset / Fleet No.: RS010005



378

2010 Hamm HW90B/12 3-Wheel Roller

Hours: 3029
 Serial No.: H1231068
 Asset / Fleet No.: RS014001



379

1996 RYT861GP Miller 401DX Welding Machine

VIN: W6207
 Asset No.: DW400022



380

2011 Caterpillar 750Kva Diesel Generator
 1998 Book for collection if you require craneage.
 Hours: 1162
 Serial No.: 2WJ01835
 Asset / Fleet No.: PP750001/GS045018



381

2005 Leroy 725Kva Generator (Containerised)
 Book for collection if you require craneage.
 Hours: 4975
 Asset / Fleet No.: PP700001



382

2005 Caterpillar 600Kva Diesel Generator
 Book for collection if you require craneage.
 Hours: 6042
 Asset / Fleet No.: PP600002



383

2007 Caterpillar Olympian 220Kva Diesel Generator
 with Perkins Engine, Olympian Control Panel and Levato ATS. **Non-runner**
 Hours: 2716
 VIN: OLY00000JRN50514
 Asset / Fleet No.: PP220003
 Book for collection if you require craneage.



384

2007 Leroy 60Kva Diesel Generator
 with FAW Engine and Datacom Control Book for collection if you require craneage.
 VIN: WA230772
 Asset / Fleet No.: PP060013



384 a

Keypower 50Kva Silent Diesel Generator on Trailer with ATS, Built in Diesel Tank, 3 Phase and Silent Enclosure



384 b

Keypower 50Kva Silent Diesel Generator on Trailer with ATS, Built in Diesel Tank, 3 Phase and Silent Enclosure



384 c

Keypower 50Kva Silent Diesel Generator on Trailer with ATS, Built in Diesel Tank, 3 Phase and Silent Enclosure



384
d
Keypower 50Kva Silent Diesel Generator on Trailer with ATS, Built in Diesel Tank, 3 Phase and Silent Enclosure



385
2008 Caterpillar Olympian 165Kva Diesel Generator with Perkins Engine, Olympian Control Panel and Levato ATS Hours: 2008 VIN: OLY00000CRTG06658 Asset / Fleet No.: PP165042 **In Container Book for collection if you require craneage.**



386
2008 Caterpillar Olympian 165Kva Diesel Generator with Perkins Engine, Olympian Controls Panel and Levato ATS Hours: 1541 VIN: OLY00000PRTG06994 Asset / Fleet No.: PP165043 **In Container Book for collection if you require craneage.**



387
2008 Atlas Copco XAS137DD Compressor Hours: 1862 Serial No.: AIP741395 Asset / Fleet No.: CO240073



388
2009 Tenant M20 Broom Sweeper Scrubber Serial No.: M204050173 Asset / Fleet No.: BS010002



389
2013 Darby 340pac Compressor with Pipe Liner Deutz Engine and Quincy Compressor



390
1974 Site Compressor with Ingersoll Rand Head 7.5kW



391
2010 Atlas Copco 15hp Compressor Asset / Fleet No.: PC037045



392
2000 Deutz 150mm Water Pump VIN: 607014312 Asset / Fleet No.: WP006004



393
2004 Deutz 150mm Water Pump with Hatz Engine Hours: 1490 Asset / Fleet No.: WP006013/ WP0613



394
2016 Deutz 6" Water Pump VIN: 1601786 Asset / Fleet No.: WP006017



395
2000 Deutz 150mm Water Pump Hours: 1917 Asset / Fleet No.: WP006002



396
2016 Deutz 6" Water Pump Hours: 27 VIN: 1601786 Asset / Fleet No.: WP006018



397
Workshop Compressor with Fini Solid Air Head



End of auction – thank you for attending
 See our upcoming nationwide auctions on
www.whauctions.com