

AUCTION CATALOGUE

Business Rescue Auction - Sustainable Fibre Solutions (Pty) Ltd

TUE. 17 MARCH (10H30) ON-SITE AT WINTERTON, KZN

SUSTAINABLE FIBRE
SOLUTIONS



Guideline for the auction



BID LIVE OR ON WEBCAST
whauctions.com

Note: Your bid excludes buyers premium, Natis fee & VAT. This will be added to your bid amount when invoiced.

Register at the auction or on www.whauctions.com to bid online.

Call **011 574 5700** or email info@whauctions.com for registration forms & banking info

Live & Webcast Auction

TUE 17 MARCH (10H30)

On-site at Winterton, KZN

LOCATION: Lookup "IDC Winterton" on Google maps

VIEW: Mon 16 March
CONTACT: Tim 082 371 1069
 Prelena 082 34 01001
 Office 011 574 5700

TO BID: R 250 000.00 – Property and Plant
 R 25 000.00 – Smalls

BUYERS PREMIUM: 10% if bidding live / 12% if bidding via Webcast
VAT: 15%

OTHER FEES: Natis fee per vehicle: R2100.00 including VAT.
 Cash deposits: An admin fee of 2% will be levied on cash deposits made into our account.

PAYMENTS: All bids are STC - Subject to onfirmation of acceptance by the sellers within 7 days.
 Invoices are issued immediately after the auction & must be settled in 24 hours. by EFT. Cash is not accepted.

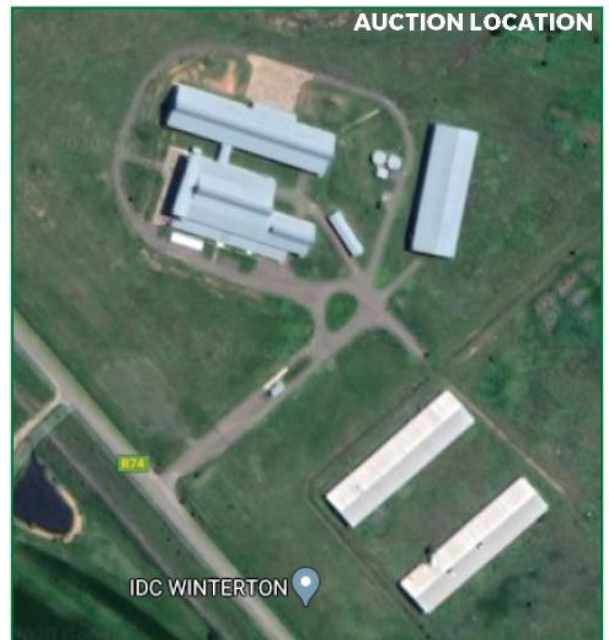
DISPATCH: See note below in red. Dispatching for smalls will ONLY commence from 23 March 2020 to 24 March.
 Dismantling, rigging, loading & safety is the buyers responsibility.

REGISTRATION HELP: 011 574 5700 / info@whauctions.com

AUCTIONEERS: Shannon Winterstein



Sustainable Fibre Solutions (Pty) Ltd
In Business Rescue



PLEASE NOTE Order of Sale:

1. Smalls
2. Plant
3. Property
4. Plant and Property

NB: The purchaser will be responsible for any damages whilst removing and dismantling the plant. We will require an additional deposit of R 250 000.00 payable immediately from the successful bidder which will be fully recoverable on completion of dismantling.

NOTICE TO BIDDERS:

To bid, a refundable registration deposit & Fica documents will be required. Bidding will not be approved unless all necessary documents are completed. Bids exclude Buyers Premium & any applicable Fee's (such as vehicle Natis doc fees) & VAT - this will be added on your Invoice. Webcast bidders can pre-bid online as soon as you are registered.

Our rules of auction comply with section 45 of the Consumer Protection Act, Act 68 of 2008.

All printed information regarding this sale is merely a guide, subject to change and neither the auction company, sellers or publishers shall be liable for any errors in this brochure.

KNOW WHAT YOU'RE BIDDING ON

This catalogue is a guide, you are encouraged to inspect goods before bidding. We / the sellers do not verify hour / meter readings. Goods are sold as-is with no duty to repair. E&OE.



Bank finance

Anton : 083 790 0090



Transport

Rob : 011 609 3005



Cargo freight & clearance

Kumarie : 061 734 7394



0

INDUSTRIAL PROPERTY
See property bidders pack for details.

Erf Size: ± 44 Hectares
GLA: 11,186m2
Location: Along the R74
10km Outside town of Winterton, Kwazulu Natal

Comprises:

- 2x Warehouses, Dry Storage Warehouse, 4x Open Storage Sheds, Offices & Yard Space.
- 1300kVA, 3-phase power
- 2x 650kVA back-up generators
- Fire suppression system
- Pump Houses, Lighting Masts & Weighbridge



1d

Assorted PVC Sheets



1e

Press Packaging System



1

2x Temafa Decortication Lines
** Asset breakdown of the lines available at the back of this catalogue.



2

Electric 4 Lamp Light Tower



1a

Steel Mobile Trolley



3

2.5Ton Pallet Jack



1b

Assorted Baler Wire on Pallet



4

Single Small Light Tower



1c

Assorted Dust Extractor Bags



5

Falcon F80 Tow Behind Finishing Rotary Mower
Serial: 24096-7414A





6

**2005 Manitou
MLT627T Telehandler**
Serial No.: 211437



12

**Drawbar Trailer
Flatdeck**



7

**2006 Toyota 1.8Ton
Diesel Forklift**
Hours: 1250
Serial No.:
608FD1810180



13

**Floor Mounted
Electronic Scales**



8

**2006 Toyota 1.8Ton
Diesel Forklift**
Hours: 1387
Serial No.:
608FD1810189



14

**Trailer Mounted
Hydraulic Bailer**



9

**2007 Genie Z-34/22
Electric Articulated Lift**
Hours: 183
Serial No.: z3407-5727



15

**Tractor Grass Cutting
Attachments**



10

**NB5541 Mahindra
Bolero SC Turbo S/Cab**
Kilometers: 139093
VIN:
MA1ST4BKC72E27426
Engine: BK74E13797
Color: Green



16

**Massey Ferguson 399
Open Cab Tractor**
Hours: 8137
Serial No.:
C05012C19286



11

**Drawbar Trailer
No Papers**



17

**Massey Ferguson
399E Tractor**
Hours: 8731
Serial No.:
C105012C19308





18	Single Axle Fire Fighting Trailer		25	Chemical Plastic Sprayers x 2	
19	Assorted Used Tyres x 3		26	Mapka CMT-200M Compactor	
20	Agria Walk Behind Clipper Mowers		27	Columbo Bailer Transfer Line	
21	Diesel Tank on Steel Stands x 2		28	Hans Wittrock Hempcut 4500 Cutter	
22	Agpro 46 Petrol Lawnmower		29	Contents of Parts Room for (Lot 1)	
23	Yanmar YDL600 Diesel Generator		30	Content of Workshop	
24	Manuel Compression Roller		31	Contents of Kitchen	



32	Contents of Office 1		39 Endercolts EFL200 Sieve Shaker	
33	Contents of Office 2		40 Moister Meter and Scale	
34	Contents of Office 3		41 Contents of Reception Area	
35	Contents of Conference Room		41a Contents of Canteen & Locker Room	
36	Contents of Server Room		42 Assorted Electrical Cable Rolls	
37	Contents of Office 4		43 Atlas Copco ZT37 37kW Oil Free Air Compressor ZT37FF with Receiver Tank	
38	Contents of Office 5 - Excluding Lab Equipment		44 Standby Enclosed Generator	

Lot 1

Temafa Decortication Lines consist of:

LINE 1

Temafa Lattice Feed Table Ser # 9507FT L9 ;
 Temafa Lin Bale Opener Ser # 9215LB009 ;
 Temafa Lin Structural Breaker Ser # 9247LOC004 ;
 Temafa Sieves Conveyor Belt ;
 Temafa Lin Structural Breaker Ser # 9247LOC005 ;
 Temafa Condenser Unit ;
 Temafa Feed Table ;
 Temafa Metal Detector With Conveyor Belt ;
 Temafa Lin Breaker With Sound Absorb Hood ;
 Temafa Lin Pedal Shaker 9246lp14 ;
 Temafa Shives Conveyor Belt ;

LINE 2

Temafa Lattice Feed Table Ser # 9507FT L10 ;
 Temafa Lin Bale Opener Ser # 9215LB010 ;
 Temafa Lin Structural Breaker Ser # 9247LOC006 ;
 Temafa Shives Conveyor Belt ;
 Temafa Lin Structural Breaker Ser # 9247LOC007 ;
 Temafa Feed Table ;
 Temafa Metal Detector With Conveyor Belt ;
 Temafa Lin Breaker With Sound Absorb Hood ;
 Temafa Lin Pedal Shaker Ser # 9246LP13 ;
 Temafa Shives Conveyor Belt ;

FIBRE DOSING & CORE CLEANING SECTIONS

Temafa Conveying Fan Ser # 9521FV299 ;
 Temafa Fibre Diverter Unit Ser # 9707AVDZ ;
 Temafa Conveying Fan Ser # 9521FV466 ;
 Temafa Conveying Fan Ser # 9521FV294 ;
 Temafa Conveying Fan Ser # 9521FV293 ;
 Temafa Conveying Fan Ser # 9521FV291 ;
 Temafa Lin Step Cleaner Ser # 9252LIC5 ;
 Temafa Lin Step Cleaner Ser # 9252LIC4 ;
 Temafa Lin Opener Ser # 9252LOV4 ;
 Temafa Lin Opener Ser # 9251LOV5 ;
 Van Dommele Hammer Mill "Hm1100" Ser # P05/3141 ;
 Van Dommele Air Separator ;
 Van Dommele Air Separator ;
 Van Dommele Drum Sieve- Short Fibre ;
 Van Dommele Screw Conveyor ;
 Van Dommele Screw Conveyor ;
 Temafa Product Air Conditioning Plant ;
 Van Dommele Automatic Dust Filters With Fans ;
 Van Dommele Automatic Dust Filters With Fans ;
 Van Dommele Automatic Dust Filters With Fans ;
 Van Dommele Cyclone ;

Van Dommele Cyclone ;
 Van Dommele Cyclone ;
 Van Dommele Duvex Conveyor ;
 Van Dommele Duvex- Core ;
 Temafa Fibre Dosing Unit ;
 Hydr & Auto Fibre Spraying System ;
 Temafa Bucket Wheel Condenser ;
 Van Dommele Conveying Fan ;
 Van Dommele Crusher Fan ;
 Van Dommele Crusher Fan ;
 Van Dommele Conveying Fan ;
 Temafa Bucket Wheel Condenser ;
 Temafa Bucket Wheel Condenser ;
 Temafa Bucket Wheel Condenser ;

FACTORY ELECTRIC RETICULATION SYSTEM

Merlin Gerin Incomer Main Switch Minisub ;
 Temafa Siematic Multi Control Panel- Touch ;
 Temafa Siematic Multi Control Panel- Touch ;
 Temafa Siematic Multi Control Panel- Touch ;
 Van Dommele Control Panel (Touch) Ser # Ip-6av654 5oda100axo ;
 Merlin Green Breaker Battery Charging Pack ;
 Merlin Green Coupler Sfs/Temafa ;
 Merlin Green Feeder Breaker Transformer 1 ;
 Merlin Green Feeder Breaker Transformer 2 ;
 Merlin Green Feeder Breaker Mini Sub ;
 Merlin Green Feeder Breaker Temafa Trans 1 ;
 Merlin Green Feeder Breaker Vde Trans 2 ;
 Merlin Green Feeder Breaker Sfs Trans 1 ;
 Merlin Green Genset Breaker ;
 Merlin Green Incomer Breaker From Eskom ;
 Merlin Green Income Main Switch Transformer 1 ;
 Merlin Green Income Main Switch Transformer 2 ;
 Gama Panels 12 Cubicle Grey Panel 1 Ser # D09946 ;
 Gama Panels 5 Cubicle Grey Panel 2 Ser # 12650 ;
 Gama Panels 23 Cubicle Orange Panel 3 (061321) Ser # G05023801 ;
 Gama Panels 3 Cubicle Red Panel 4 Ser # Sfs Factory ;
 Lovato Pf Correction Transformer 1 ;
 Lovato Pf Correction Transformer 2 ;
 Siemanes Transformer 1 Epto 2065 ;
 Siemanes Transformer 2 Epto 2065 ;

BALING

Willems Core Baler- (Holland) Ser # 2051209(Bpc200 V-20) ;
 Valvan Short Fibre Baler- (Belgium) ;
 Valvan Long Fibre Baler- (Belgium).



Industrial Property & Machinery Auction per Attorney Instruction **Atlantis Forge (Pty) Ltd**

AUCTION: THU 19 MARCH

11 William Gourly Street, Atlantis Industria, Cape Town

View: Wed 18 March
Registration: R25,000 (refundable deposit) & Fica docs required.



Industrial Facility located at Atlantis Industrial, Cape Town

- Ideal for Logistics & Storage
- GLA – 6 000sqm & Land Size – 35 000sqm
- Close Proximity To Major Transport Routes

To view the property or for info pack,
call Tallon 072 599 6075

Engineering & Forging Equipment including large quantity of scrap / spares / salvage material

- Correa Milling Machine A205/1978
- SHW Vertical CNC Milling machine UF-6
- Agie Spark Erodors EMS440 & EMS430 (x2)
- Maho MH1200W CNC milling machine
- Haas high speed CNC milling machine VF-6B/40 (x2)
- Mattai Compressor 10 Bar (5,5KW)
- Ecostar Airdryer
- Asquith Radial Arm Drill ODIMK2
- Stiefelmayer 3D Measuring machine
- Mitco Lathe (x2)
- Epag furnace 90Kw
- Muller Arc-welder
- FNK Milling Machine
- IMUT Expert Cut-off Saw
- Kasto Horizontal blade saws (x2)
- Ajax Induction heater +5 ton/Hr max
- Eumuco reducer roll
- Forgefeed slat conveyor
- Billet Descaler 8pc 200 Bar pumps
- Weingarten Screw Press
- Clip feed conveyer
- Muller hydraulic 1000ton H-Frame press
- Cooling conveyor +- 45 mtr
- Overhead cranes 30, 10 & 5 Ton (x5)
- 800KW Electric Oven (x2)
- Quench bath with storage tanks
- Hydraulic Press 150Ton,
- Reichelster Brinell Tester 3000D
- Karl Deuth Crack detector
- Pangborn Rotoblast ShotBlast (x2)
- Crackdetectors (x2)
- Hardness Tester Model: 40UR
- Universal Tensing machine. Shimadzu
- Pendulum Impact tester. Karl Frank
- Imptech Grinder Polisher
- Microscope with Digital Camera Nikon
- Abrasiart Cutter
- Compressors (x2)
- Demin Water Plant 6Cubic Metre Per Hour
- Ingersoll Rand Air Drier
- Diesel Generator -150 KVA
- GEA Cooler for closed loop water system
- Cooling system with plate cooler
- Company vehicles incl. Toyota Hilux LDV, Toyota Carri P/van (x2), Toyota Tazz 1.3, Diesel Forklift 2.5T.

100+ lots, see full list online.

Martin: 083 264 1646

Office: 021 204 0599

whauctions.com

WH Auctioneers Cape (Pty) Ltd

Rules of auction comply with section 45 of the Consumer Protection Act, Act 68 of 2008.



LIQUIDATION AUCTION SABIPOINT (Pty) Ltd (In Liquidation)

Masters reference No: T1052/17

THU 2 APRIL @ 11H00

The Water Club, Beach Road, Granger Bay

VIEW: BY APPOINTMENT

DEPOSIT TO BID:

R50,000 Refundable. FICA required



Cape Town **WATERCLUB APARTMENT**

3 Bedroom, 2 Bathroom
Apartment in Security Complex
with underground parking.

Sea Views, walking distance to
V&A Waterfront.

See website for more information & bidders pack or call.

Martin 083 264 1646 • Office 021 204 0599

whauctions.com

WH Auctioneers Cape (Pty) Ltd.

Rules of auction comply with section 45 of the CPA, Act 68 of 2008.

