

AUCTION CATALOGUE

CONCRETE 4 U & CONCRETE 4 U LOGISTICS (IN BUSINESS RESCUE)



**CONCRETE
4U**
quality assured

5 NOV
PORT ELIZABETH



WHAUCTIONS.COM

Guideline for the auction



Bid on Webcast at
www.whauctions.com

Note: Your bid excludes buyers premium, Natis fee & VAT. This will be added to your bid amount when invoiced.

Register at the auction or on www.whauctions.com to bid online.

Call Zelda 021 204 0599 or email zeldat@whauctions.com for registration forms & banking info

AUCTION DATE: Tuesday 5 November (10h30)

VIEW: Monday 4 November

ADDRESS: Markman Road, Markman Industrial, Port Elizabeth

TO BID: R25,000 Refundable deposit (EFT only) & FICA Docs.
 International bidders: R100,000 / \$8,500

BUYERS PREMIUM: 10% Live bidding / 12% Webcast bidding

VAT: 15%

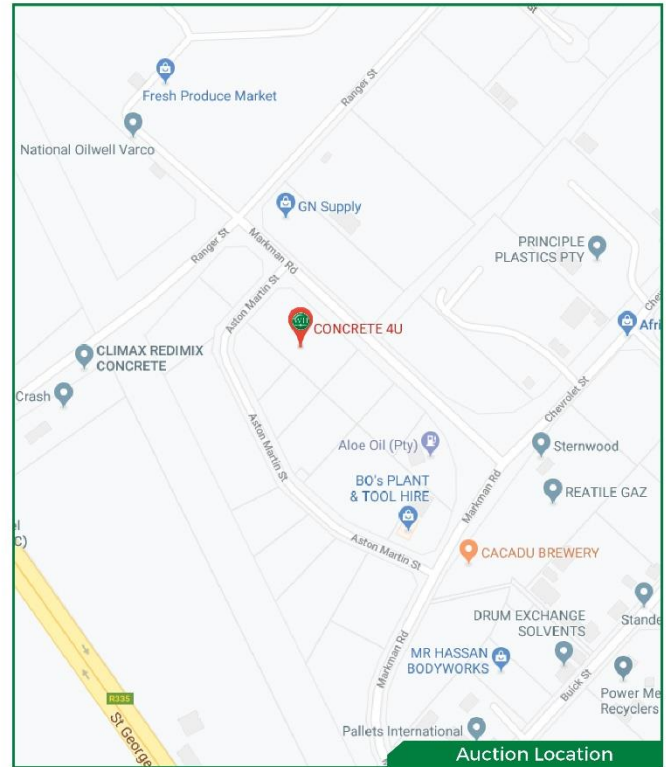
OTHER FEES: Cash deposit fee: 2%. Natis fee per vehicle (if applicable): R2100.00 including VAT.

PAYMENTS: Invoices are issued immediately after the auction & must be settled in 24 hours.

DISPATCH: **Collection by no later than 3pm Fri 8 November.**
 No exceptions. Rigging, dismantling & safety is the buyers responsibility.

INFO: Martin Dibowitz 083 264 1646

REGISTRATION FORMS: Zelda 021 204 0599 / zeldat@whauctions.com



NOTICE TO BIDDERS:

To bid, a refundable registration deposit & Fica documents will be required. Bidding will not be approved unless all necessary documents are completed. Bids exclude Buyers Premium, any applicable Fee's (such as vehicle Natis doc fees) & VAT - this will be added on your invoice). Webcast bidders can pre-bid online as soon as you are registered.

All printed information regarding this sale is merely a guide, subject to change and neither the auction company, sellers or publishers shall be liable for any errors in this brochure. E&OE.

Know what you're bidding on!

Inspect goods personally before bidding. This brochure is merely a guide, contact our offices or visit our website for final auction catalogues.



WesBank

PRE-APPROVED FINANCE

af AUCTION FINANCE

Apply for pre-approved bank finance on qualifying lots.

Call now:

Tamara 078 842 3235



www.whauctions.com

4 **Karoo Batch Plant**
Aston Martin Drive, Markman Tsp, Swartkops, PE. **Markman Plant A** Includes Aggregate Bins And Scale System, Transfer Belt and Conveyors, 2 x Silos, Batchroom Container and Batch System Controls



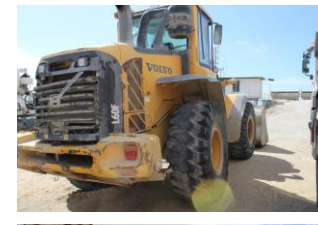
12 **2015 HRK544EC UD Mixer N558 CWE330 E22**
6x4 Quester Mixer
VIN: JPCZY0D0FS800105
Engine: GH11414376
Asset No.: M61



5 **2014 HHP794EC FAW 35.340 FC 8 Cube Concrete Mixer**
Kilometers: 9085
VIN: LFNFXNV3EAD05515



13 **2009 FHV402EC Volvo L60 Front Loader**
VIN: VCEOL60FA00005091
Engine: 10678318
Asset No.: L15



6 **2016 HSL852EC UD CGE370 Quester Mixer**
VIN: JPCZM30G0FS800126
Engine: GH11354089
Asset No.: M63



14 **2012 FWS735EC Mercedes Benz Axor 2628B/33 Mixer**
VIN: WDB9536416L650984
Engine: 90692600958407
Asset No.: M84



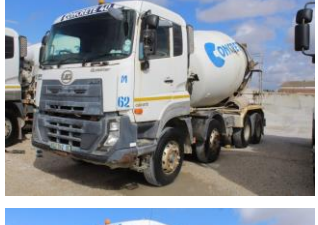
7 **2017 JBY036EC UD CGE370 8x4 Rigid Mixer**
VIN: JPCZM30G2GS800307
Engine: GH11361595
Asset No.: M66



15 **2011 FPS789EC Mercedes Benz Axor 2628B/33 Mixer**
VIN: WDB9536416L524122
Engine: 90692600877560
Asset No.: M82



8 **2016 HSL862EC UD CGE370 Quester Mixer**
VIN: JPCZM30G2FS800127
Engine: GH11354126
Asset No.: M62



16 **2014 HHP792EC FAW 35.340 FC 8 Cube**
Concrete Mixer
VIN: LFNFXNV3EAD05515
Engine: WD615691514C001531
Asset No.: M27



9 **2017 HZP562EC UD CGE370 8x4 Rigid Mixer**
VIN: JPCZM30G0GS800306
Engine: GH11361810
Asset No.: M65



17 **Trailer Step Deck**
No Plates



10 **2012 FWC917EC Mercedes Benz Axor 2628B/33 Mixer**
VIN: WDB9536416L637309
Engine: 90692600951815
Asset No.: M85



18 **2016 HSL855EC UD CGE370 Quester Mixer**
VIN: JPCZM30G4FS800128
Engine: GH11354119
Asset No.: M64



11 **2009 FFG224EC Volvo L60 Front Loader**
VIN: L60EV3275
Engine: 10258164
Asset No.: L14



19 **CCC7939 Tip Trailer Rear**
VIN: AA9A340MA4RKR1637



20	<p>2001 CTY415EC Tri-Axle Lowbed</p>
21	<p>2013 DVN691EC SDLG Wheel Loader VIN: VLG0958LCC9015667 Engine: 6CTA887667157 Asset No.: L16</p>
22	<p>2014 HHP789EC FAW 35.340 FC 8 Cube Concrete Mixer VIN: LFNFXNV6EAD05511 Engine: WD615691514CD001536 Asset No.: M25</p>
23	<p>2012 FWG509EC Mercedes Benz Axor 2628B/33 Mixer VIN: WDB9536416L650982 Engine: 90692600958383 Asset No.: M83</p>
24	<p>2005 CYZ669EC Mitsubishi Colt 2000i Hi-Line LWB P/US/C VIN: ABJK62ENR3E043583 Engine: 4G63HM9003 Asset No.: B05</p>
25	<p>1999 CCZ171EC Toyota Hilux 2000 SR P/US/C VIN: AHT31LMK208003346 Engine: 5L4718184 Asset No.: B08</p>
26	<p>2008 FBS016EC Mitsubishi Colt LDV Asset No.: B07</p>
27	<p>2012 FVS069EC Toyota Hilux 2.5D-4D P/US/C VIN: AHTCS12G807579174 Engine: 2KD5694677 Asset No.: B20</p>



28	<p>2011 FSF687EC Toyota Hilux 2.5D-4D PUS/C VIN: AHTCS12G607566357 Engine: 2KD5426586 Asset No.: B19</p>
29	<p>2016 HTL232EC Toyota Hilux S/C 2.4 GD AC VIN: AHTEB6CB402502260 Engine: 2GD0155312 Asset No.: B29</p>
30	<p>2016 HRW683EC Toyota Hilux SC 2.5D-4D RV SRX V06 VIN: AHTCR32G008032496 Engine: 2KDA891606 Asset No.: B27</p>
31	<p>Markman B Plant Includes Aggregate Bins And Scale System, Transfer Belt and Conveyors, 3 x Silos, Batchroom Container and Batch System Controls</p>
32	<p>2014 HGB981EC FAW 35.340 FC 8X4 8 Cube Concrete Mixer VIN: LFNFXNV9DAD19546 Engine: WD615691513S008607 Asset No.: M23</p>
33	<p>1983 DXK121EC Mercedes Benz Flatbed with Crane VIN: MC0010375A0239531 Engine: 36000324135133 Asset No.: F01</p>
34	<p>2003 CYB741EC Toyota Hilux 3.0 KZ-TE Raider R/BP/US/C VIN: AHT31GNK008009918 Engine: 1KZ0950836 Asset No.: B12</p>
35	<p>Cummins Marelli Alt 132Kva Silent Skidbase Mount</p>



36 **Blue Mobile Hydraulic Pump on Trailer**



37 **White Trailer with Duviz Aircooler Meter**



38 **2007 FKR415EC Generator On Trailer**
Engine: 08AW00700950
Asset No.: T06



39 **2007 DTP004EC Isuzu KB250C**
VIN: ADMTFR54S5F388019
Engine: 4JA1471720
Asset No.: B03



40 **2007 DVW691EC Volvo Wheel Loader**
VIN: L60E2952
Engine: 10130913



41 **Markman C Plant**
Stock & Machinery, Operating Equipment, Cables Computers, Software and Any Other Contents, Accessories, Tools, Plant & Equipment, Silos & Accessories and Container



42 **2011 FNL082EC Opel Corsa Utility Club 1.4I**
VIN: ADMXF80JG84552243
Engine: 6W0121348
Asset No.: B28



43 **Port ST Johns Plant**
Stock & Machinery, Operating Equipment, Cables Computers, Software and Any Other Contents, Accessories, Tools, Plant & Equipment, Silos & Accessories and Container



44 **Umtata Plant**
Stock & Machinery, Operating Equipment, Cables Computers, Software and any other Contents, Accessories, Tools, Plant & Equipment, Silos & Accessories and Container



45 **2010 FKR156EC Mercedes Benz Axor 2628B/33 Mixer**
Location - Umtata
VIN: WDB9536416L462570
Engine: 90692600832140
Asset No.: M80



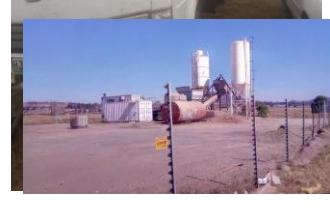
46 **2011 FPK443EC Mercedes Benz Axor 2628B/33 Mixer**
Location - Umtata
VIN: WDB9536416L524124
Engine: 90692600877565
Asset No.: M81



47 **2014 HJX693EC FAW 9.130 FL 4 Ton Truck**
Location - Umtata
VIN: AAK9130FLDA021024
Engine: CA4DF21352166993
Asset No.: F03



48a **Sterkspruit Plant**
Stock & Machinery. Operating equipment, Cables Computers, Softwares, and any other Contents, Accessories, Tools, Plant & Equipment, Silos & Accessories and Container



The following lots are located at **Wagons Drift Industrial Park, Perseverance Road, Off R367, Perseverance**

49 **Chassis + Cement Drum**



50 **Assorted Scrap Inch Compressors**



51 12 x 2.5 Container Store Ass Electric Motors
Spares Hyphoir, Pipes as Per Pic + Outside



60 Blue Grinder Pedestal



53 Work Benches



61 Floor Jack



54 Lincoln Powertec 250L Welder



62 Actylene Glass Carts, Hose Gauges + Torch



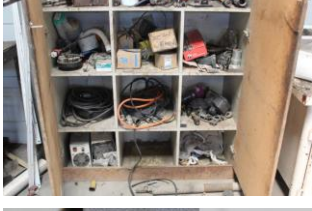
55 Cut Off Grinder



63 Electric Fan



56 Cabinet + Contents



64 Engine Hoist



57 Pedestal Drill Press Green/Gray



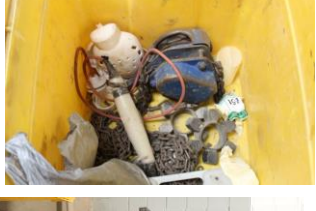
65 Transmission Jack



58 Rexon Drill Press



66 Chain Hoist



59 Ryobi Grinder Pedestal



67 Hydraulic Press



68 Hydraulic Floor Jacks



76 Hawkins Bait Charger



69 Incomplete Porta Power



77 Ass Jacks + Jack Stands



70 Gas Trolley



78 Cage Mount Compressor W/Sheep



71 2 x Steel Cabinet + Contents



79 Grease Pods



72 Nat Weld Inverter 200



80 Trade Air Part Compressor



73 Trolley & Contents



81 Worth Cabinets + Contents



74 Mobile Steps



82 Steel Cab + Contents



75 Mobile Gantry



83 Honda W/Pump



84 Schubb Safe & Keys



85 Desk + Chair



86 Steel Cab + Ass Tol



87 2 x Steel Cabinet + Contents, 2 x Spray Guns
1 x Shelf



88 Steel W/Bench with Vise



89 Steel Table + 5 Plastic Chairs



90 2 x Electric Fans



91 Wood Desk Drawer



92 Contents of Store Consumable + Spares



93 Contents of Store Consumable + Spares



94 Elec Motors Recon



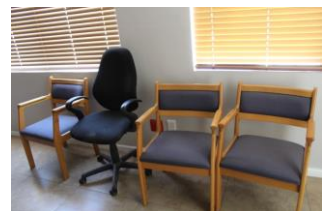
95 Port Pressure Washer



96 Office + Contents



97 4 Chairs, 1 x White Board + F/Cabinet,
1 x Red Sofa



98 6 x Chairs, 1 x Table



99 Microwave + Kettle

