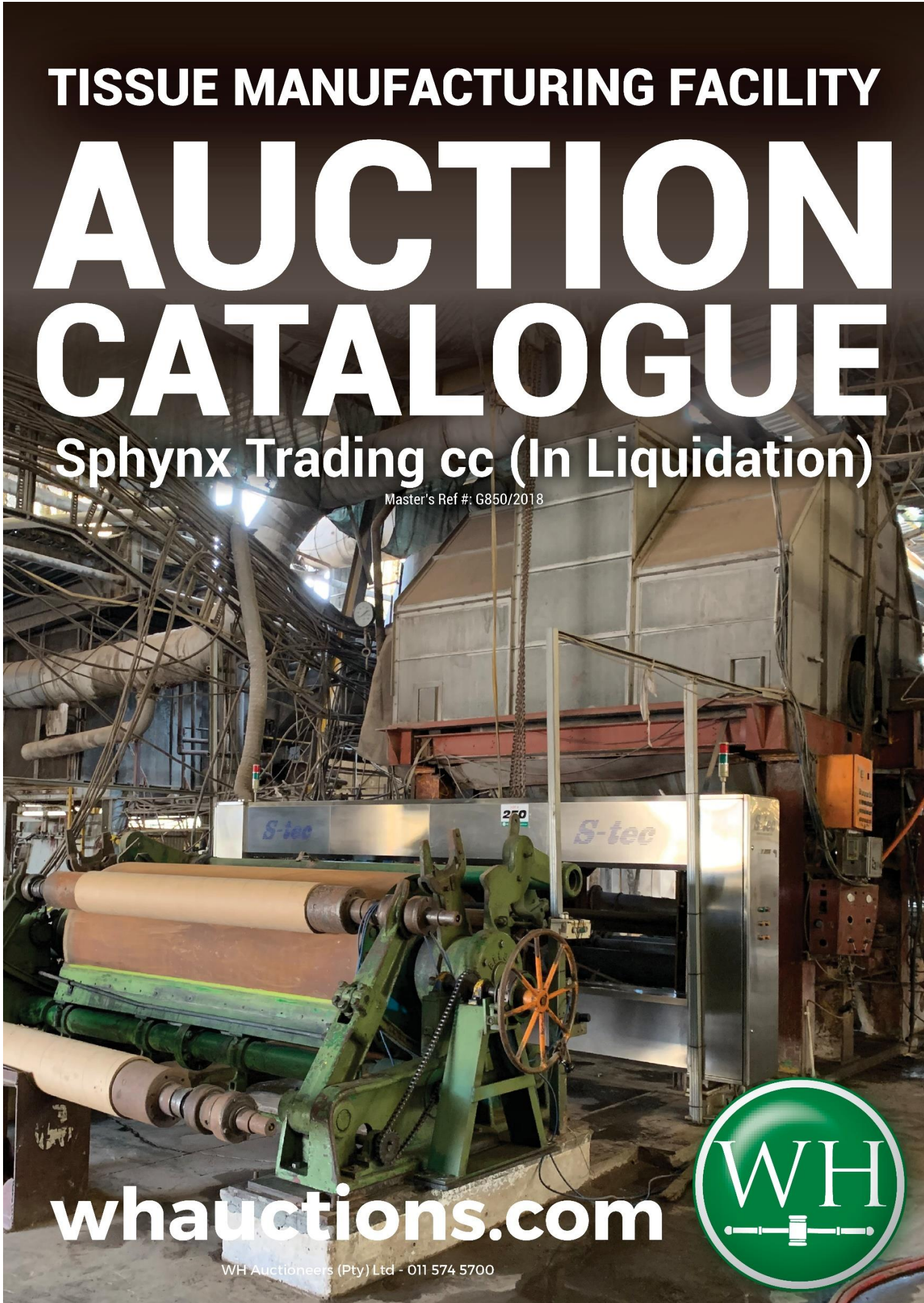


TISSUE MANUFACTURING FACILITY

# AUCTION CATALOGUE

Sphynx Trading cc (In Liquidation)

Master's Ref #: G850/2018



[whauctions.com](http://whauctions.com)

WH Auctioneers (Pty) Ltd - 011 574 5700



# Guideline for the auction



For up-to-date lists or to bid online:  
**whauctions.com**

**Register at the auction or on [www.whauctions.com](http://www.whauctions.com) to bid online.**

For registration forms & banking info, call **011 574 5700** or email **info@whauctions.com**

Note: Your bid excludes buyers premium, Natis fee & VAT. This will be added to your bid amount when invoiced.

**NOTICE TO BIDDERS:**

To bid, a refundable registration deposit & Fica documents will be required. Bidding will not be approved unless all necessary documents are completed. Bids exclude Buyers Premium & any applicable Fees such as vehicle Natis doc fees & VAT, this will be added on your Invoice. Webcast bidders can pre-bid online as soon as you are registered.

All printed information regarding this sale is merely a guide, subject to change and neither the auction company, sellers or publishers shall be liable for any errors in this brochure. E&OE.

**Know what you're bidding on!**

This catalogue & lot descriptions is a guide to the items on auction. Inspect goods personally on view days before bidding on an item. You cannot cancel bids after the auction.

## 2-DAY AUCTION

BID LIVE OR ONLINE VIA WEBCAST

**AUCTION DAY 1: TUE 3 SEPTEMBER (10H30)**  
22 Ashenberg Street, Chamdor, Krugersdorp

**AUCTION DAY 2: WED 4 SEPTEMBER (10H30)**  
108 Main Street, Ga-Rankuwa Industrial

**VIEW:** Monday 2 September (both sites)

**TO BID:** R25,000 Refundable deposit (EFT only) & FICA Docs.

**BUYERS PREMIUM:** 10% if bidding live / 12% if bidding via Webcast

**VAT:** 15%

**OTHER FEES:** An admin fee of 2% will be levied on all cash deposits made into our account.  
Natis fee per vehicle: R2100.00 including VAT.

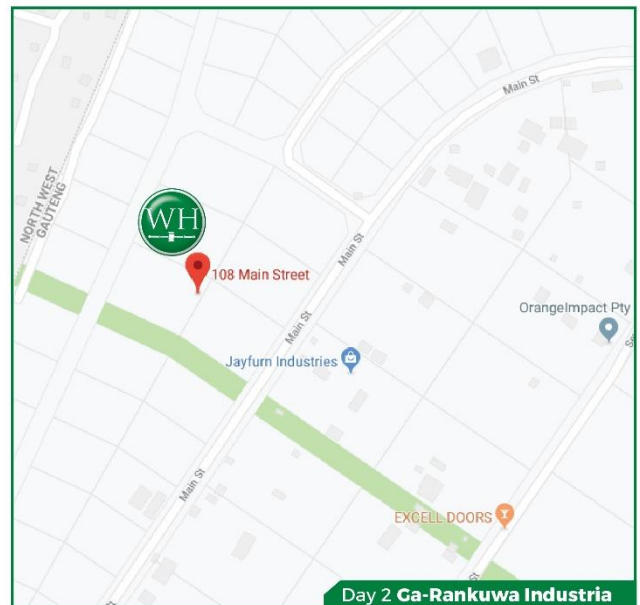
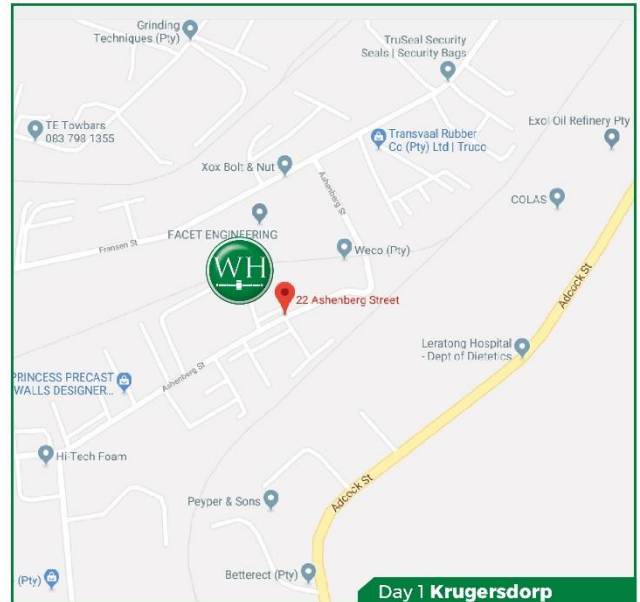
**PAYMENTS:** Invoices are issued immediately after the auction & must be settled in 24 hours.

**DISPATCH:** 7 Days after auction, excl. weekends & holidays. Rigging, dismantling & safety is the buyers responsibility.

**INFO:** Kim 082 460 5989

**REGISTRATION HELP:** 011 574 5700 / info@whauctions.com

**AUCTIONEER:** Shannon Winterstein



Bank finance

Anton : 083 790 0090

PREFERRED SERVICE PROVIDERS



Transport

Rob : 011 609 3005



Cargo freight & clearance

Kumarie : 061 734 7394

# DAY 1

22 Ashenberg Street, Chamdor, Krugersdorp  
(Lot # 1 to 199)

1	<p><b>Two Ply Trimming Sealing, Embossing Perforator and Re Winder, Bundler and Band Saw</b></p>		6	<p><b>Work Benches</b></p>	
2	<p><b>Lyish Log Feeder with Feed Conveyor</b></p>		7	<p><b>Dismantled Monza Rewinder Length- 2.7 Meters</b></p>	
3	<p><b>Four Lane Log Cutter with Feed Conveyor</b></p>		8	<p><b>Band Saw</b></p>	
4	<p><b>Baosuo Two Ply Trimming, Sealing, Embossing Perforator and Rewinder Length- 2.7 Metres</b></p>		9	<p><b>Fabio Perini Rewinder Length- 2.7 Meters</b></p>	
5	<p><b>Uncut Toilet Paper Rolls</b></p>		10	<p><b>No Name Small Silent Generator (Green)</b></p>	
			11	<p><b>Ingersol Rand R751 Compressor with Receiver Tank</b></p>	
			12	<p><b>ABC Compressor with Air Dryer and Receiver Tank</b></p>	

13	Band Saw		20	Mitsubishi FD18 1.8 Ton Fork Lift	
14	Lyish Rewinder Length- 1.9 Meters		21	15 x Assorted Steel Work Benches	
15	Band Saw		22	Stainless Steel Trolleys	
16	Lyish Rewinder Length- 2.7 Meters		23	MSB Kavafakis Pneumatic Automatic Converting Tissue Paper & Packaging Machine	
17	Band Saw		24	Four Lane Log Cutter	
18	Fabio Perini Rewinder Length- 1.9 Meters		25	MSN Kavafakis Pneumatic Automatic Packing Machine	
19	Band Saw		26	Four Lane Log Saw	

27	<b>Fabio Perini Rewinder</b> Length- 2.7 Meters		34	<b>Two Ply Trimming Sealing, Embossing Perforator and Rewinder, Bumbler and Band Saw</b>	
28	<b>Dismantled Tender Rewinder &amp; Small Band Saw</b> Length- 2.7 Meters		35	<b>Steel Work Benches</b>	
29	<b>Unprocessed Roll for Toilet Paper</b>		36	<b>Fabio Parini Automatic Rewinder (No Accumaltor)</b> Length- 2.7 Meters	
30	<b>1000l Plastic Tanks</b>		37	<b>Fabio Perini Two Lane Cutter</b>	
31	<b>Log Saw (Stripped)</b>		38	<b>Echo Two Lane Tender Log Cutter</b>	
32	<b>Wadkins Band Saw</b>		39	<b>Fabio Perini Automatic Rewinder with Accumulator</b> Length 2.9 Metres	
33	<b>Fair Pack Shrink Tunnel (Stripped)</b>		40	<b>Assorted Tissue Rolls</b>	

41	1000l Plastic Tanks with Pumps		48	Rewinder Rollers	
42	Fabio Perini Core Winder		49	Garage Roll Automatic Paper Roll Machine Possibly Incomplete (Dismantled)	
43	Lyish Core Winder		50	Atlas Copco GA37 Stationary Compressor with Receiver Tank	
44	No Name Core Winder Stripped		51	Ingersoll Rand Type 30 Stationary Compressor	
45	Assorted Spares Parts, Tooling and Shelving for Machinery		52	Stripped Compressor	
46	Contents of 2 Offices		53	Boiler Room Including: John Thomson Coal Fried Boiler, Water Softening Plant, Steel Water Holding Tank, Atlas Copco Silent Generator and a Stripped Workshop Compressor	
47	Platform Scale		54	Nissan Diesel Forklift with Loader Bin	

55

**Paper Plup Plant Including:**  
Incline Conveyor Puppet,  
Clean Chest Pump, Dump  
Chest, Turbo High Density  
Cleaner, 3 Water Tanks,  
Krofta and a Rotrams which  
is NOT Operational



60

**Rewinder Rolls**



61

**Assortment of Steel  
Components**



62

**Pumps**



56

**Paper Mill**  
**Including:** Sub-Station and Cabling, Refiner Feed Tank,  
Pressure Screen, First Stage Pump, Two Cleaners, Head Box  
Pressurized by Fan Pump, De-Water Wire Conveyor with  
Forming Boards, Pick Up Shoe, Felt Vacuum, Suction Press,  
Yankie Dryer, Pulp Reel, Two Vacuums, Spare s Motors &  
Components

63

**Pipe Thredder**



57

**Reels of Paper**



64

**Workshop Lathe**



58

**Large Assorted of Used  
Motors**



65

**Assortment Steel Shelving  
with Used Steel Componen**



59

**Toyota LPG 2.5 Ton Forklift  
(Damaged)**



66

**Pedestal Grinder, Cut Off  
Saw, Pedestal Grill  
and Workbench**



67	Pan & Box Folder		74	Contents of Papermill Offices & Store Room	
68	Tool cabinets, Ladders, Office Furniture Work Benches with Vices		75	Jungheinrich 1.2 Ton Electric Forklift	
69	200L Tanks with Unknown Chemicals		76	Mill Roller	
70	Lot Core Rolls		77	Contents of Office 1	
71	Platform Scales		78	Contents of Office 2	
72	Rolls of Assorted Paper		79	Contents of Office 3	
73	Hydraulic Bailer		80	Contents of Office 4	

81	<p><b>Contents of Office 5</b></p>		<p><b>2012 BV20NGBP Tata 407 Turbo</b></p>	
82	<p><b>Content of Downstairs Offices, Office Furniture</b> Automation of all Downstairs Offices</p>		<p><b>2012 BV20NZGP Tata 407 Turbo</b> Insulated Body Truck Kilometers: 212348 VIN: MAT357522B8R38996 Engine: 497SPTC35JYY645705</p>	
83	<p><b>Assorted Pallet Jacks</b></p>		<p><b>2012 BV20NGGP Tata 407 Turbo</b> Insulated Body Truck Kilometers: 263930 VIN: MAT357522B8R28824 Engine: 497SPTC35GYY633980</p>	
84	<p><b>Rhino Heli 2.5Ton Forklift Stripped</b></p>		<p><b>2006 STB892GP Tata LPT 7135 Flat Deck</b></p>	
85	<p><b>Toyota 2.5Ton Stripped Forklift</b></p>		<p><b>2010 ZNR402GP Tata SFC 4072 Ton Truck</b> with Insulated Body Truck VIN: MAT357522A8R01480 Engine: 497SPTC35A2Y600590</p>	
86	<p><b>Scrap Metals &amp; Tyres</b></p>		<p><b>2012 BV20MTGP Tata 407 Turbo</b></p>	
87	<p><b>2011 BP03TCGP Tata SFC 407 Turbo</b> Insulated Body Truck Kilometers: 195763 VIN: MAT357522B8R12846</p>		<p><b>2014 DB01JLGP Isuzu NQR 500 Smoother</b></p>	

95	<p><b>FN23MGGP Single Axle Cage Trailer</b> VIN: AA9T2223TM2JAE2251</p>		102	<p><b>2008 BZ45ZDGP Quad Trailer</b></p>	
96	<p><b>CC65SLGP Dura Double Axle Box Trailer</b> VIN: AA9B225BMCKVL11036</p>		103	<p><b>2012 BZ45YRGP Double Axle Box Trailer</b></p>	
97	<p><b>2008 CB93RYGP Thule Trailer 2300S</b></p>		104	<p><b>BH26CGGP Tata 407 Turbo with Insulated Body</b> VIN: MAT357522A8R29312</p>	
98	<p><b>KNR381GP Toyota Hilux 1800</b> VIN: YN510032033 Engine: 2Y9044220</p>		105	<p><b>BH26BWGP Paramount Interlink Trailers</b> VIN: AA9G227MA5AKA1355</p>	
99	<p><b>FL88MMGP Single Axle Cage Trailer</b> VIN: AA9T175003JAE2335</p>		106	<p><b>2010 ZNR377GP Tata SFC 407 with Insulated Body Truck</b> Kilometers: 236101 VIN: MAT357522A8R01959</p>	
100	<p><b>CZ14BBCGP Volkswagen Citi Chicco</b> VIN: AAVZZZ172VU009194 Engine: GY128732</p>				
101	<p><b>2011 BH26CGGP Tata SFC 407 Turbo Insulated Body Truck</b> Kilometers: 174164 VIN: MAT357522A8R29312</p>				

# DAY 2

108 Main Street, Ga-Rankuwa Industrial  
(Lot # 200 and above)



200

**Decommissioned Machinery including:**  
Toilet Face Folder, Decoilers, Coils, Saw



201

**Electric Cement Mixer**



202

**Assorted Scrap Metal**



203

**Paper Rolls**



204

**TC Toilet Paper Production Line**

205

**Cardboard Core Production Line with Decoilers**



206

**Decommissioned Wrapping Line & DB Board**



207

**Toilet Towel Production Line Components**



208

**Toilet Paper Production Line**



- 209 Lot Assorted Tanks, DB Boards & Parts
- 210 Lot Assorted Paper
- 211 Lathe & Pedestal Grinder
- 212 Hydraulic Pump & Motors
- 213 Roll of 4 Core Cable
- 214 Hayssen Packaging Machine



- 215 Alberto Condonato Toilet Paper Production Line
- 216 Powerlift 2 Ton Hoist with Beam
- 217 Lot Assorted Scrap Paper
- 218 Ingersol Rand Compressors
- 219 Lot Assorted Scrap Metal, Beams & Gantrys



- 220 Farm Implement
- 221 Stational Compressor with 2 Receiver Tanks
- 222 GEC Induction Motors
- 223 Lot Assorted Cables
- 224 Lot Assorted Electric Motors
- 225 Lot Assorted Racking & Contents
- 226 Lot Assorted Miller Welder, Tonco Welder, Small Jack, Thickener, Borehole Pump



- 227 Lot Assorted Office Furniture, 2 x Scales & Oven
- 228 Lot of Henkel Glue
- 229 Lot of Plastic Rolls
- 230 Pallets of Toilet Rolls
- 231 Single Axle Trailer (No Papers)
- 232 Lot Assorted Scrap Metal
- 233 Lagun F12 Milling Machine



- 234 520S Centre Lathe
- 235 Lot Assorted Metal Hack Saw, Steel Bench, H Frame Press and Shelf with Contents
- 236 630kVA Republic Transformer & GEC Power Distributor
- 237 Lot Assorted Engine Hoist & Pipes
- 238 Lot Assorted Belts, DB Board, Valves, Custom Roller
- 239 Contents of Store including: Shelves, Tools, Cable, Bearings Etc.
- 240 Roller



- 241 Electric Motors
- 242 Lot Assorted Incline Conveyor, 2 x Stainless Steel Tanks, 2 x Water Pumps
- 243 Siat Pallet Wrapper
- 244 DB Panel (Stripped)
- 245 Weigh Bridge
- 246 Ingersoll Rand Screw Compressor with Receiver Tank
- 247 Yellow Steel Holding Tanks



**248 Diesel Tanks**



**249 Storage Container & Pump**



**250 Toilet Paper Mill**

**251 Mitsubishi 2.5 Ton Forklift**



**252 Platform Scale**



**253 Boiler (Stripped)**



**254 Boiler (Stripped)**



**255 Boiler (Stripped)**



**256 Lot Assorted Machines (Stripped)**

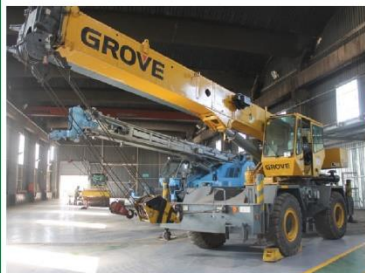




# DISPOSAL OF NON-CORE ASSETS

**AUCTION: WED 11 SEP** at Aveng Park - 1 Jurgens Street, Jet Park, Boksburg

**View:** Mon 9 & Tue 10 September. **Deposit:** R50,000 (EFT only). Fica docs required.



Duly instructed by management, WH will sell by public auction:

## CRANES, ROAD CIVILS, TRUCKS, CONSTRUCTION MACHINERY & PLANT

### MOBILE CRANES

- 2002 Kobelco BM500 50Ton Hydraulic
- 1995 Kobelco 7055-2 50Ton
- 1998 Tadano TR250M-6 25 Ton Rough Terrain
- 2008 Tadano TR250M-6 25 Ton Rough Terrain
- 2006 Grove RT530E 30 Ton Rough Terrain (x2)
- 2007 Grove Rough Terrain
- Grove RT530E 30 Ton Rough Terrain
- 2009 Grove RT540E 40Ton Rough Terrain (x2)

### EXCAVATORS

- 2011 Caterpillar 320DL
- 2015 Komatsu PC300-8
- 2011 Caterpillar 336D LME (x3)
- 2014 Komatsu PC400-8 (x2)

### ROAD MACHINES

- 2010 Voegel Super 1803-2 Paver
- 2013 Voegel S1800-2 Spray Jet Paver
- 2006 Dynapac F150C Paver

### GRADERS

- 2008-2000 Caterpillar 140H's (x5)
- 2010 Bell 770G

### TRUCKS

- 2010 Isuzu NQR500
- 2010 Mercedes Benz 1726/59
- 2010 Toyota Hino 500 1626 Dropside
- 2010 Isuzu NPR400 Dropside Truck
- 2007 Toyota Dyna 4.5Ton
- 2008 Mercedes Benz 7Ton Truck
- 2008 Mercedes Benz Atego 1323 Dropside
- 2008 Mercedes Benz Atego 1323 Dropside
- 2007 Nissan UD80
- 2007 MAN 15.220BB Crane
- Mercedes Benz 2628B/33 Truck Pump
- 2009 MAN TGA 32.350 Truck
- 2011 Hino 300-814 LWB 4Ton
- Toyota Service Truck
- 2006 Bell B20D Water Truck
- 1995 Mercedes Actros 12,000L Tanker
- 2000 Mercedes Actros 3331 Tanker (x2)

### BUSES & MINI-BUSES

- 2007 Mercedes Benz 115CD Vito Bus
- 2017-2009 Toyota Quantum Buses (x5)
- 2008 Mercedes Benz Sprinter 15 Seater Bus
- Isuzu NQR500 32 Seater Bus
- Mercedes Benz 1730 66 Seater Bus
- 2010 Hino 500-1626 Bus

### HORSES

- 2009 Nissan UD460WT Horse
- 2007 Mercedes Benz 2035 Actros
- 2011 MAN TGS33.480 6x4 Horse
- 2007 Mercedes Benz 3350 Actros
- 2009 Mercedes Benz 3350S/33 Actros

### TIPPERS

- 2016 Mercedes Benz 2628B/33CK (x3)
- 2011 Mercedes Benz Axor 3335K/36CK

### CEMENT MIXERS

- 2016 Mercedes Benz Axor 2628B/33 (x3)

### DOZER, ADT & TLB

- 2015 Komatsu D65EX-16 Bulldozer
- 2010 Caterpillar 730 6x6 ADT
- 2015 JCB 3CX 4x4 TLB

### TELEHANDLERS & SKIDS

- 2010 Bobcat T40170 Telescopic
- 2008 JCB 540-170 Loadall
- 2006 JCB 535-140
- 2008 Manitou MT1840
- 2016 JCB 540-170
- 2011 Bobcat Kroomdraai Skid Steer
- 2008 Case 430 Skid Steer

### ROLLERS

- 2009 YTO LPT2030H Pneumatic (x3)
- 2005 Hamm HW90/10 3-Wheel
- 2009 Hamm HW90B/12 3-Wheel (x2)
- 2009 Hamm HD75 Tandem
- 2017 Hamm HD75VV Tandem
- 2014 Bomag BW212 Vibrating (x2)
- 2004 Bomag BW219-DH
- 2014 Bomag BW213-DH-4 (x2)
- 2006 Bomag BW226-D14 BVC

### BROOMS

- 2009 Tenant M20 Broom
- 2010 Broce RJ350 Powered Broom (x5)

### SCREENS

- Powerscreen Warrior 1800 Mobile Screen
- 2013 Powerscreen Chieftan 2100 Mobile Screen

### FORKLIFTS

- 2007 Mitsubishi Diesel Forklift
- 2003 Linde 4.5Ton 4m Forklift
- 2008 Hyster 5 Ton Diesel Forklift

### TRACTORS

- 2007 Holland
- 2011 Massey Ferguson MF480 4FWD (x2)
- 2004 Bell 2306D (x2)

### OTHER...

- Various Concrete Pumps, Concrete Dumpers, Pressure Washers, Compressors, Engineering machinery & Workshop tools
- Various Shipping Containers & Site offices
- Diesel Generators 800-60KVA (x12)
- 2011 Container 25 000L Diesel Tankers (x8)
- 250, 100 & 50 Ton Cement Silos (x9)
- 1000 Litre Diesel Bowzers (x9)
- Various Truck Trailers
- Toyota, Nissan, Opel LDV's (x70)
- Toyota Avanza, Yaris & Corolla Sedans (x10)

**AND MUCH MORE!**  
**SEE WEB OR CALL FOR CATALOGUE**  
\* Above list is subject to change



**BID LIVE OR ONLINE**

See full list on:

**whauctions.com**

Our rules of auction comply with section 45 of the CPA, No. 68

**Vicki: 084 323 5000**  
**Wihan: 084 253 5000**  
**Office: 011 574 5700**