

# AUCTION CATALOGUE CATALOGUE CATALOGUE

THURSDAY 28 FEBRUARY @ 10H30 - 17 DACRES AVE, EPPING2, CAPE TOWN



[whauctions.com](http://whauctions.com)

WH Auctioneers Cape (Pty) Ltd | Tel: +27 212040599 | Email: [martind@whauctions.com](mailto:martind@whauctions.com)

# Guideline for the auction



**Bid on Webcast at**  
**www.whauctions.com**

**NOTICE TO BIDDERS:**

Please ensure that you read & understand the complete rules of auction document when you register for any auction. Please inspect goods on viewing day & know what you're bidding on. Bids can not be cancelled after the auction. You bid excludes Buyers Premium & VAT (will be added on your Invoice).

In compliance with the CPA (Consumer Protection Act), clients wishing to register for our auctions are required to complete the registration form and sign/accept the Rules of Auction. The following apply to our Rules of Auction:

This highlights brochure for this auction sale is merely a guide, subject to change and neither the auction company or sellers shall be liable for any errors in this document.

**Please inspect goods on Viewing Day when the final auction catalogue will be available.**

**AUCTION DATE:** Thursday 28 February at 10h30

**VIEW:** Wednesday 27 February (9am to 4pm)

**ADDRESS:** 17 Dacres Avenue, Epping 2, Cape Town

**TO BID:** R25,000 Refundable deposit (EFT only) & FICA Docs.  
 International bidders: R100,000 / \$8,500

**BUYERS PREMIUM:** 10% Live bidding / 12% Webcast bidding

**VAT:** 15%

**OTHER FEES:** Cash deposit fee: 2%. Natis fee per vehicle (if applicable): R2100.00 including VAT.

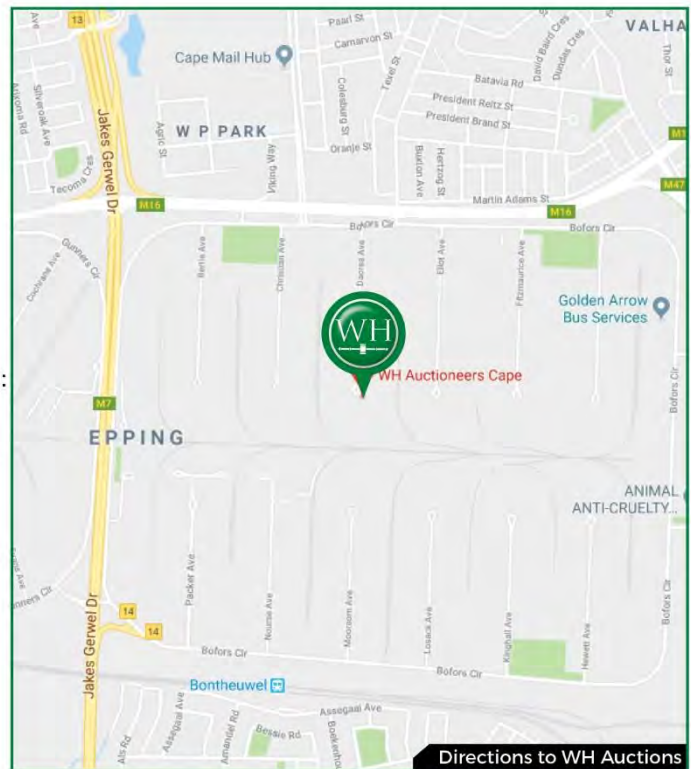
**PAYMENTS:** Invoices are issued immediately after the auction & must be settled in 24 hours.

**DISPATCH:** 7 Days after auction, excl. weekends & holidays.  
 Rigging, dismantling & safety is the buyers responsibility.

**INFO:** Graeme 084 200 6272

**REGISTRATION:** Zelda 021 204 0599

**AUCTIONEER:** Martin Dibowitz 083 264 1646



Directions to WH Auctions



**PRE-APPROVED FINANCE**



WH has teamed up with **AuctionFinance** to provide bidders with pre-approved bank finance on qualifying lots. Call now for tailored finance deals.

**Mathilda 082 337 2210**



www.whauctions.com



The auctioneers are not responsible for any errors or discrepancies in descriptions. All goods sold as-is – no duty to repair. Odometers & hour readings not verified. E&OE.

**1**  
**1988 CJ2415 Isuzu FSR F6500D Dropside Truck**  
 Kilometers: 437637  
 VIN: FSR49KR408890SMBG  
 Engine: MB02118SA042657S  
 Color: White



**2**  
**2007 CY266409 Tata LPT 1518 Dropside Crane With PK 6500 Crane**  
 Kilometers: 107227  
 VIN: MAT45002077R09685  
 Engine: B591802070A62536188  
 Color: White



**3**  
**2012 CY164756 Scania R500 6x4 Horse**  
 Kilometers: 830433  
 VIN: 9BSR6X40003803010  
 Engine: DC1604L011089971  
 Color: White



**4**  
**2006 DNL571EC Freightliner CISX 500 6X4 Truck Cummins**  
 Kilometers: 174083.5  
 VIN: 1FVJAWBG36LW91132  
 Engine: 79148909



**5**  
**2004 DSX579EC Freightliner CISX 530 6X4 Truck Cummins**  
 Kilometers: 180146.9  
 VIN: 1FVJAWBG25LU46918  
 Engine: 79074710  
 Color: white



**6**  
**2014 CY77539 FAW 28.280 FD 6x4 Tipper**  
 Kilometers: 66809  
 VIN: AAK2828FDEA011200  
 Engine: WD615501513G007021



**7**  
**2012 CD26WFGP Tata LP0 918 38 Seater Bus**  
 Kilometers: 591212  
 VIN: MAT443021C7R12728  
 Engine: B591802011M63210536  
 Color: White



**8**  
**2008 CY271784 Marcopolo 29 Seater Bus**  
 Kilometers: 298787  
 VIN: 93812B3P8C023250  
 Engine: E1T144086  
 Color: White



**9**  
**2015 CF138540 Citroen 3L Relay Bus**  
 Kilometers: 49358  
 VIN: VF7YEPMFC12518295  
 Engine: 1000001925938  
 Color: White



**10**  
**2017 MZANSI5-WP Mercedes Benz Sprinter 519CDI XL 7G Auto 14 Seater Bus, Climatic Lux Conversion, With A/C**  
 Kilometers: 147920  
 VIN: WDB9066572P353442  
 Engine: 6428961915689  
 Color: White  
 Asset No.: 935213



**11**  
**2017 MZANSI7-WP Mercedes Benz Sprinter 519CDI XL 7G Auto 14 Seater Bus, Climatic Lux Conversion With A/C**  
 Kilometers: 164224  
 VIN: WDB9066572P352537  
 Engine: 64289641914403  
 Color: White  
 Asset No.: 943476



**12**  
**2017 MZANSI6-WP Mercedes Benz Sprinter 519CDI XL 7G Auto 14 Seater Bus, Climatic Lux Conversion With A/C**  
 Kilometers: 134264  
 VIN: WDB9D66572P353714  
 Engine: 6428941914974  
 Color: White  
 Asset No.: 943488



**13**  
**2017 MZANSI3-WP Mercedes Benz Sprinter 519CDI XL 7G Auto 14 Seater Bus, Climatic Lux Conversion, With A/C.**  
 Kilometers: 155046  
 VIN: WDB9066572P381710  
 Engine: 64289641939804  
 Color: White  
 Asset No.: 926486



**14**  
**2017 MZANSI2-WP Mercedes Benz Sprinter 519CDI XL 7G Auto 14 Seater Bus, Climatic Lux Conversion, With A/C.**  
 Kilometers: 158734  
 VIN: WDB9066572P368302  
 Engine: 64289641920145  
 Color: White  
 Asset No.: 926491





The auctioneers are not responsible for any errors or discrepancies in descriptions. All goods sold as-is – no duty to repair. Odometers & hour readings not verified. E&OE.

**15** CA580969 Scorpion 4.2 MX  
2.1M Trailer  
VIN: AA9B2208MHPLL2052  
Color: White



**16** Hart Sport Trailer  
Superduck Rubber Duck  
VIN: AF901254BFHEV1611



**17** Unused Zoomlion RK754-A  
4x4 Close Cab Tractor  
Including:  
FQ80 Front End Loader  
Attachment and BH8  
Backhoe Loader attached  
with PTO  
Serial Number:  
ZLRKR50583PH



**18** Unused Zoomlion RH904  
Closed Cab Tractor 90Kw  
A/C Cab  
Serial Number:  
ZLRHR10016FW



**19** Unused Zoomlion RK754  
4x4 Tractor Closed Cab  
55Kw Engine With Cab  
Serial Number:  
ZLRKR50585PH



**20** Unused Zoomlion RK754  
Tractor With Roll Over  
Protection  
55Kw Engine  
Serial Number:  
ZLRKR50582PH



**21** Fuel Tanks



**22** Unused Zoomlion 5Ton  
Draw Bar Trailer With Two  
Way Tipping Function



**23** Unused Zoomlion 5Ton  
Draw Bar Trailer With Two  
Way Tipping Function



**24** Unused Zoomlion 5Ton  
Draw Bar Trailer With Two  
Way Tipping Function



**25** Unused Zoomlion 5Ton  
Draw Bar Trailer With Two  
Way Tipping Function



**26** Unused Zoomlion 10Ton  
Draw Bar Trailer With Two  
Way Tipping Function



**27** Unused Zoomlion 10Ton  
Draw Bar Trailer With Two  
Way Tipping Function



**28** 2013 CJ21BGGP Isuzu  
KB250D  
Kilometers: 348568  
VIN: ADM2RS54AA4615598  
Engine: 4JA1256422  
Color: White





The auctioneers are not responsible for any errors or discrepancies in descriptions. All goods sold as-is – no duty to repair. Odometers & hour readings not verified. E&OE.

**29**

**2014 CA877935 Renault Clio IV 900T Expression**  
Kilometers: 110437  
VIN: VF15RAOH49633952  
Engine: H4BA400U124225  
Color: Maroon



**30**

**2017 FY11PKGP Mercedes Benz Vito 111 Tourer Pro**  
Kilometers: 37380  
VIN: WDF447703284733  
Engine: 622951F0056967  
Color: White  
Asset No.: 933052



**31**

**2014 CFM42468 Toyota Hilux Extra Cab 3.0D4D 4X4**  
Kilometers: 147815  
VIN: AHTHZ29G702203933  
Engine: 1KDA485292  
Color: White



**32**

**2017 CA745880 Toyota Quantum Panel Van**  
Kilometers: 37769  
VIN: JTFPS22P900011682  
Engine: 2KDA924268  
Color: White



**33**

**2008 CF234806 Mercedes Benz C200**  
Kilometers: 95474  
VIN: WDD2040412R037180  
Engine: 27195031071663  
Color: Silver



**34**

**2017 FY11MJGP Mercedes Benz Vito 111 Cdi Tourer**  
Kilometers: 37651  
VIN: WDF44770323281926  
Engine: 622951F0057756  
Color: White  
Asset No.: 933055



**35**

**2012 CA2777 Toyota Hilux 2.5 SRX D4D D/C 4X4**  
Kilometers: 316602  
VIN: AHTFR22G906062454  
Engine: 2KD5831706  
Color: White



**36**

**2015 CA994305 Toyota Etios**  
Kilometers: 134203  
VIN: MBJM29BT702029547  
Engine: 2NRD094569



**37**

**2017 FY11NNGP Mercedes Benz Vito 111 CDI**  
Kilometers: 24703  
VIN: WDF44770323284663  
Engine: 622951F0056975  
Color: White  
Asset No.: 933031



**37a**

**2014 CKW002WP Mercedes Benz C200 BE Avantgarde Est**  
Kilometers: 36398  
VIN: WDD2042482G258745  
Engine: 27186030728496  
Color: White



**38**

**2016 FC79XDGP Volkswagen Polo GP 1.2 Tsi**  
Kilometers: 63489  
VIN: AAVZZ6RZGU032621  
Engine: CJZ775877  
Color: White



**39**

**2017 FY11RCGP Mercedes Benz Vito 111CDI**  
Kilometers: 35437  
VIN: WDF44770323272859  
Engine: 622951F0056229  
Color: White  
Asset No.: 933113



**40**

**2015 DT60CHGP Mercedes Benz B200 CDI**  
Kilometers: 71152  
VIN: WDD2462862J309748  
Engine: 65193032685980  
Color: Silver  
Asset No.: 866611



**41**

**2013 CFM49014 Toyota Quantum Bus 2.5 D4D**  
Kilometers: 170396  
VIN: JTFSS23P100128973  
Engine: 2KDA245530  
Color: White





The auctioneers are not responsible for any errors or discrepancies in descriptions. All goods sold as-is – no duty to repair. Odometers & hour readings not verified. E&OE.

**42**

**2015 CA412728 Mercedes Benz ML350 Bluetec**  
Kilometers: 85292  
VIN: WDC1660242A547776  
Engine: 64282641667809  
Color: White  
Asset No.: 813656



**43**

**2013 CA770176 Isuzu KB250 D/Tech D/C 4X4**  
Kilometers: 131306  
VIN: ADM2SD86B73476681  
Engine: 4JK1680499  
Color: White



**44**

**2017 FY11PWGP Mercedes Benz Vito 111 Cdi Tourer**  
VIN: WDF44770323281494  
Engine: 622951F0057747  
Color: White  
Asset No.: 933081



**45**

**2005 CA874979 BMW 320D Non runner**  
Kilometers: 185359  
VIN: WBAVC36050NC55493  
Engine: 83095934  
Color: Grey



**46**

**2018 HH44TRGP Toyota Corolla**  
Kilometers: 10154  
VIN: AHTLB52E903128381  
Engine: 1ZR162684  
Color: Silver



**47**

**2017 FY11MLGP Mercedes Benz Vito 111 Cdi Tourer**  
Kilometers: 31673  
VIN: WDF44770323283859  
Engine: 622951F0056962  
Color: White  
Asset No.: 933048



**47a**

**2008 HCS840EC VW Touran 1.9 TDI**  
Kilometers: 253080  
VIN: WVWZZZ1T28W064168



**48**

**2009 CY259400 Toyota Land Cruiser 4.2D D/C 4X4**  
Kilometers: 249957  
VIN: JTELB71J207081089  
Engine: 1HZ0609705  
Color: Brown



**49**

**2013 DN34NTGP Audi A4 1.4 TDS**  
Kilometers: 94653  
VIN: WAUZZZ8K2DA167576  
Engine: CDH167431  
Color: Charcoal



**50**

**2017 FZ10JDGP Mercedes Benz Vito 114 Cdi**  
Kilometers: 24602  
VIN: WDF44770323252149  
Engine: 65195033859557  
Color: White  
Asset No.: 937233



**51**

**2016 CY317175 Mercedes Benz GLC 250D**  
Kilometers: 57069  
VIN: WDC2539092F120070  
Engine: 65192133584929  
Color: White  
Asset No.: 894657



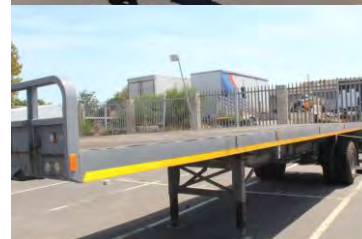
**52**

**2006 Sumitomo SH 240-3 Excavator**  
Hours: 12308.2  
VIN: 240A35251  
Engine: 6BG1209804



**53**

**1987 CA730613 SA Truck Bodies 12m Flat Deck Trailer**  
VIN: AAPV0120330387296



**54**

**1988 CY345392 Landman 6M Skeleton Trailer**  
VIN: AAPV0120240342818





The auctioneers are not responsible for any errors or discrepancies in descriptions. All goods sold as-is – no duty to repair. Odometers & hour readings not verified. E&OE.

**55**  
**2016 HVS249EC Man Tga  
 27.440 6x4 Horse Auto**  
 Kilometers: 86655  
 VIN: AAM76WB092PX34628  
 Engine: 51544391394442  
 Color: White



**56**  
**2016 HVS254EC Henred  
 Fruehauf Tri Axle AV Gas  
 Tanker Trailer**  
 VIN: AF9F341A1GRTE2101  
 Color: White



**57**  
**5 Ton 4X4 Dumper**



**58**  
**Landini 5860 Tractor**  
 Kilometers: 4003  
 VIN: 5368C49027  
 Engine: CE82192SA005113A  
 Color: Blue



**59**  
**2015 Bell Tractor 4WD Rigid  
 1216**  
 Hours: 16266  
 VIN: AEB4110040R000025  
 Engine: 08899822  
 Color: Yellow



**60**  
**2015 Bell Trailer Timber T15  
 FLA**  
 VIN: AEBT008BP00100015  
 Color: Yellow



**61**  
**Hiab Crane**



**62**  
**Ferrari Crane**



**63**  
**Assorted Steel Frame  
 Tables**



**64**  
**Cement Shoots Assorted**



**65**  
**2010 Bell 1226 Tractor**



**66**  
**2010 Bell 1226 Tractor**



**67**  
**2010 Bell 1226 Tractor**



**68**  
**2013 Bell Tri-Logger 225A**  
 VIN: AEB418225OR000206  
 Engine: 08882703  
 Color: Yellow





The auctioneers are not responsible for any errors or discrepancies in descriptions. All goods sold as-is – no duty to repair. Odometers & hour readings not verified. E&OE.

**69**  
**2015 Bell Tri-WH 220A  
 Logger Telescopic Boom**  
 Hours: 2422.8  
 VIN: AEB4242200R000012  
 Engine: 08903733  
 Color: Yellow



**70**  
**2015 Bell Tri-WH 220A  
 Logger Telescopic Boom**  
 Hours: 2664.5  
 VIN: AEB4242200R000013  
 Engine: 08903779  
 Color: Yellow



**71**  
**Bell Tri- Wh Logger 225a**



**72**  
**2018 Heli M30 3Ton Forklift**  
 Serial No.: 01030A4460



**73**  
**Apache AF300 Rough  
 Terrain Forklift**  
 504442193



**74**  
**WE Can 2.5 Ton Diesel  
 Forklift**



**74a**  
**Cat Double Drum Roller**



**75**  
**Vipac Walk Behind Roller**



**76**  
**Vipac Walk Behind Roller**



**77**  
**Vipac Walk Behind Roller**



**78**  
**Genie Light Tower**  
 S/N: 5D8LC14146001247  
 Model: TML06-1247



**79**  
**2017 Scag Liberty 248 Lawn  
 Mower**  
 Hours: 1426  
 VIN: K6804232  
 Color: Orange



**80**  
**Inverter 1KVA Petrol  
 IM1200i**



**81**  
**Inverter 3KVA Petrol  
 IM32000i**





The auctioneers are not responsible for any errors or discrepancies in descriptions. All goods sold as-is – no duty to repair. Odometers & hour readings not verified. E&OE.

**82**

APS 950C Petrol Generator  
1KVA



**83**

Generator Petrol 1KVA  
IM950



**84**

Generator Petrol 1.375KVA  
IM1500



**85**

Generator Petrol 3.5 KVA  
IM3000



**86**

APS 3800 Petrol Generator  
3.75KVA



**87**

Generator Petrol 6KVA  
IM6500E



**88**

APS 6600 Diesel Generator  
6.5KVA



**89**

APS 6500 Petrol Generator  
7.5KVA



**90**

APS 7700 Diesel Generator  
8KVA



**91**

Wacker Tamper Rammers  
Assorted



**92**

Pokers



**93**

Jack Hammers



**94**

Generators 2.5KVA



**95**

Generators 2.5 KVA





The auctioneers are not responsible for any errors or discrepancies in descriptions. All goods sold as-is – no duty to repair. Odometers & hour readings not verified. E&OE.

<b>96</b>	<b>Tamper Rammer New</b>
<b>97</b>	<b>DCK Steel Rod Cutter 36</b>
<b>98</b>	<b>Pokers</b>
<b>99</b>	<b>Forward &amp; Reverse Compactor</b>
<b>100</b>	<b>Thermadyne Mig Welder</b>
<b>101</b>	<b>Petrol Pole Drill with Attachments</b>
<b>102</b>	<b>Lutian 2200Psi Pressure Washer</b>
<b>103</b>	<b>Shimge 1.5hp Submersible Water Pump</b>



<b>105</b>	<b>Malika Chain Saw</b>
<b>106</b>	<b>Book shelf</b>
<b>107</b>	<b>L Shape Desk</b>
<b>108</b>	<b>Assorted Chairs</b>
<b>109</b>	<b>Desk and Credenza</b>
<b>110</b>	<b>Microwave and Toaster</b>
<b>111</b>	<b>L Shape Desk</b>
<b>112</b>	<b>2 Door Steel Stationery Cabinet</b>





The auctioneers are not responsible for any errors or discrepancies in descriptions. All goods sold as-is – no duty to repair. Odometers & hour readings not verified. E&OE.

- 113** 4 Drawer Steel Filing Cabinets
- 114** Desk and Credenza
- 115** Reception Counter
- 116** Desks
- 117** Computer Systems
- 118** Rexel Guillotine
- 119** Rexle Binders
- 120** 3 Door Cupboard



- 121** Folding M/C
- 122** Pitney Bowes Series 8 Insert Folding M/C
- 123** Staff Chairs
- 124** Coffe Table
- 125** Visitors Chairs
- 126** Glass Display Fridge
- 127** Deli Display Fridge Self Contained
- 128** Deli Display Fridge Self Contained





The auctioneers are not responsible for any errors or discrepancies in descriptions. All goods sold as-is – no duty to repair. Odometers & hour readings not verified. E&OE.

<b>129</b>	Deli Display Fridge Self Contained
<b>130</b>	Deli Display Fridge Self Contained Side Panel Missing
<b>131</b>	Island Display Freezer
<b>132</b>	KIC Fridge
<b>133</b>	DP1000 Ups
<b>134</b>	Minolta Multi Function Copier



<b>135</b>	Assorted Computer Systems
<b>136</b>	Assorted Computer Systems Incl LCD Screens
<b>137</b>	Assorted LCD Screens and Keyboards
<b>138</b>	Assorted Printers
<b>139</b>	Assorted Servers And UPS



**End of Auction - thank you for participating.**

For other upcoming auctions nationwide see  
**[www.whauctions.com](http://www.whauctions.com)**