

AUCTION



CATALOGUE

CATALOGUE



Guideline for the auction



Bid on Webcast at
www.whauctions.com

Note: Your bid excludes buyers premium, Natis fee & VAT. This will be added to your bid amount when invoiced.

Register at the auction or on www.whauctions.com to bid online.

Call Zelda 021 204 0599 or email zeldat@whauctions.com for registration forms & banking info

AUCTION DATE: Tuesday 30 July (10h30)

VIEW: Monday 29 July (9am to 4pm)

ADDRESS: 17 Dacres Avenue, Epping 2, Cape Town

TO BID: R25,000 Refundable deposit (EFT only) & FICA Docs.
 International bidders: R100,000 / \$8,500

BUYERS PREMIUM: 10% Live bidding / 12% Webcast bidding

VAT: 15%

OTHER FEES: Cash deposit fee: 2%. Natis fee per vehicle (if applicable): R2100.00 including VAT.

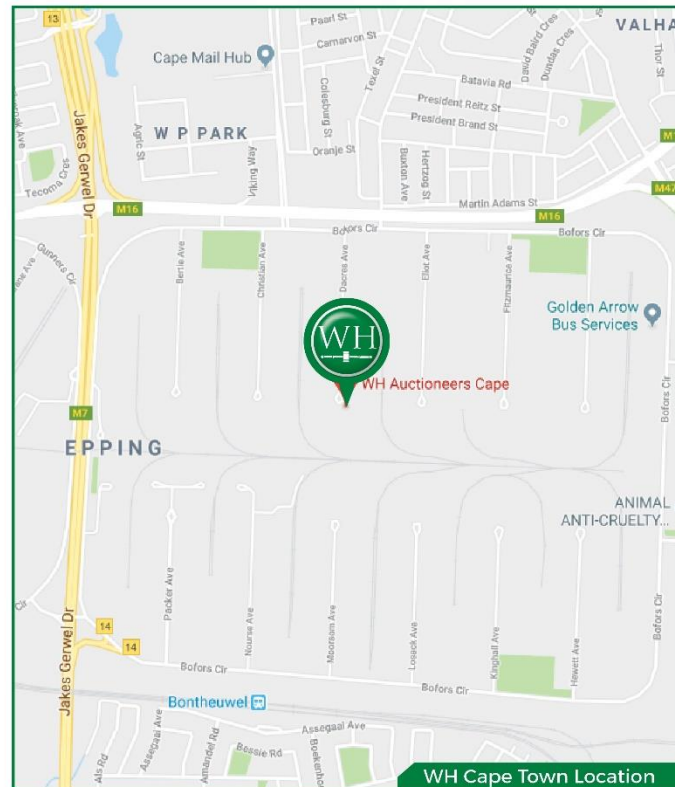
PAYMENTS: Invoices are issued immediately after the auction & must be settled in 24 hours.

DISPATCH: 7 Days after auction, excl. weekends & holidays.
 Rigging, dismantling & safety is the buyers responsibility.

INFO: Graeme 084 200 6272

REGISTRATION FORMS: Zelda 021 204 0599 / zeldat@whauctions.com

AUCTIONEER: Martin Dibowitz 083 264 1646



NOTICE TO BIDDERS:

To bid, a refundable registration deposit & Fica documents will be required. Bidding will not be approved unless all necessary documents are completed. Bids exclude Buyers Premium, any applicable Fee's (such as vehicle Natis doc fees) & VAT - this will be added on your Invoice). Webcast bidders can pre-bid online as soon as you are registered.

All printed information regarding this sale is merely a guide, subject to change and neither the auction company, sellers or publishers shall be liable for any errors in this brochure. E&OE.

Know what you're bidding on!

Inspect goods personally before bidding. This brochure is merely a guide, contact our offices or visit our website for final auction catalogues.



PRE-APPROVED FINANCE



WH has teamed up with **AuctionFinance** to provide bidders with pre-approved bank finance on qualifying lots. Call now for tailored finance deals.

Mathilda 082 337 2210





1	Powertec 300C Lincoln Mig Welder		10	250L Air Compressor	
2	Toshiba E Studio 357 MPF Photocopier ***STC***		11	250L Ingersoll-Rand Air Compressor	
3	Lincoln Compact 350I Mig Welder		12	150L Dari Air Compressor	
4	Fronius Welder		13	2 Shelves & Contents Incl Cable Pullers Levels And Hammers and various tools	
5	Lincoln Pro Cut 25 Welder		14	Assorted Tool Boxes	
6	WE Cut Welder		15	Induction Motors	
7	Assorted Welding Helmets		16	2 Shelves plus Contents Incl Angle Grinders, Drills Spanners and Gauges	
8	Pine Table		17	Electrical Winch	
9	Steel Half Drum Braai		18	Pine Table	



19	Micro Meter
20	Micro Meter
21	Micro Meter
22	Micro Tester
23	Micro Tester
24	Testing Units
25	Ingersoll Rand Cooling Unit
26	Assorted Trophies
27	Floor Jack



28	Welder
29	Cutting Torch
30	Framed Mirror
31	Kelvinator Front End Loader Washing M/C
32	Kic Combi Fridge Freezer
33	Kic Kombi Fridge Freezer
34	Defy Bar Fridge
35	Pool Table
36	Oval Board Room Table Plus 6 Chairs





37	Pine Bar Chairs
38	Kirby Vacuum Cleaner
39	Wood Lathe
40	Wood Lathe
41	2.8 kva Generator
42	3.5 Kva Generator
43	3. 5 Kva Generator
44	Atima 6KVA Diesel Generator
45	IM950 Petrol Generator 1KVA



46	IM1500 Petrol Generator 1.2 KVA
47	APS6600EDE Diesel Generator 6.5KVA
48	APS6500PE Petrol Generator 7.25KVA
49	IM3000 Petrol Generator 2.5 KAV
50	High Pressure Washer
51	Karcher High Pressure Washers
52	Cobra Vacuum Sweeper
53	Assorted Hard Hats
54	Petrol Weed Eater





55	Petrol Leaf Blower
56	Hydraulic press Frame
57	Hydraulic Press Frame
58	Ryobi Bench Grinders on Stand
59	Large Submersible Pumps
60	Assorted Submersible Pumps
61	Cut Off Saw
62	Motors on Stand
63	Krafft 1316B Pedestal Drill

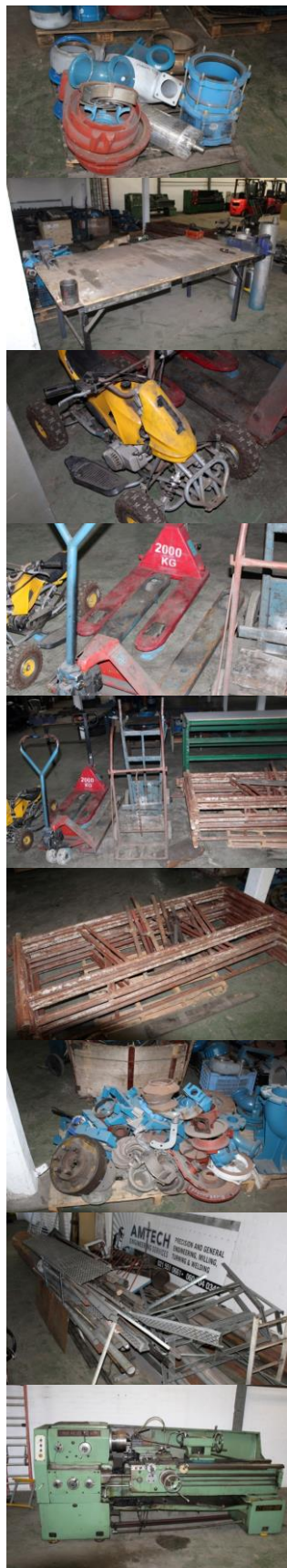


64	Bernardo Pedestal Drill
65	Assorted DB Boards
66	Assorted Steel Frames and Stands
67	Assorted Drums of Oil
68	Steel Work Table
69	Assorted Cutting Discs
70	Gantry Plus 5 Ton Block and Tackle
71	Electric Hoist
72	Assorted Block And Tackles





73	Assorted Flanges and Valves
74	Steel Work Table incl 2 Vice Grips
75	Mini Quad Bike
76	Pallet Jacks
77	Gas Bottle Trollys
78	Assorted Scaffolding
79	Assorted Flanges and Elbows
80	Assorted Scrap
81	Yunna 6250X1500 Lathe



82	Voest Lathe
83	Gap Lathe L-1640
84	Milling Machine
85	Standard Milling Machine
86	John Deere Generator Partly Stripped
87	Horizontal AF812N Bandsaw
88	Steel Work Table
89	Electrical Stacker Not Working
90	Corchi 6040 Wheel Balancing Machine





91	Assorted Steel Frames
92	Pallet Lifting Chains Incl Single & Double Hook
93	Assorted Lifting Chains
94	Assorted Cable Slings
95	Assorted Cable Slings
96	Assorted Lifting Straps
97	Assorted Chains
98	Steel Work Tables
99	2 Door Steel Cabinet



100	Assorted Scrap
101	Steel 4 Drawer Cabinets
102	Assorted Swivel Chairs
103	Desk & Pedestal
104	Assorted Office Furniture
105	UPS Units
106	4 Door Cupboard
107	4 Drawer Desk
108	L Shape Desk And Chair





109	L Shape Desk And Chair
110	Computer Systems, Lcd Screen And Keyboard
111	Board Room Table & 5 Chairs
112	Assorted Desks and Credenza
113	Contents of Table
114	Saeco Coffee M/C
115	Microwave Ovens
116	Round Table Couch, Rocking Chair and Contents
117	Manhand 2.5Ton Diesel Forklift



118	Manhand 2.5 Ton Diesel Forklift
119	Manhand 2.5Ton Diesel Forklift
120	Manhand 1.8Ton Diesel Forklift
121	Assorted Pipes
122	Pressure Tester
123	John Deere 5415 Tractor VIN: P05415X008745 Engine: PE4045D588717
124	2018 Deutz-FHR 3045E 2WD E3 Tractor Hours: 78.5 VIN: NNZ04501V0BD01965 Engine: S3251J20750 Color: Green
125	2018 Deutz-FHR 3045E 2WD E3 Tractor Hours: 704 VIN: NNZ04501V0BD01962 Engine: S3251J20758 Color: Green
126	2018 Deutz-FHR 3045E 2WD E3 Tractor Hours: 713.4 VIN: NNZ04501V0BD01961 Engine: S3251J20749 Color: Green





127	2018 Deutz-FHR 3045E 2WD E3 Tractor Hours: 820 VIN: NNZ04501V0BD01847 Engine: S3251H58761
128	Unused Zoomlion RK754 Tractor With Roll Over Protection 55Kw Engine Serial Number: ZLRKR50579PH **NO NATIS**
129	Saker 7 Ton Forklift 606205001 VIN: 04P110130J3002708 Serial No.: 511010389201806032
130	Totem AF300-J 3 Ton Articulated Forklift (556712003)
131	Manhand 4.5T Perkins 1104D 4M Diesel Forklift 2 Stage Mast (Demo) CPCD45N-RW35 (2)
132	Manhand 3.5T A498BT1 4.8M Diesel Forklift 3 Stage Mast CPCD35N-RW27(2)
133	Manhand 1.8T Electric 4.8M Forklift 3 Stage Mast CPD18-AC4 (2)
134	2015 CW66140 Volvo BL71BC TLB Hours: 3249.6 VIN: VCEBL71BV01418373
135	Volvo BL61 TLB Hours: 5222.8 VIN: BCEOBL61T00011655



136	2010 CY65995 Nissan Hardbody 2.5TDI NP300 L Kilometers: 202939 VIN: ADNK030000A002461 Engine: YD25221849T Color: White
137	2011 CA884037 Hyundai H100 Dropside Kilometers: 228352 VIN: KMFZBX7HLBU749337 Engine: D4BHB033259 Color: White
138	2005 CX1904 Toyota RAV 4 Kilometers: 180160 VIN: JTEXR20V000027769 Engine: 1ZZ2388276
139	2013 CY332658W Ford Bantam 1.3 LDV Kilometers: 183397 VIN: AFAWXXMJKWBL15612 Engine: AL022806 Color: White
140	2016 CA823833 Volkswagen Transporter TDI Kilometers: 170878 VIN: WV1ZZZ7JZGX014558 Engine: CAA915586 Color: White
141	2013 CY176613 Mercedes Benz C180 Engine Problems Kilometers: 179908 VIN: WDD2040312R316243 Engine: 27491030093040 Color: Red Asset No.: 718640
142	2012 NUR49875 Ford Bantam Bakkie Kilometers: 155670 VIN: AFAWXXMJKWBS21704 Engine: AL025037 Color: White
143	1999 CF240658 Honda Civic S03 Kilometers: 155395 VIN: AHMEB25323E127501 Engine: D15Z43019449 Color: Green
144	2010 CA232201 Toyota Hilux VVT LWB With Canopy Kilometers: 369036 VIN: AHTCW12G804030371 Engine: 1TR8247285 Color: White





145

2016 FC11GRGP Ford Ranger 2.2TDCI S/C With Tool Box Canopy
Kilometers: 106801
VIN: AFANXXMJ2NFY88381
Engine: PF2KNFY88381



146

2010 CY66034 Nissan Hardbody 2.5TDI NP300 LWB With Canopy
Kilometers: 186968
VIN: ADNK030000A002467
Engine: YD25218849T



147

2013 CJ21BGGP Isuzu KB250D LDV
Kilometers: 348568
VIN: ADM2RS54AAA4615598
Engine: 4JA1256422



148

2008 CY294718 Opel Corsa 1.7DTI Sport Utility
Kilometers: 199786
VIN: ADMXF805E84438693
Engine: Y17DT1702835



149

2016 CF188570 Ford Fiesta Trend 1.5D 5DR
Kilometers: 56583
VIN: WFODXXGAKDGG16758
Engine: GG16758



150

2013 NPN55391 Chevrolet Utility 1.5 With Canopy
Kilometers: 162522
VIN: ADMCF80MJD4642790
Engine: CR9025689



151

2017 CF173858 Ford Ranger 2.2D XLT 4X2 D/C
Kilometers: 76942
VIN: AFAPXXMJ2PG532107
Engine: QJ2LPG532107



152

2017 CA899491 Toyota Corolla 1.6 Auto
Kilometers: 12782
VIN: AHTBB0JEX00020627
Engine: 1ZRVS91852



153

2015 CA998975 Nissan NP 200 Bakkie
Kilometers: 135733
VIN: ADNUSN1D5U0077759
Engine: K7MF710UJ07539



154

2016 CA750470 Volkswagen Transporter TDI
Kilometers: 97923
VIN: WV1ZZZ7JZGX013811
Engine: CAA905991



155

2015 CF203194 Ford Fiesta Trend 1.6 DSI 5DR
Kilometers: 155039
VIN: WFODXXBAKDEG64221
Engine: EG64221



156

2009 CF254489 Toyota Hilux 3.0D4D 4X4 Police Numbers
Kilometers: 124211
VIN: AAPV0121920656227
Engine: V0120656227



157

2015 CF216682 Ford Ranger 2.2D XL 4X2 D/C
Kilometers: 107313
VIN: AFAPXXMJ2PEA35742
Engine: QJ2KPEA35742



158

2005 CF230362 Toyota Tazz
Kilometers: 142080
VIN: AHT54EE900A0239862
Engine: 2E5060668





159
2015 CW59022 Nissan NP200
1.6 P/U S/C
 Kilometers: 9572
 VIN: ADNUSN1D5U0097509
 Engine: K7MF710UJ45789



166
2016 CF172881 Ford Fiesta
Trend 1.5D 5 DR
 Kilometers: 98860
 VIN: WFODXXGAKDGB17539
 Engine: GB17539



160
2016 FF96XJGP Ford Ranger
2.2TDCI S/C With Tool Box
Canopy
 Kilometers: 69678
 VIN: AFANXXMJ2NGA55894
 Engine: PF2KNGA55894



167
2018 JLG899MP Mercedes-Benz
GLA 200
 Kilometers: 12535
 VIN: WDC1569432S449758
 Engine: 27091031473172
 Asset No.: 958298



161
2008 CF234806 Mercedes Benz
C200
 Kilometers: 95474
 VIN: WDD2040412R037180
 Engine: 27195031071663



168
2016 CA29252 BMW Coupe
M235I
 Kilometers: 37028
 VIN: WBA1M12060V244375
 Engine: 07529254



162
2012 CW33121 Toyota Fortuner
3.0 D-4D R/B A/T
 Kilometers: 130550
 VIN: AHTZZ69G305031846
 Engine: 1KD5940060



169
2014 CA801357 Jeep Cherokee
3.2 AWD Limited
 Kilometers: 58900
 VIN: IC4PJMHS6EW238626
 Engine: ew238626



163
2008 Aston Martin Volante DB9
Convertible
 Kilometers: 37192



170
2011 CEA8769 Humez Superlink
6M Front Flat Deck Trailer
 VIN: AA9H236CABWHU2002



164
2015 CF71167 Ford Ranger 2.2D
XL 4X2 D/C
 Kilometers: 142838
 VIN: AFAPXXMJ2PFK51784
 Engine: QJ2KPFK51784



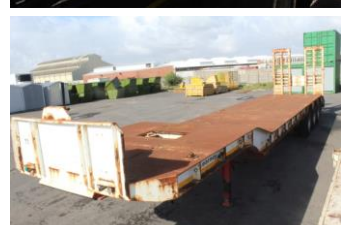
171
2011 CEA8202 Humez SuperLink
12M Rear Flat Deck Trailer
 VIN: AA9H236CABWHU2001



165
2010 CY37977 Nissan NP200
1.6i Bakkie
 Kilometers: 205241
 VIN: ADNUSN1D5U0009327
 Engine: K7MF710UE38373



172
2009 CA621224 Kearneys 3 Axle
Lowbed Trailer With Ramps
 VIN: AA9A361MA9TKR1203





173 CA443229 Flatdeck 3 Axle Flatdeck Semi Trailer
VIN: TGD26810



174 2013 Hamm 3520 Pad Foot Roller
Hours: 2232
VIN: H1762113



175 2007 Bomag BW120AD Double Drum Roller
Hours: 2311.3
VIN: 101880024780



176 Concrete Pump Putzmeister BSA 1409



177 Green Power Generator 250Kva
Hours: 790



178 2006 JBJ337EC UD UD90 Fridge Truck
Kilometers: 303444
VIN: ADDT550000004716
Engine: FE6221210C



179 2006 FPX886EC Nissan UD80 Fridge Truck
Kilometers: 293239
VIN: ADDT530000004305
Engine: FE6207710B



180 2004 DDT477EC Mercedes-Benz 1517 Atego 8T Volume Truck With Tail Lift
Kilometers: 332132.2
VIN: WDB9700786K895138
Engine: 90491100368467



181 2005 Truck & Bus Components Warrior 14-160 Load Body
Kilometers: 83569
VIN: AA9D2AC145JMC1054
Engine: 69296957



182 2006 CL17428 Man M 2000 16000L Tanker
Kilometers: 277537
VIN: AAML960657PX15807
Engine: 15512805181284



183 2010 CL16715 International SBA 7400 6x4 15000L Tanker
Kilometers: 134503
VIN: 1HTWGAZTX6E465456
Engine: 2148090



184 2004 DRC891EC Mercedes-Benz 1517 Atego 8T Dropside Truck
Kilometers: 210540
VIN: WDB9700786K899030
Engine: 90491100371151



185 2004 DCN644EC Mercedes-Benz 1517 Atego 8T Dropside Truck
Kilometers: 251593.2
VIN: WDB9700786K899026
Engine: 90491100371153



186 2007 VNJ053GP Isuzu FTR800 Dropside
Kilometers: 310837
VIN: ADMFTR33M6Z356876
Engine: 6HH1418585





187

**2013 CSW825NC Powerstar 8x4
15/17 m3 Tipper Truck**
Kilometers: 25848
VIN: LBZF56GB3CA020405
Engine: 1612K125792



188

**2014 CF213803 Hyundai HD72
Tipper**
Kilometers: 89285
VIN: KMFGA17BRDC233669
Engine: D4DBD550606



189

**2015 CA572095 Hyundai HD 72
Mighty Tipper F/C D/S**
Kilometers: 80081
VIN: KMFGA17BREC255934
Engine: D4DBE566896



190

**2015 CF227990 Mitsubishi Fuso
FN 25/270 12M Flat Deck**
Kilometers: 73024
VIN: ABJFN61FRFEY00799
Engine: 6M60204162



191

**2014 CF207100 FAW 33.330
Concrete Mixer**
Kilometers: 157860
Hours: 7962
VIN: LFNDVXMJ7EAD08178
Engine: WD615441514C001589



192

Container Home Standard Unit



193

**2007 Grove RT650E 50Ton
Mobile Crane**
Hours: 8612
VIN: QRJ50716RTD



End of Auction - thank you for participating.

www.whauctions.com



Exclusive Auction Cape Town



Wed 7 Aug @ 10h30

17 Dacres Avenue, Epping 2, Cape Town

VIEW: TUE 6 AUG

BID LIVE OR ONLINE

Registration: R10,000 refundable deposit & Fica • Buyers Premium: 5% (7% Webcast bidders)

**± 180 Luxury & Budget Cars,
LDV's & SUV's**

Including Non-Runners & Accident damaged vehicles

Pre-Approved Finance available. Call our offices to apply before bidding.

Stock added daily! See vehicle list online...

whauctions.com

WesBank - a division of **FirstRand Bank Ltd.**
Registered Bank. An Authorised Financial
Services and Registered Credit Provider.
NCRCP20.



**Auction conducted by
WH Auctioneers on behalf of Wesbank**
Our rules of auction comply with section
45 of the CPA, No. 68 of 2008



ROAD CIVILS, TRUCKS & PLANT AUCTION

WED 31 JULY AT 10H30
578 16TH ROAD, MIDRAND, GAUTENG

VIEW: Tue 30 July
DEPOSIT: R50,000 (EFT - refunded)

Includes bank owned & de-fleet assets



WesBank - a division of FirstRand Bank Ltd, Registered Bank, An Authorised Financial Services and Registered Credit Provider, NCRCP20.



**2015 Vögele Superior
1800-3 Paver**



**2010 Wirtgen WR2000
2010 Wirtgen WR2400**



**2014 Terex Finlay 683
2 Deck Screen**



**5x 2016 Caterpillar D6R2
Dozers with rippers**



**7x Tracked
Excavators**



**3x Volvo A30E
ADT's**



**2x 2010 Bell 670C
Motor Graders**



**5x Caterpillar 950GC & 950H
& other Wheel Loaders**



**9x Padfoot, Smooth Drum
& Tandem Rollers**



**9x Backhoe
Loaders / TLB's**



**10x Water Tankers
inc 4x 12,000L Drinking Water**



**17x 10m³ & 6m³
Tipper Trucks**



**2015 Hino 500 1322 4x4
Cherry Picker & others**



**5x Crane Dropsides
11x Dropsides**



**6x Van / Closed Body
& Tautliners**



**24x Mechanical Horses
inc 4x 2016 Axor 3340**



**5x Readymix / Cement
Mixer Trucks**



**Engineering / Fabrication
inc Pressbrake, Injection Molders, Rod
Benders, Welders & more**

AND MUCH MORE! SEE FULL LIST ON:

whauctions.com

BID LIVE OR ON WEBCAST

Wihan: 084 253 5000
Shannon: 084 520 5000
Office: 011 574 5700
WH Auctioneers (Pty) Ltd