

AUCTION CATALOGUE

WED
26
SEPT



whauctions.com

Guideline for the auction



Bid on Webcast at
www.whauctions.com

NOTICE TO BIDDERS:

Please ensure that you read & understand the complete rules of auction document when you register for any auction. Please inspect goods on viewing day & know what you're bidding on. Bids can not be cancelled after the auction. Your bid excludes Buyers Premium & VAT (will be added on your Invoice).

In compliance with the CPA (Consumer Protection Act), clients wishing to register for our auctions are required to complete the registration form and sign/accept the Rules of Auction. The following apply to our Rules of Auction:

This highlights brochure for this auction sale is merely a guide, subject to change and neither the auction company or sellers shall be liable for any errors in this document.

Please inspect goods on Viewing Day when the final auction catalogue will be available.

AUCTION DATE: Wednesday 26 September at 10h30)

VIEW: Tuesday 25 September (9am to 4pm)

ADDRESS: 578 16th Road, Randjespark, Midrand

TO BID: R25,000 Refundable deposit (EFT only) & FICA Docs.
 International bidders: R100,000

BUYERS PREMIUM: 10% if bidding live / 12% if bidding via Webcast

VAT: 15%

OTHER FEES: Cash deposit fee: 1.5%. Natis fee per vehicle (if applicable): R2100.00 including VAT.

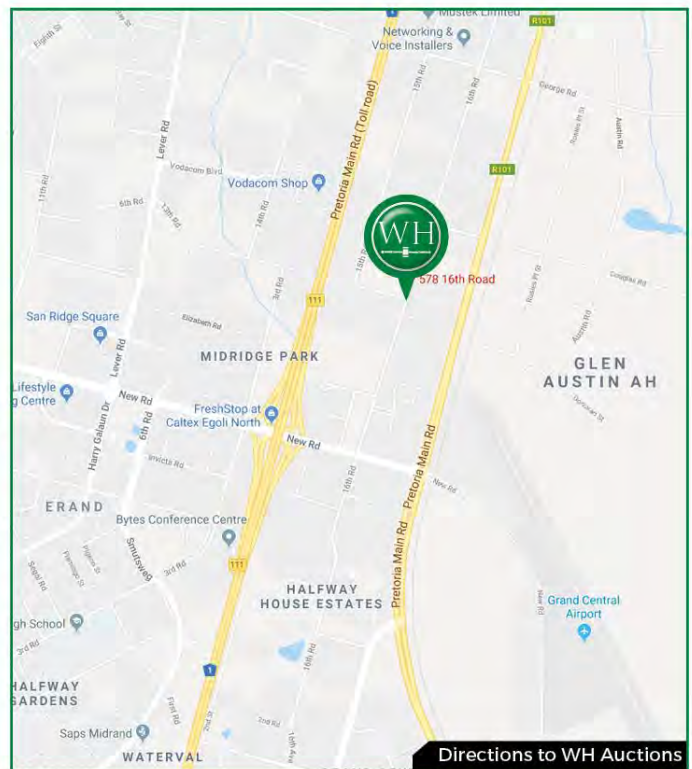
PAYMENTS: Invoices are issued immediately after the auction & must be settled in 24 hours.

DISPATCH: 7 Days after auction, excl. weekends & holidays.
 Rigging, dismantling & safety is the buyers responsibility.

INFO: Wihan 084 253 5000

REGISTRATION: 011 574 5700

AUCTIONEERS: Shannon Winterstein - 084 520 5000
 Mathew Henderson - 084 252 5000



Directions to WH Auctions



PRE-APPROVED FINANCE



WH has teamed up with **AuctionFinance** to provide bidders with pre-approved bank finance on qualifying lots. Call now for tailored finance deals.

Anton : (083) 790 0090





The auctioneers are not responsible for any errors or discrepancies in descriptions. All goods sold as-is – no duty to repair. Odometers & hour readings not verified. E&OE.

1	65mm Demolition Jack Hammer in Case
2	Tampering Rammer Petrol - 196cc
3	Petrol Concrete Saw
4	Pop Up 225kg Scissor Lift
5	2018 Platinum Trailer 1,000L Diesel Bowser VIN: AA9B175UBJBLG2248
6	2018 Platinum Trailer 1,000L Diesel Bowser VIN: AA9B175UBJBLG2249
7	2014 DH94JSGP Brinto Engineering Double Axle Flat VIN: AA9B225BMEHWX1433 Color: Black
8	2018 Platinum Trailer 2.5Ton Break Neck Car Trailer VIN: AA9B220MBJBT2254
9	2017 HD31FNGP Isuzu NQR500 AMT Closed Body Kilometers: 70855 VIN: ADMNR75RFBN807097 Engine: HHK1591132 Color: White



10	2018 Isuzu NQR500 Volume Van Kilometers: 68592 VIN: ADMNR75RFBG783073 Color: White
11	2017 HD31GGGP Isuzu FTR850 AMT Tautliner Hours: 748 Kilometers: 31210 VIN: ADMFTR34H8N809279 Engine: 6HK1696369 Color: White
12	2018 Dynapac CC125 Tandem Roller
13	2013 Bomag BW120 AD-4 Roller Hours: 1180 Engine: 7DM2951 Serial No.: 101880211581
14	2013 Bomag BW120 AD-4 Roller Hours: 1543 Engine: DJ2774 Serial No.: 101880211492
15	2013 Bomag BW120 AD-4 Roller Hours: 1357 Engine: D7DL5692 Serial No.: 101880211493
16	2013 Bomag BW120 AD-4 Roller Hours: 1395 Engine: DJ2892 Serial No.: 101880082901
17	Concrete Site Dumper
18	2004 DZ57JXGP Hino 15-258 Refrigerated Truck Kilometers: 284655 VIN: AHHFG1JSP00010291 Engine: J08CTT16242 Color: White





The auctioneers are not responsible for any errors or discrepancies in descriptions. All goods sold as-is – no duty to repair. Odometers & hour readings not verified. E&OE.

19
2013 NKR45300 Nissan UD70 Volume Van
 VIN: ADDH020000000635
 Engine: FE6223910D
 Color: White



20
2008 FBV137EC Toyota Dyna 6-105 Refrigerated Truck
 Kilometers: 341550
 VIN: JHFYF217704001914
 Color: White



21
2007 WJN435GP Isuzu NHR150 Van Body
 Kilometers: 237149
 VIN: ADMNR55RV5Z358755
 Engine: 4JB1379786
 Color: White



22
2015 HMZ483EC Fuso Canter FE7-150 Drop Side AMT
 Kilometers: 233666
 VIN: ABJFEB71GEEY00744
 Engine: 4P10B54365
 Color: White



23
2014 DH98NDGP Hino 300 614 Drop Side
 VIN: AHHCK3H201000378
 Engine: N04CVA16574
 Color: White



24
2012 BX13SLGP Hino 300 614 Drop Side
 Kilometers: 253192
 VIN: AHHCK3H501000021
 Engine: N04CVA10902
 Color: White



25
2007 WRN652GP Isuzu FRR500 Drop Side Truck
 Kilometers: 14235
 VIN: ADMFRR33H6Z379692
 Engine: 6HH1422492
 Color: White



26
2009 YGG233GP Dyna 7-195 Cherry Picker Truck with Crew Carrier Canopy
 Kilometers: 35805
 VIN: JHFYE207004001919
 Engine: J05CD25455



27
2009 YBR247GP Dyna 7-195 Cherry Picker Truck with Crew Carrier Canopy
 Kilometers: 68050
 VIN: JHFYE207504001933
 Engine: J05CD25483
 Color: White



28
2009 YCK213GP Dyna Drop Side
 Kilometers: 548138
 VIN: JHFCF437305001499
 Engine: W04DJ27477
 Color: White



29
12Ton Mobilift Crane



30
THV195GP JCB 540-170 Tele Handler
 Hours: 7427
 VIN: SLP5AFKG6E1186948
 Engine: SB32040068U1080205



31
2005 JLG 3513 Tele Handler
 3.5 Ton, 12 Meter
 Hours: 9369
 Serial No.: YC500001160001164



32
2008 JLG 3512PS Tele Handler
 Hours: 9579
 Serial No.: YC500001160004072



33
2001 Genie S85 (Rev 3) Diesel Boom Lift
 Hours: 405
 Serial No.: S80-2861



34
2008 Caterpillar 385C LME Excavator
 Hours: 14795
 VIN: CAT0385CVSBE00292



35
2012 Hyundai Robex R520LC-9S Excavator
 Hours: 6856
 VIN: HHHQB12HB0000031



36
Hitachi Zaxis Z330LC-5G Excavator
 Hours: 1053
 VIN: HCMDE91C00043257





The auctioneers are not responsible for any errors or discrepancies in descriptions. All goods sold as-is – no duty to repair. Odometers & hour readings not verified. E&OE.

37
2012 Caterpillar 336D LME Excavator
 Hours: 28895
 VIN: CAT0336DCJ2F00411
 Engine: THX39407



46
2007 Komatsu D65EX-15 Dozer
 Hours: 16430
 VIN: KMTOD060V01068047



38
2008 Komatsu PC400-7 Excavator
 Hours: 11346
 VIN: KMTPC086C02051205



47
2016 NN87354 Bell 770G Grader
 Hours: 1432
 VIN: 1DW770GXEFC669407
 Engine: RG6090G020045



39
2011 Volvo EC360BLC Excavator
 Hours: 5959
 VIN: VCEC360BV00015368



48
2007 Caterpillar 140H Grader
 Hours: 11499 + 1216
 VIN: CAT0140HVXZH00656
 Engine: 10Z49279



40
2011 Komatsu PC300-8 Excavator
 Hours: 12280
 VIN: KMTPC191V02062402



49
2014 HLF112MP Case Farmall 100JX Tractor with Cab
 Hours: 2345
 VIN: AE9JX100FAECY1003
 Engine: 301858
 Color: Red



41
2011 Komatsu PC220-8 Excavator
 Hours: 13944
 VIN: KMTPC181E02085024



50
2013 Feraboli Entry 120 Round Baler
 Serial No.: ROTOTIMBALLATRICE



42
2012 Komatsu PC200-8 Excavator
 Hours: 13018
 VIN: KMTPC180E87C70201



51
2010 Broce RCT350 Broom
 Hours: 1741
 Serial No.: 406992



43
2015 JCB JS205LC Excavator
 Hours: 2591
 VIN: PUNJE20BT02359734
 Engine: 84218975



52
2001 JLG 1932 Electric Scissor Lift
 Hours: 485
 Serial No.: 0200115202



44
2015 Sany SY215C Excavator
 Hours: 10481
 Serial No.: 135Y0021HN3218



53
2000 HVL755MP Mercedes Benz 1724 65 Seter Bus
 VIN: ADB39704426027151
 Engine: 447900000079942
 Color: Beige



45
2014 Sany SY215C Excavator
 Serial No.: 135Y021HN3158



54
2000 NP143680 Mercedes Benz 1724 65 Seater Bus
 Kilometers: 122776
 VIN: ADB39704426027154
 Engine: 447900000079902
 Color: Beige





The auctioneers are not responsible for any errors or discrepancies in descriptions. All goods sold as-is – no duty to repair. Odometers & hour readings not verified. E&OE.

<p>55</p>	<p>2015 Elcon Vertical Saw185D Serial No.: 1410013</p>		<p>64</p>	<p>2011 BK33HMGP Mercedes Benz 2628 14,000L Water Tanker Kilometers: 105640 VIN: WDB9506436L543702 Engine: 90692600890036 Color: White Asset No.: WAT032</p>	
<p>56</p>	<p>2017 FY09TFGP Mercedes Benz Vito 111 CDI Tourer Pro Passenger Van Kilometers: 44044 VIN: WDF44770323273242 Engine: 622951F0056232 Color: white</p>		<p>65</p>	<p>2005 HSK806MP Nissan UD440 16,000L Water Tanker Kilometers: 662592 VIN: ADDT1900000000889 Engine: GE13025938D Color: White</p>	
<p>57</p>	<p>2017 FY09VVGP Mercedes Benz Vito 111 CDI Tourer Pro Kilometers: 46184 VIN: WDF44770323274045 Engine: 622951F0056221 Color: White</p>		<p>66</p>	<p>2011 FMR292MP Isuzu FTR850 10,000L Water Tanker Kilometers: 180512 VIN: ADMFTR34H8G550341 Engine: 6HK1601988 Color: White</p>	
<p>58</p>	<p>2017 FY11RGGP Mercedes Benz Vito 111 CDI Tourer Pro Passenger Van Kilometers: 41807 VIN: WDF44770323267765 Engine: 622951F0050767 Color: white</p>		<p>67</p>	<p>160 kVA Guard 3 Phase Silent Diesel Generator</p>	
<p>59</p>	<p>2017 FY09SVGP Mercedes Benz Vito 111 CDI Tourer Pro Kilometers: 29975 VIN: WDF447703233087 Engine: 622951F0042300 Color: White</p>		<p>68</p>	<p>80mm Petrol Water Pump WB30XH</p>	
<p>60</p>	<p>2016 FH61LWGP Nissan NV350 15 Seater Bus Kilometers: 125026 VIN: JN1UB4E26Z0006903 Engine: QR25615244Q Color: White</p>		<p>69</p>	<p>Shimge 1.5hp Submersible Water Pump</p>	
<p>61</p>	<p>2012 CD70TXGP Mercedes Benz Axor 2628 14,000L Water Tanker Kilometers: 62592 VIN: WDB9506436L643528 Engine: 90692600954716 Color: White Asset No.: WAT039</p>		<p>70</p>	<p>7 Drawer Tool Cabinet with Tools</p>	
<p>62</p>	<p>2011 BJ21ZLGP Mercedes Benz 2628 14,000L Water Tanker Kilometers: 88155 VIN: WDB9506436L538526 Engine: 90692600886781 Color: White Asset No.: WAT026</p>		<p>71</p>	<p>Pressure Washer</p>	
<p>63</p>	<p>2011 BK33JLGP Mercedes Benz 2628 14,000L Water Tanker Kilometers: 100125 VIN: WDB9506436L543680 Engine: 90692600889908 Color: White Asset No.: WAT028</p>		<p>72</p>	<p>90# Demolition Jack Hammer</p>	



The auctioneers are not responsible for any errors or discrepancies in descriptions. All goods sold as-is – no duty to repair. Odometers & hour readings not verified. E&OE.

73	38 kVA Guard 3 Phase Silent Diesel Generator
74	Swaging Machine Serial No.: MSUNSWM000634
75	2013 Swaging Machine Serial No.: MSUNSWM00512
76	Apache AP218 1.6T Wheel Loader with Detachable Bucket and Forks Serial No.: 17218010
77	Apache AF300 Rough Terrain Forklift 3Ton Serial No.: 18625411
78	Saker M70 7 Ton Diesel Forklift Notes: 81194003
79	Saker M30 3 Ton Diesel Forklift with Side Shift and Container Mast
80	2010 BG73VJGP Mitsubishi Fuso FE6-109 4x2 Horse **Sold with Trailer** Kilometers: 67079 VIN: ABJFE84PE99EY01221 Engine: 4D34M41248 Color: Yellow
81	2010 BG73XKGP LCM Engineering Tautliner Trailer **Sold with Horse** VIN: AE9L162HBA1BF1009 Color: Yellow



82	2014 HHF008EC FAW J6 28-460FT 6x4 Horse Kilometers: 294200 VIN: LFWSSXSJDIE13229 Engine: CA6DN146E352223174 Color: White Asset No.: U3374
83	2014 NMR8702 GRW 13,000L Milk Tanker Draw Bar VIN: AC9112SS25ACV1251
84	2011 FNC354EC Renault Premium Lander 440DXi Horse Kilometers: 508885 VIN: VF625KPA000000178 Engine: 108079 Color: White
85	2014 NMR9679 MAN TGS 27-440 Milk Tanker Kilometers: 204648 VIN: AAM76W5428PX30746 Engine: 51537482273754 Color: White
86	2015 NMR9914 CA Muller 23,000L Milk Tanker Draw Ba VIN: AF9B432CAFWFA1054
87	2015 FZ67FLGP Scania R460 6x4 Horse Kilometers: 314801 VIN: 9BSR6X40003876731 Engine: DC13106L018264277 Color: White
88	2016 HB31KGGP SATB Interlink Flat Deck - Front Lin VIN: AHBDSB2FFHB071987
89	2016 HB31HPGP SATB Interlink Flat Deck - Rear Link VIN: AHBDSB2FF2HB071988
90	2002 HXY638MP Mercedes Benz Actros 1835 4x2 Horse Kilometers: 84891 VIN: WDB9540322K739565 Color: White



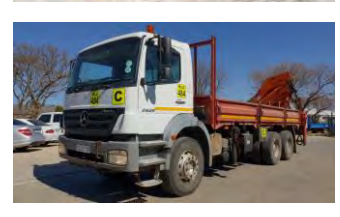


The auctioneers are not responsible for any errors or discrepancies in descriptions. All goods sold as-is – no duty to repair. Odometers & hour readings not verified. E&OE.

91	2018 CVE Tri Axle Flat Deck Trailer VIN: AA9H338MA8WNY1023 Color: Blue
92	2012 NPCG9437 Mitsubishi Fuso FV26-420 6x4 Horse Kilometers: 256620 VIN: ABJFV51JJB EY00105 Engine: 6M70446237 Color: White
93	2012 HRG596MP TOHF Tri Axle Flat Deck Trailer VIN: AE90342CACNLZ1C90 Color: White
94	Caterpillar 120G Grader Hours: 8461 Serial No.: 61W00655
95	Caterpillar 120 Grader
96	2008 Wirtgen WR2400 Recycler Serial No.: 05WR-0128
97	2003 Caterpillar D10R Dozer
98	2014 CAW62110 Caterpillar 428F 4x4 TLB Hours: 5155 VIN: CAT0428FELBH04049 Engine: CRS76931
99	2011 BH67CCGP Caterpillar 428E 4x4 TLB Hours: 10887 VIN: CAT0428EPDPH01961 Engine: CRS63602 Asset No.: TLB032



100	2011 BJ83JSGP Caterpillar 428E 4x4 TLB Hours: 7333 VIN: CAT0428EJDPH02157 Engine: CRS63919 Asset No.: TLB034
101	2010 XSF129GP Caterpillar 428E 4x4 TLB Hours: 3337* VIN: CAT0428ECSNL03479 Engine: CRS54466 Asset No.: TLB091
102	2015 NPN14823 Bell 315SK 4x4 TLB Hours: 3233 VIN: AEB877KT01003311 Engine: PE4045C957581
103	2013 NT31971 Bell 315SK 4x4 TLB Hours: 5354 VIN: AEBF877KT01002756 Engine: PE4045C919731
104	2009 YCG123GP Mercedes Benz Axor 2628 6x4 Crane Tr with Rear Mounted 2008 Palfinger PK32080 Crane Kilometers: 266265 VIN: WDB9506436L354884 Engine: 90692100758766 Color: White
105	2006 WGT738GP MAN 18.240 Crane Truck Kilometers: 373056 VIN: AAMN620114PX17811 Engine: 20815855631589 Color: White Asset No.: CF006
106	2001 MNZ332GP MAN 26-264 6x4 Crane Truck with Pesci SE175A Cab Mounted Crane Kilometers: 535029 VIN: AAML960070PX06839 Engine: 15896445565271 Asset No.: TT023
107	2004 RSS582GP Isuzu FTR Crane Truck with Palfinger PK16000 Cab Mounted Crane Hours: 1897 Kilometers: 23496 VIN: ADMFTR33M12203900 Engine: 6HH1323045 Asset No.: TVH07005
108	2012 DX74MJGP MAN TGS27.440 6x4 Crane Horse with Fassi F130.21 Cab Mounted Crane Kilometers: 619445 VIN: AAM76W1011PX26464 Engine: 51529800142989 Color: White





The auctioneers are not responsible for any errors or discrepancies in descriptions. All goods sold as-is – no duty to repair. Odometers & hour readings not verified. E&OE.

109
2011 FBC736FS Isuzu FTR850 Fire Tender Truck
 Kilometers: 30846
 VIN: ADMFTR34H8G557872
 Engine: 6HK1605109
 Color: Red



110
2010 NUF17294 Nissan UD80 Fire Tender Truck
 Kilometers: 27023
 VIN: ADDT6700000008652
 Engine: FE6212731B
 Color: Red



111
2010 FJW256EC Hino 4x4 Fire Pump Truck
 Kilometers: 36818
 VIN: AHHGT1JKPXX12007
 Engine: J08CUL11497
 Color: Red



112
2009 Isuzu 300 4x4 Fire Truck
 Paper Scrapped, Non Runner
 VIN: ADMNP75LS8G507139
 Engine: 4HK1747183
 Color: Red



113
2018 Dynapac CA255 Smooth Drum Roller



114
2018 Dynapac CA255 Smooth Drum Roller
 Serial No.: 10200154AJE005188



115
2015 NN86075 JCB VM115 Vibromax Smooth Drum Roller
 Kilometers: 1245
 VIN: PUNVM115C02034443
 Engine: H00089132



116
2013 Caterpillar CS533E Smooth Drum Roller
 Hours: 1598
 VIN: CATCS533ATJL03777



117
2008 Bomag BW213DH-4 Roller
 Hours: 5143
 Serial No.: 101583161072



118
2010 Hamm 3520 Pad Foot Roller
 Hours: 5926
 Serial No.: H1761303



119
2010 Caterpillar CP533E Pad Foot Roller
 Hours: 4713
 VIN: CATCP533HTLH00112



120
2018 Case 752 10Ton Tandem Roller



121
2015 Komatsu WA480-6 Wheel Loader
 Hours: 16466
 VIN: KMTWA098LEA091388



122
2014 Caterpillar 938K Wheel Loader
 Hours: 9877
 VIN: CATO938K0XXTO0485



123
2013 CXK644L SEM 668C Wheel Loader
 Hours: 8701
 VIN: Y1207006AH1207001
 Engine: C9126003356



124
2014 Feeler FD50-TA 5Ton Forklift
 Hours: 47
 Serial No.: 730016



125
2001 Still R70-40 Forklift
 Hours: 10215
 Serial No.: 517049103272



126
2016 DKZ929L FAW 28.280FD 10m³ 6x4 Tipper
 Kilometers: 47380
 VIN: AAK2828FDEB091595
 Engine: WD615501514E003882
 Color: White





The auctioneers are not responsible for any errors or discrepancies in descriptions. All goods sold as-is – no duty to repair. Odometers & hour readings not verified. E&OE.

127 **2016 DKZ917L FAW 28.280 10m³ 6x4 Tipper**
Hours: 3946
Kilometers: 45383
VIN: AAK2828FDEB091617
Engine: WD615501514H007010
Color: White



128 **2016 DKZ927L FAW 28.280FD 10m³ 6x4 Tipper**
Hours: 4131
Kilometers: 49190
VIN: AAK2828FDEB091590
Engine: WD615501514E003900
Color: White



129 **2016 DKZ920L FAW 28.280 10m³ 6x4 Tipper**
Hours: 3463
VIN: AAK2828FDEB091600
Engine: WD615501514E003885
Color: White



130 **2009 FGM985EC Mercedes Benz 3335 10m³ Tipper**
Kilometers: 271690
VIN: WDB9421626L417966
Engine: 45795600167679
Color: White
Asset No.: U3372



131 **2011 BH84KLG Mercedes Benz Axor 3335 12m³ Tipper**
Kilometers: 173530
VIN: WDB9421626L532206
Engine: 45795600203753
Color: White/Blue
Asset No.: TIP051



132 **2015 DS43MBGP Powerstar 2628VX 10m³ Tipper**
Kilometers: 69540
Hours: 5078
VIN: LBZF46GB3EA005215
Engine: 1614F100280
Color: White



133 **2014 DK43XLGP Powerstar 2628VX 10m³ Tipper**
Hours: 4797
Kilometers: 34144
VIN: LBZF46GB2DA004538
Engine: 1613C037298
Color: White



134 **2014 DK43WBG Powerstar 2628VX 10m³ Tipper**
Hours: 4707
Kilometers: 56395
VIN: LBZF46GBXDA004559
Engine: 1613D070734
Color: White



135 **2004 NRB85712 MAN 26.280 10m³ Tipper Truck**
Kilometers: 244910
VIN: AAML960273PX11286
Engine: 155058451152C1
Color: White



136 **2014 HFR007EC Hino 500 1324 6m³ Tipper Truck**
Kilometers: 137418
VIN: AHHFG1JGPXXX13330
Engine: J08CTW19201
Color: White
Asset No.: U3237



137 **2013 CP90GBGP Isuzu FTR850 Tipper**
Kilometers: 345405
VIN: ADMFTR34K8G631074
Engine: 6HK1637516
Color: White



138 **2007 HVL638EC MAN TGA 32-350 8x4 8m³ Mixer**
Kilometers: 318480
VIN: WMAH49ZZ47M478151
Engine: 50515802621582
Color: White



139 **2009 HRS501EC Mitsubishi Fuso FV26-310 6m³ Mixer**
Kilometers: 282863
VIN: ABJFV517J8EY00605
Engine: 6D24419297
Color: White



140 **2008 HMN650EC Mitsubishi Fuso FV26-310 6m³ Mixer**
Kilometers: 369958
VIN: ABJFV517J7EY00335
Color: White



141 **2007 HTV469EC MAN CLA 26-280 6m³ Mixer**
Kilometers: 42412
VIN: AAML960823PX16212
Engine: 15513555341354
Color: White



142 **2013 CF180384 Mitsubishi Fuso FN25-270 Refrigerated Truck**
Kilometers: 278500
VIN: ABJFN61FRDEY00543
Color: White



143 **2010 HKN775NW Mercedes Benz Axor 2528 6x2 Tautliner with Trailing Axle**
Kilometers: 458441
VIN: WDB9506056L303723
Engine: 90692100720461
Color: Green



144 **2008 XDY710GP Mercedes Benz 2528 6x2 Drop Side**
Kilometers: 342290
VIN: WDB9506056L295970
Engine: 90692100713730
Color: White





The auctioneers are not responsible for any errors or discrepancies in descriptions. All goods sold as-is – no duty to repair. Odometers & hour readings not verified. E&OE.

145
2008 NUF27837 Hino 500 15-257 Drop Side
 Kilometers: 509051
 VIN: AHHFG1JPPXX17598
 Color: White



146
2007 VZX239GP Hino 15-258 Flat Deck
 Kilometers: 214910
 VIN: AHHFG1JPP00016232
 Engine: J08CTT26570
 Color: White



147
2008 CA898954 Tata Novus 3439 Drop Side
 Hours: 3380
 Kilometers: 10525
 VIN: KL3K5MVF15K000072
 Engine: DV15TIS501566XA
 Asset No.: PY24



148
2007 DB58TMGP TATA 1518 Drop Side
 Kilometers: 220528
 VIN: MAT45002067R38253
 Engine: B591802060G62493959
 Color: White



149
1994 BD42GFGP Mercedes Benz 1214 Crane Truck
 With Cab Mounted Palfinger Crane
 Kilometers: 434758
 VIN: 39730262992800
 Engine: MJ01033SA082687Y
 Color: White



150
2003 HMY881MP Mercedes Benz Axor 4x2 Horse
 Kilometers: 888850
 VIN: WDB9440322K861060
 Engine: 45793700057710
 Color: White



151
2006 NU10368 Mercedes Benz 3348 V8 Actros Horse
 Kilometers: 644161
 VIN: WDB9341616L020800
 Engine: 54292100396776
 Color: White



152
2013 CJ12HRGP Ford Ranger 2.2 XLS S/Cab 6Speed
 Kilometers: 204830
 VIN: AFANXXMJ2NDU88095
 Engine: QJ2KNDU88095
 Color: White



153
2011 BR04SKGP Volkswagen Touareg 3.0TDI V6 A/T Blu SUV
 Kilometers: 186062
 VIN: WVZZZ7PZCD006398
 Engine: CRC006623
 Color: Silver



154
2017 FP97SWGP Tata Super Ace Drop Side
 Kilometers: 32068
 VIN: MAT483131GYR03414
 Engine: 475IDT18BTYS19693
 Color: White



155
2015 DM57PMGP Nissan NP200 1.5DCi
 Kilometers: 182118
 VIN: ADNUSN365U0092004
 Engine: K9KM890D005123
 Color: White



156
2014 CEM37046 GWM Steed 2.5TCi Double Cab
 Kilometers: 91171
 VIN: LGWCBC179DC615923
 Color: Grey



157
2014 DN60BPGP Nissan Hardbody NP300 D/Cab
 Kilometers: 111550
 VIN: ADNCPGD22ZR055694
 Engine: YD25511217T
 Color: White



158
2012 JKM639MP Toyota Hilux 2.5D-4D S/Cab
 Kilometers: 404136
 VIN: AHTCS12G907592922
 Engine: 2KD5939677
 Color: White



159
2015 DFH305L Mercedes Benz ML350 CDI BlueTEC Auto
 Kilometers: 74370
 VIN: WDC1660242A506146
 Engine: 64282641639467
 Color: Silver



160
2015 CLT295NC Mercedes Benz C250d AMG Line Auto
 Kilometers: 287142
 VIN: WDD2050082R082820
 Engine: 65192132804227
 Color: Red



161
2015 DX55LJGP Mercedes Benz C250 BlueTEC Avantgarde Auto
 Kilometers: 62620
 VIN: WDD2050082R103968
 Engine: 65192132895657
 Color: White



162
2015 HSY812MP Mercedes Benz A250 Sport Auto
 Kilometers: 74560
 VIN: WDD176442J331204
 Engine: 27092030521583
 Color: Grey





The auctioneers are not responsible for any errors or discrepancies in descriptions.
All goods sold as-is – no duty to repair. Odometers & hour readings not verified. E&OE.

163	<p>2015 HB10FSGP Mercedes Benz C220d Avantgarde Auto</p> <p>Kilometers: 103921 VIN: WDD2050042R093029 Engine: 65192132859303 Color: White</p>
164	<p>2015 DR53XDGP Mercedes Benz C200 Avantgarde Auto</p> <p>**Battery needs Replacing** Kilometers: 95710 VIN: WDD2050422R039168 Engine: 27492030314469 Color: White</p>
165	<p>2015 CSD303NC Mercedes Benz C200 Avantgarde Auto</p> <p>Kilometers: 88506 VIN: WDD2050422R061776 Engine: 27492030368594 Color: Grey</p>
166	<p>2015 DL99RHGP Mercedes Benz C200 Avantgarde (Manual)</p> <p>Kilometers: 59475 VIN: WDD2050422R001897 Engine: 27492030185633 Color: White</p>
167	<p>2014 CYN679L Mercedes Benz C200 A/T Sedan</p> <p>Kilometers: 102456 VIN: WDD2040482R322744 Engine: 27186030709502 Color: Silver</p>
168	<p>2013 CL59FLGP Mercedes Benz C250 Coupe Auto</p> <p>Kilometers: 95410 VIN: WDD2043472G116136 Engine: 27186030662444 Color: Silver</p>
169	<p>2012 CD88NNGP Lexus IS250 A/T</p> <p>Kilometers: 114062 VIN: JTHBK262002102912 Engine: 4GR0813706 Color: White</p>
170	<p>CV10MKGP Mercedes Benz C250 CDi</p> <p>Kilometers: 114323 VIN: WDD2040032R309703 Engine: 65191131675940 Color: Grey</p>
171	<p>2008 XDR603GP BMW 330Ci Convertible</p> <p>Kilometers: 148297 VIN: WBAWL52080PX33316 Engine: 79194251 Color: Bronze</p>



End of Auction!

See our website for
upcoming movables
& property auctions.

www.whauctions.com